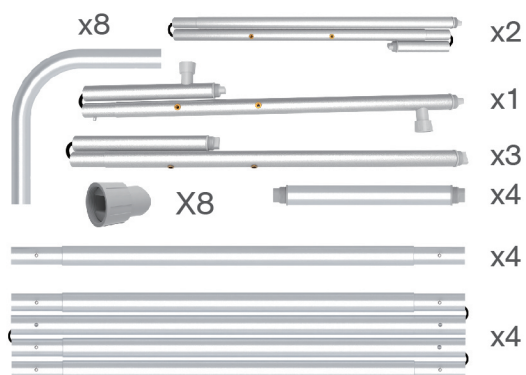


STEPS

(1) Hardware



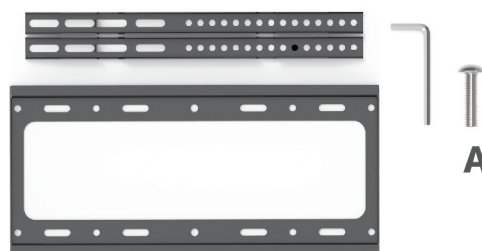
(2) Graphic printing fabric banner



(3) Shelf board with clamps

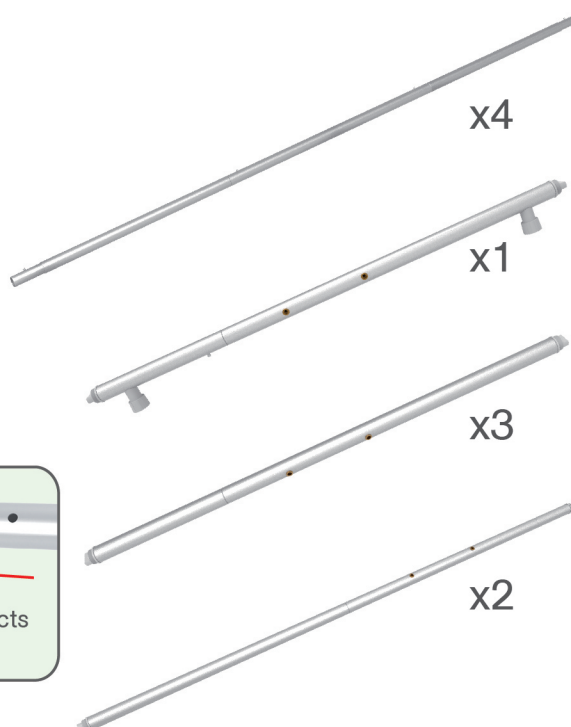
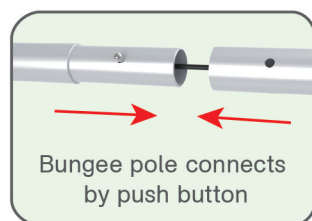
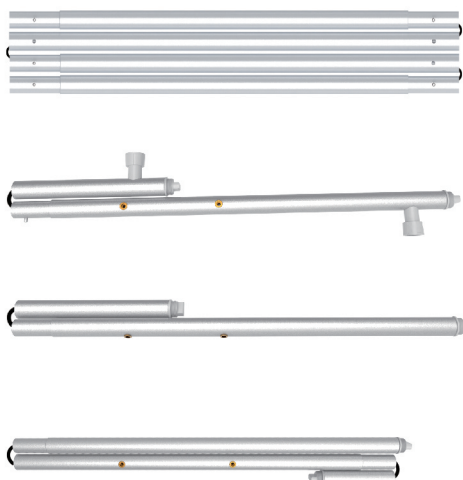


(4) TV mount with screw bag



STEP 01

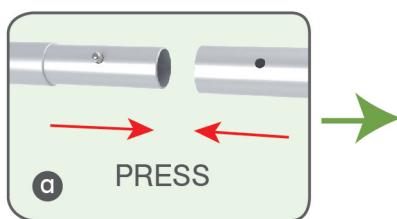
To connect the poles according to the labellings



STEPS

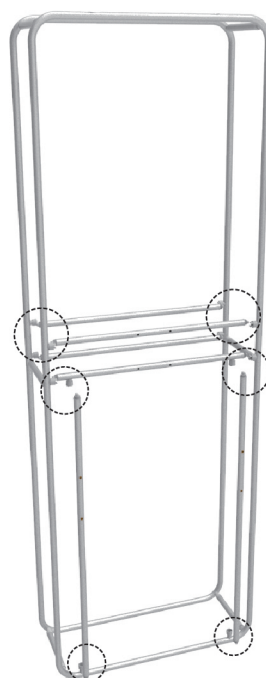
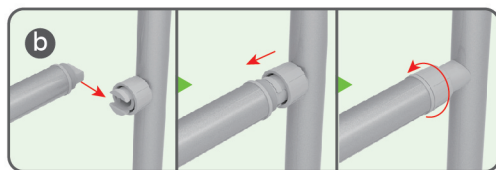
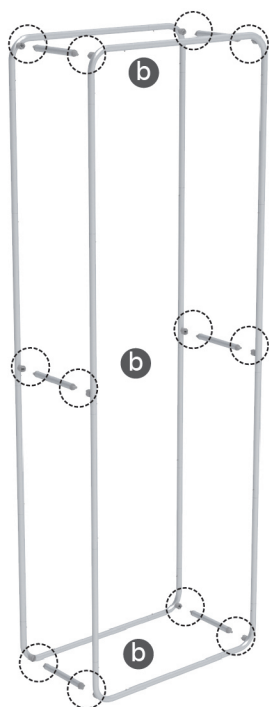
STEP 02

To connect the long poles by corner pieces according to labellings



STEP 03

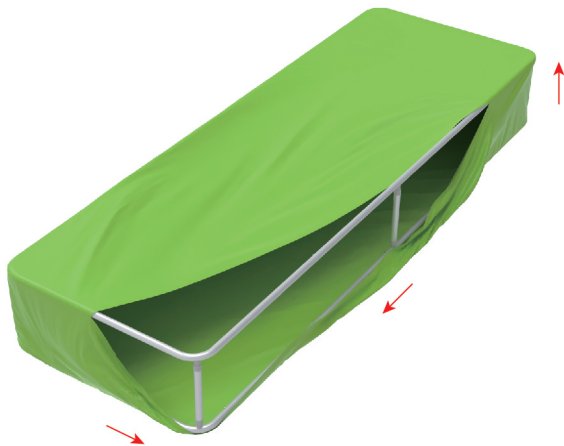
To connect the cross pole in position according to labellings



STEPS

STEP 04

To lie down the pillar and wrap the fabric from top to bottom and zip up



x4

Same steps for rest items



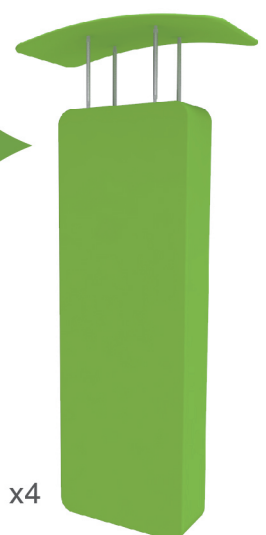
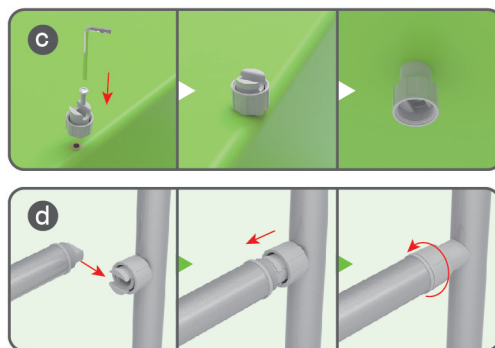
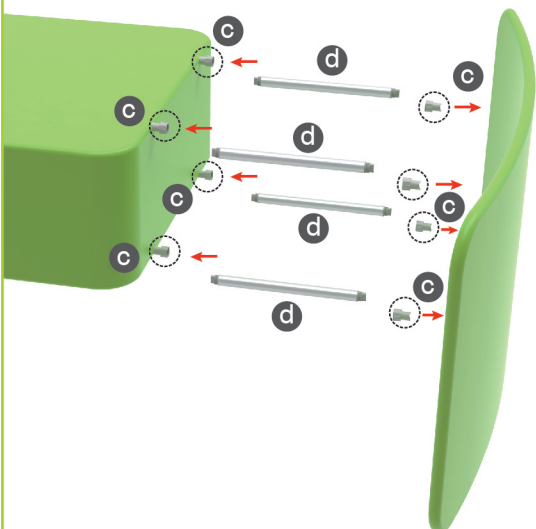
x4



x4

STEP 05

To lie down the pillar and use upright poles to assemble the roof on the top

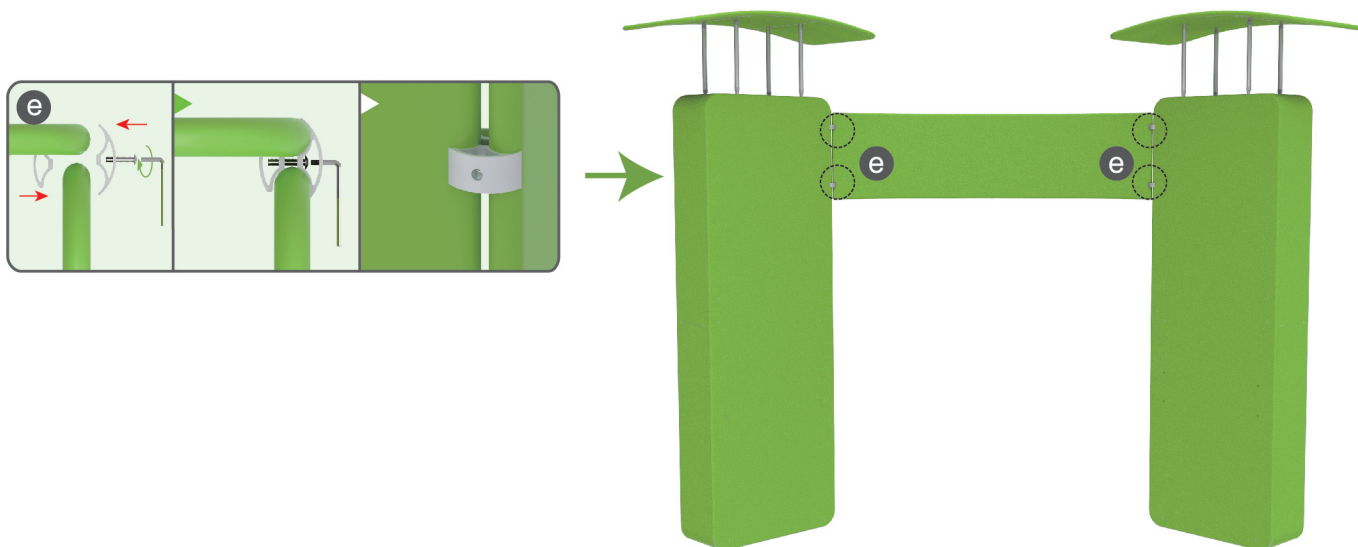


x4

STEPS

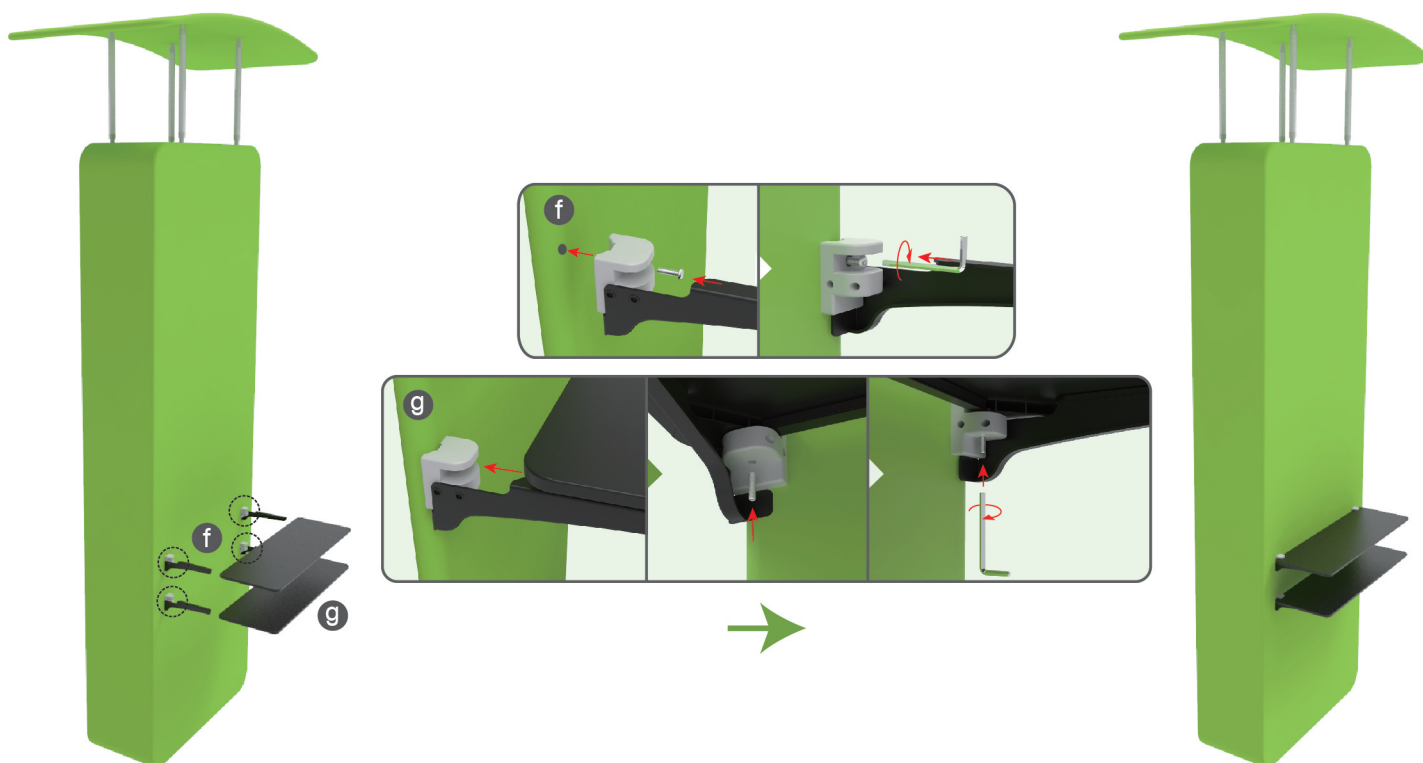
STEP 06

To use C clips to connect the curved walls with the pillar sets



STEP 07

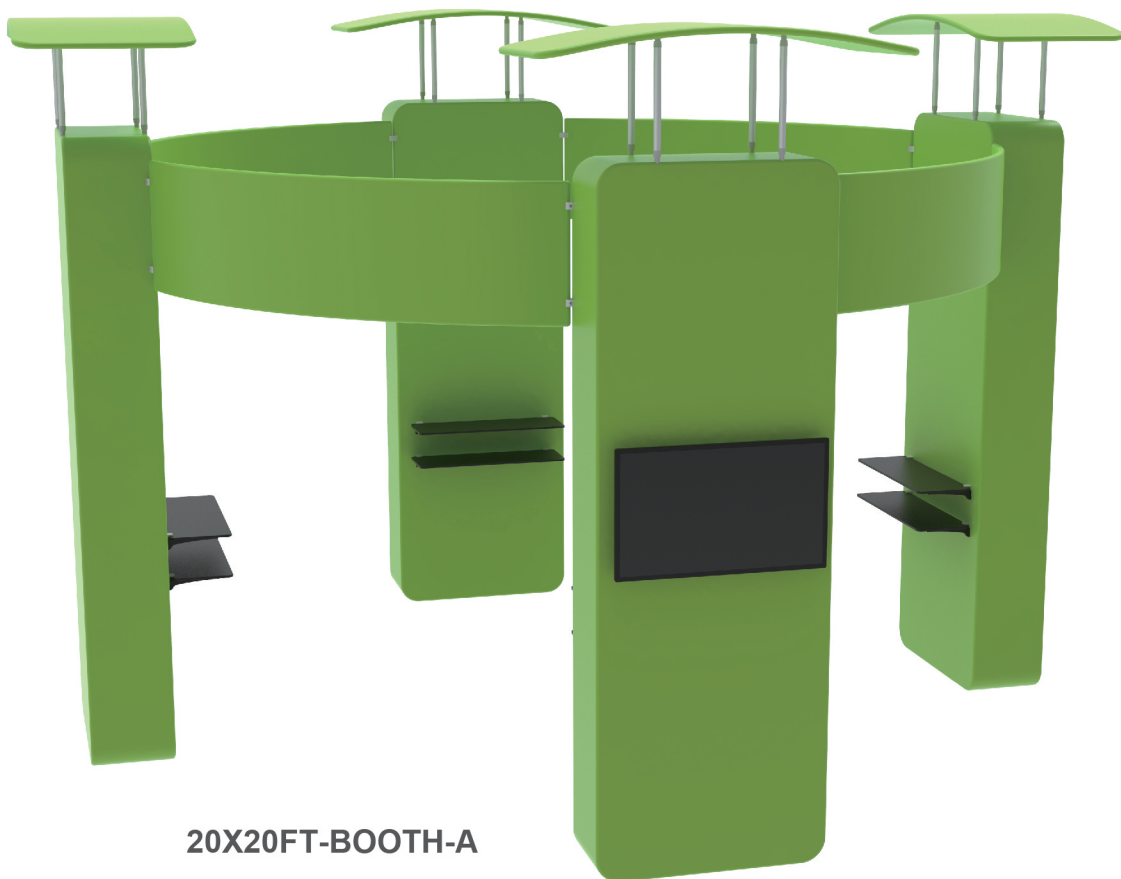
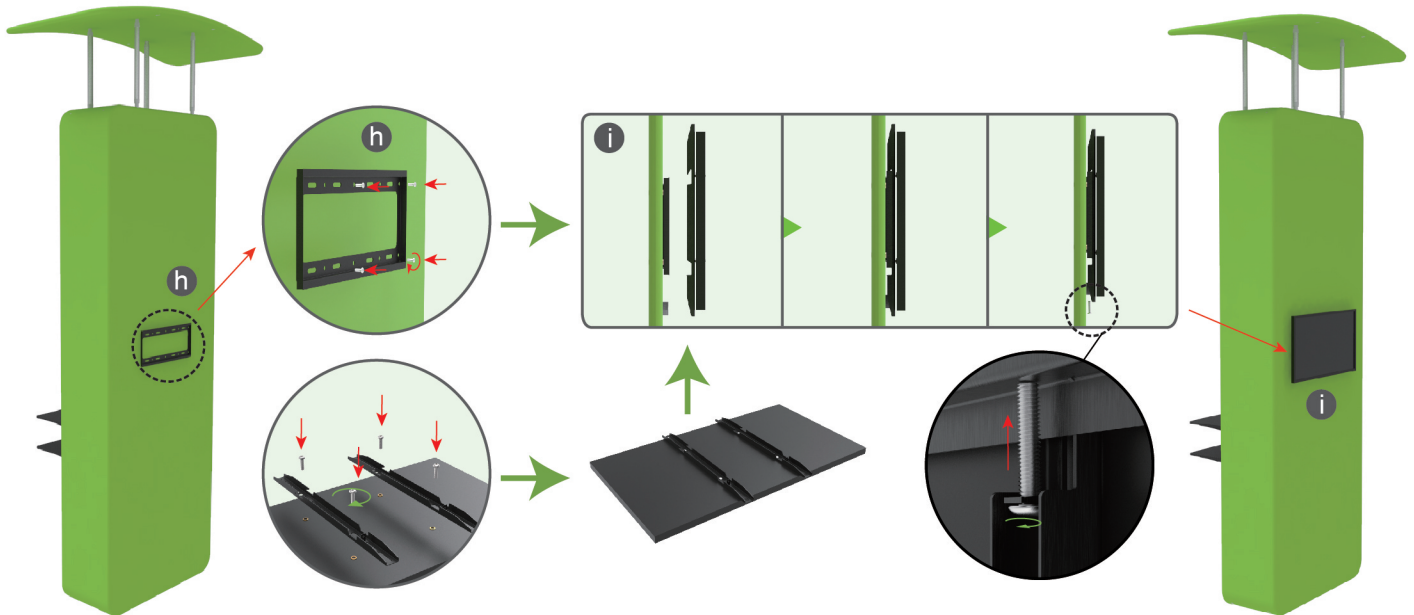
To install the shelves in position



STEPS

STEP 08

To install the TV mount in position



20X20FT-BOOTH-A