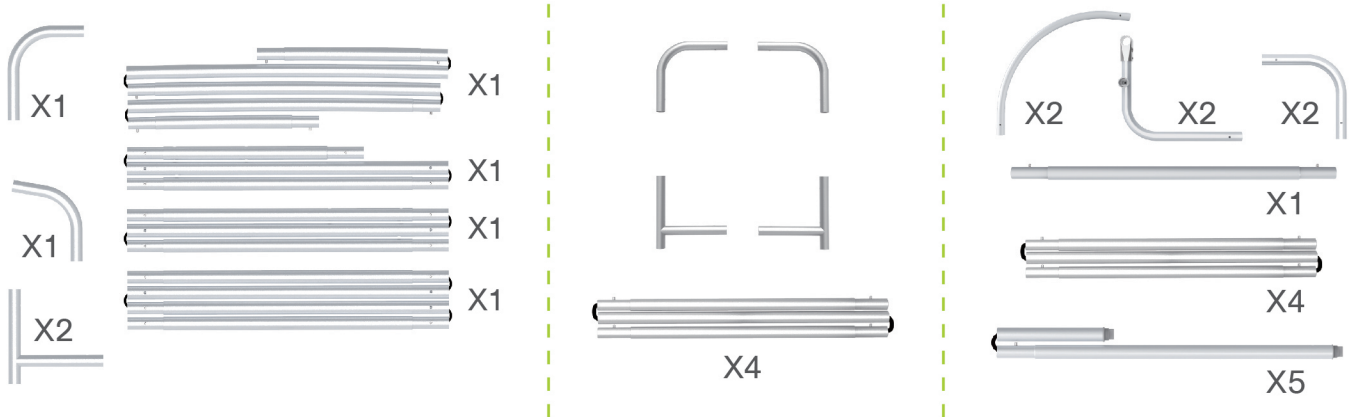
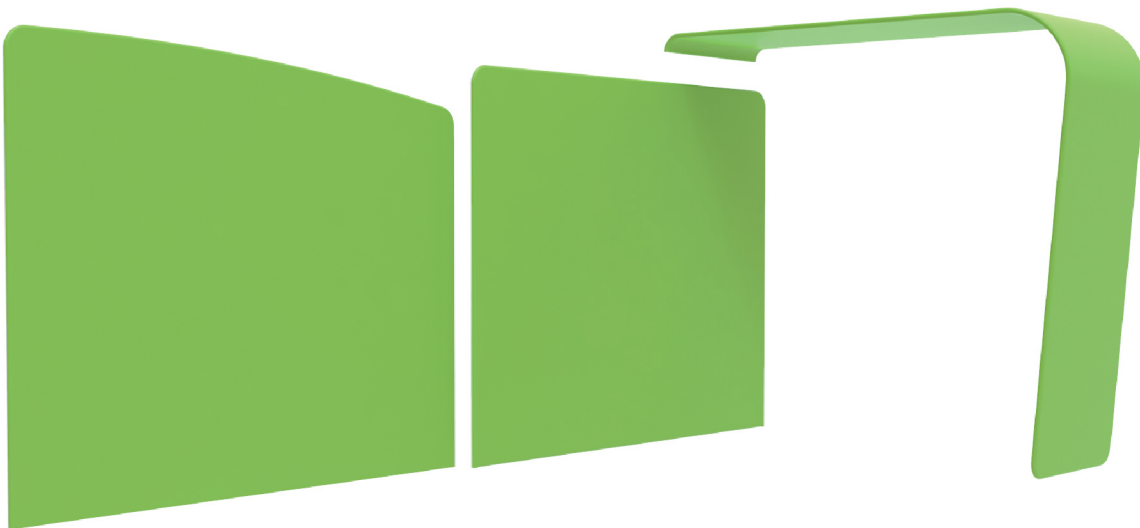


## STEPS

## (1) Hardware

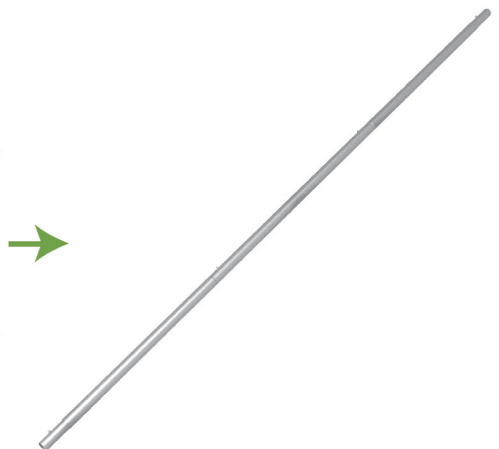
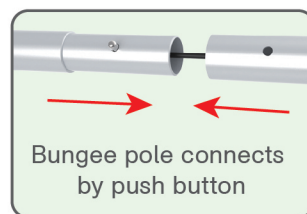


## (2) Graphic printing fabric banner



## STEP 01

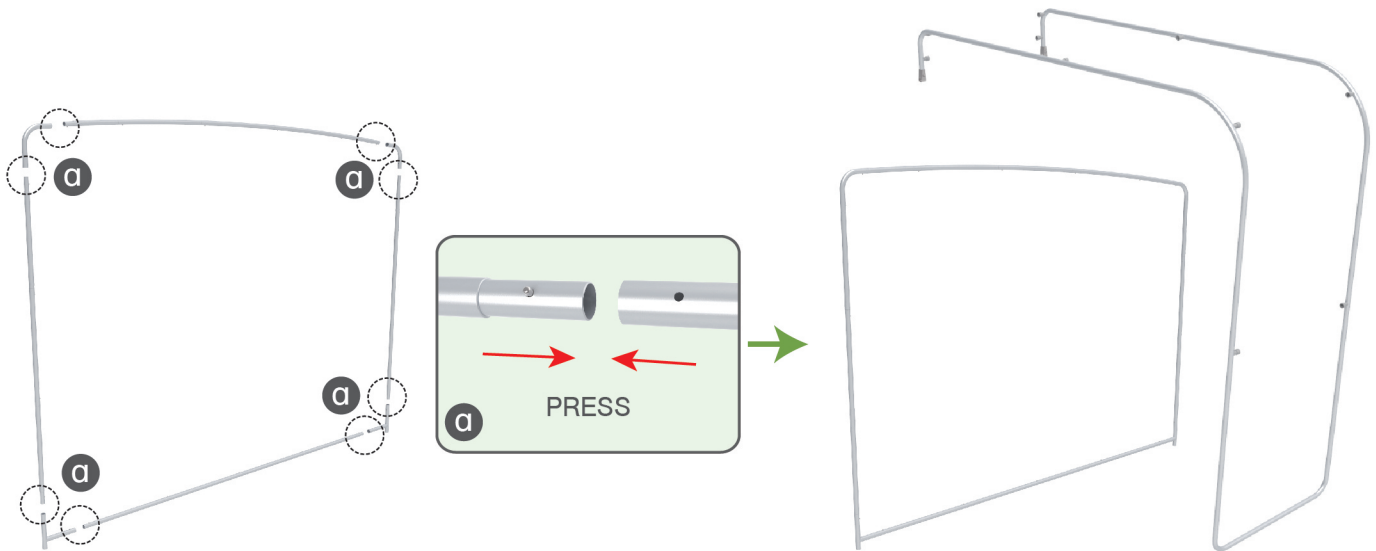
To connect the poles according to the labellings



## STEPS

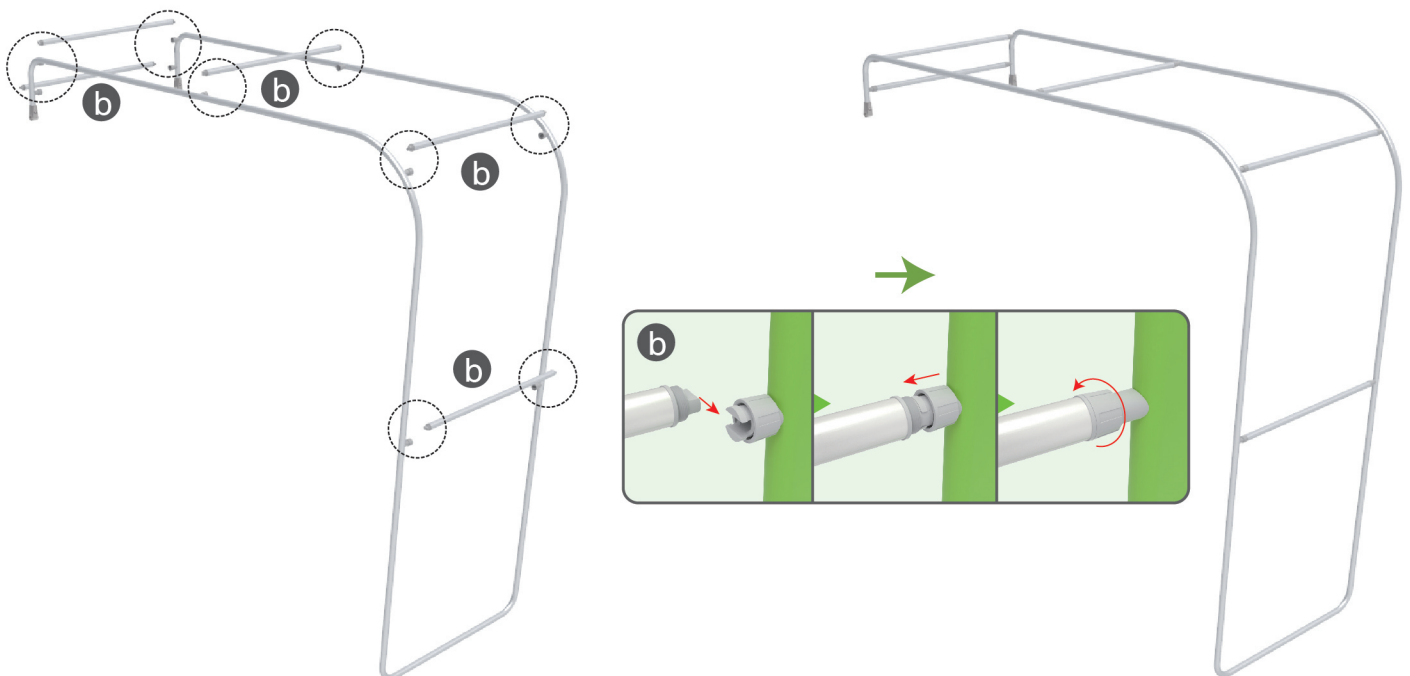
## STEP 02

To use corner pieces to connect the poles to be display stand



## STEP 03

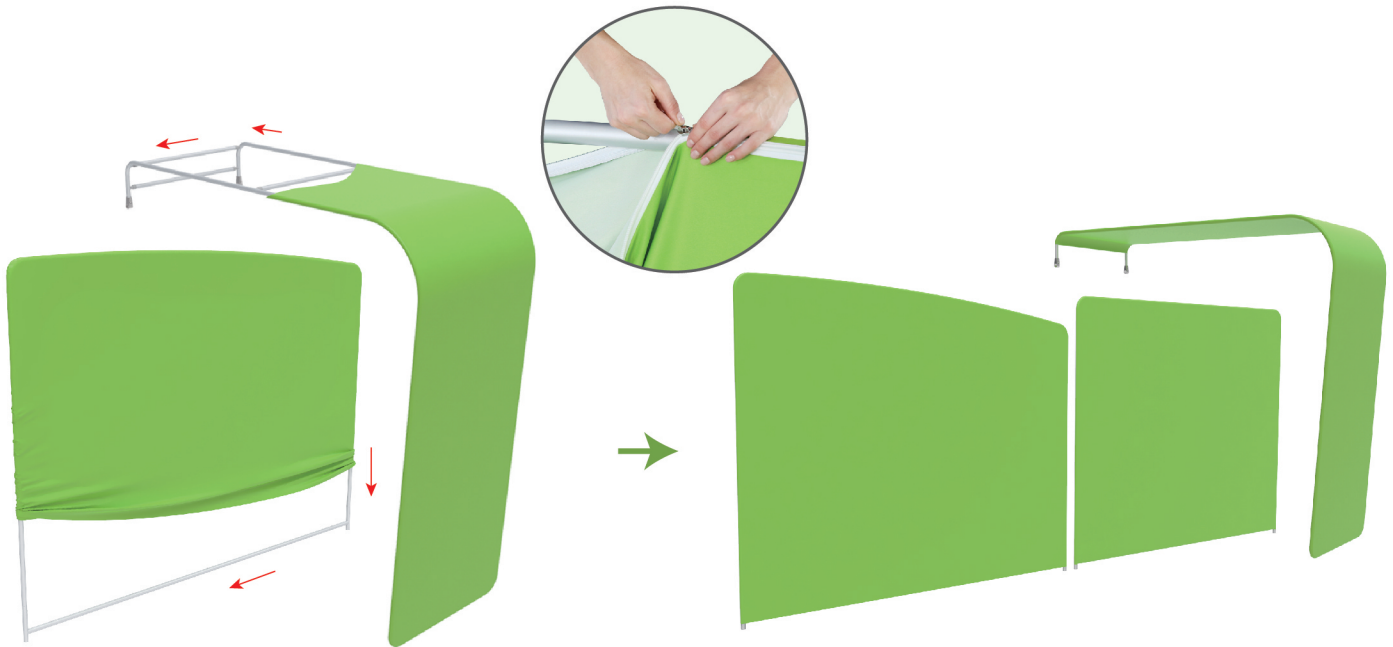
To assemble cross bar at the Arch stand according to the labellings



## STEPS

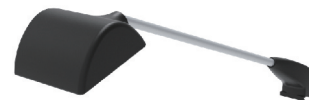
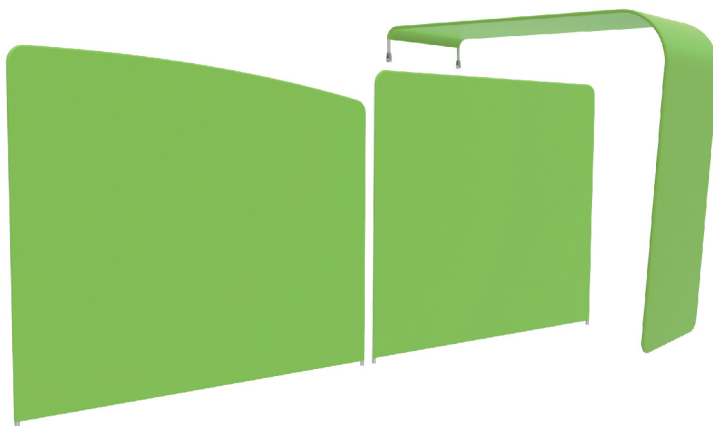
## STEP 04

To slide the fabric banner over the frame from top (bottom) and zip up at bottom (top)



### Same steps for rest back wall

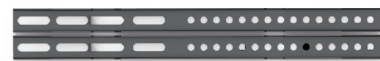
## Booth Set Assembly



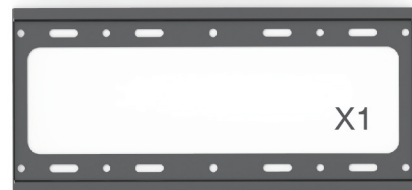
LED Light



## Light Clips



X2



X1



# A



X1



X1



X1



X1



X1

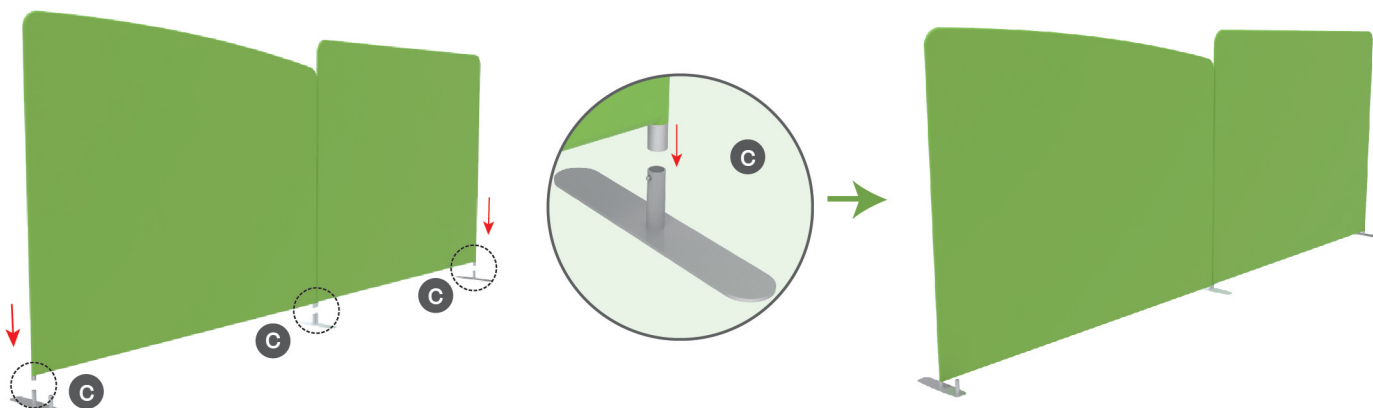
X1



## STEPS

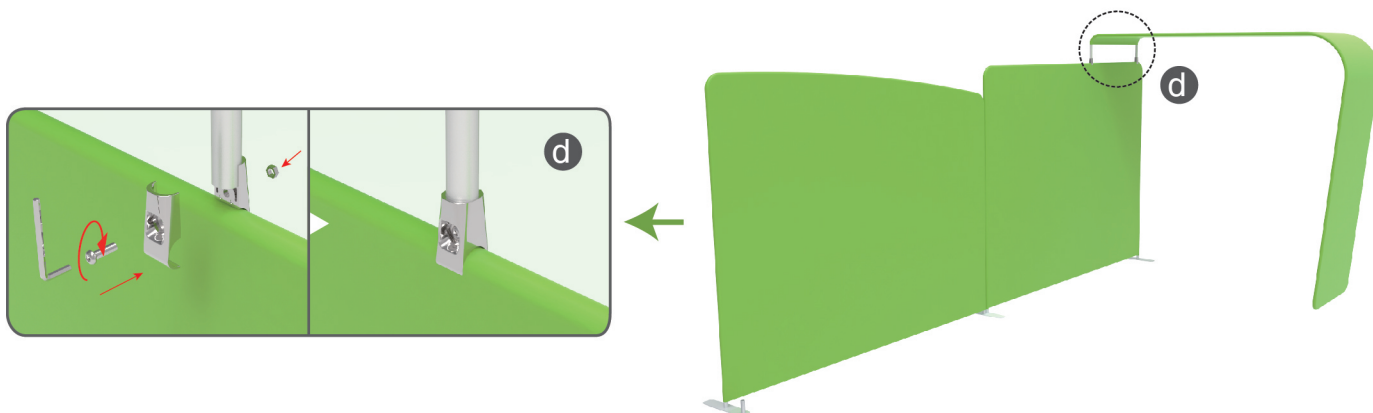
## STEP 01

To install the stand feet in position



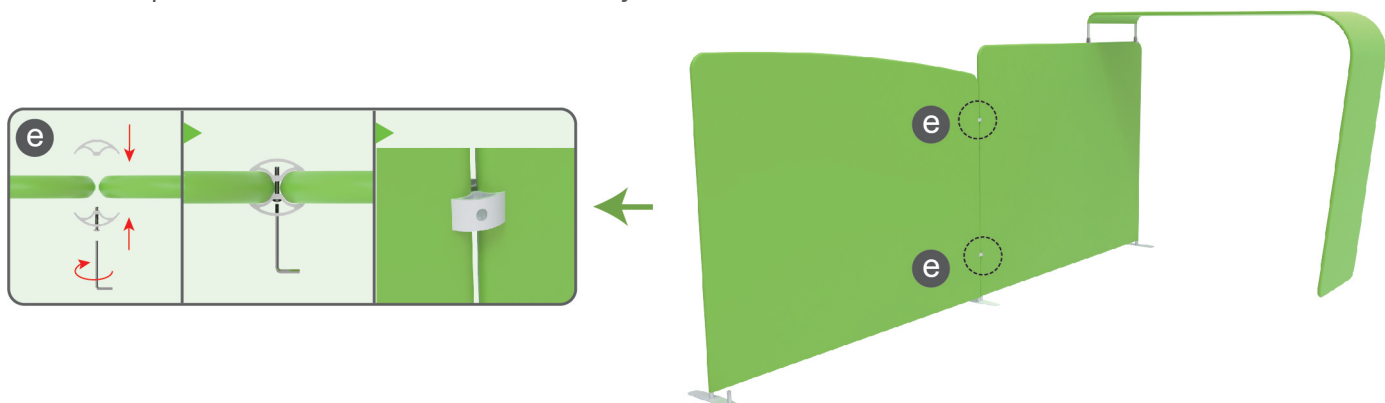
## STEP 02

To loose the screw of clamp a bit and clip the Arch stand onto the back wall then fasten it



## STEP 03

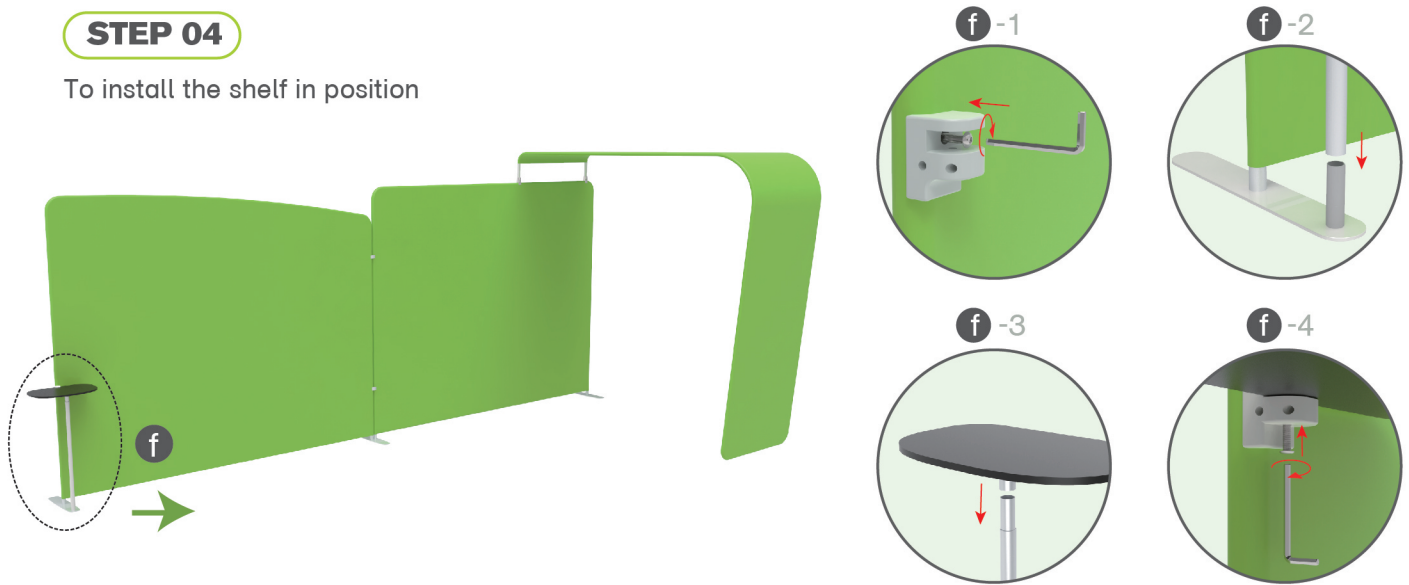
To use C clips in between the 2 walls and fasten by screw.



## STEPS

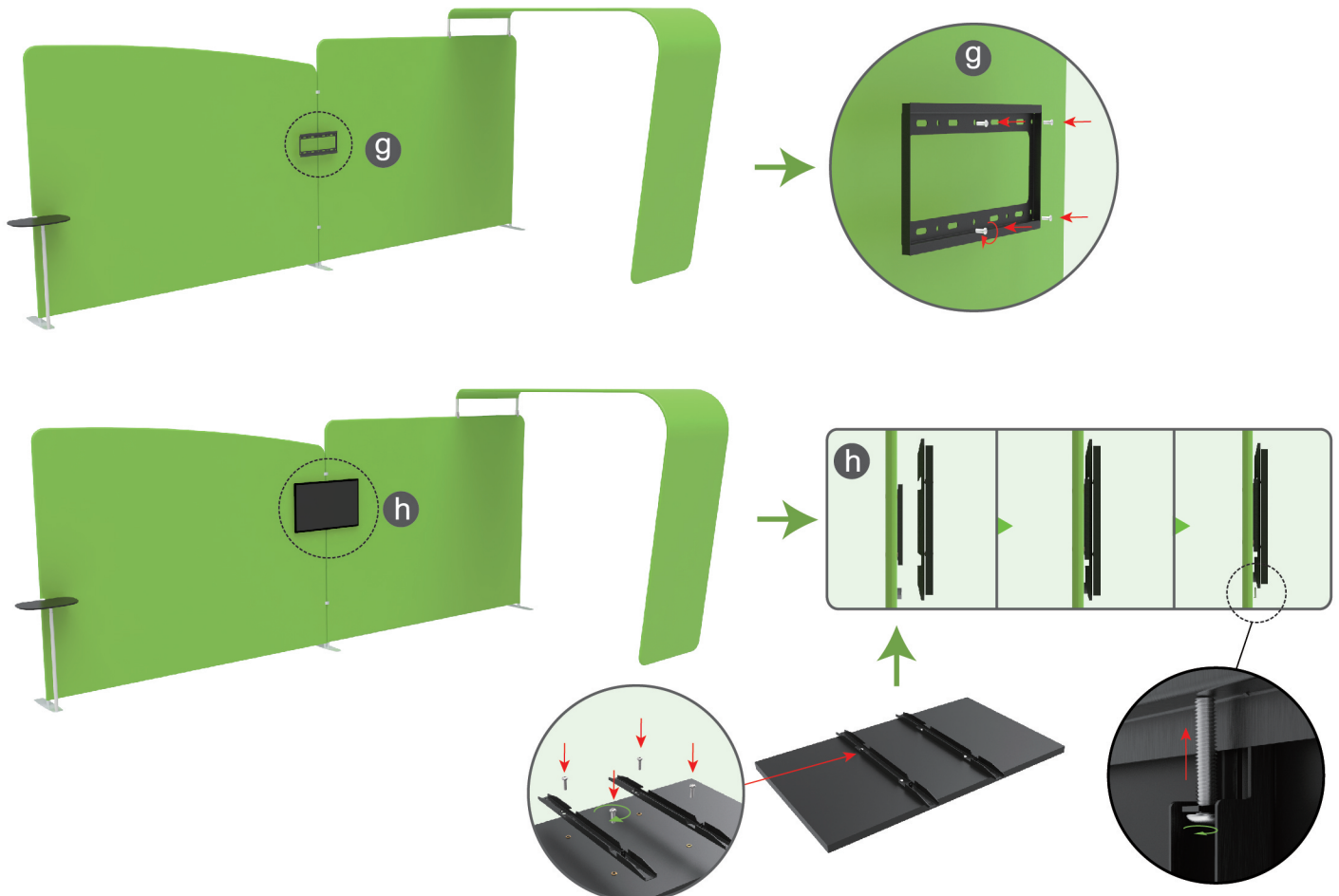
## STEP 04

To install the shelf in position



## STEP 05

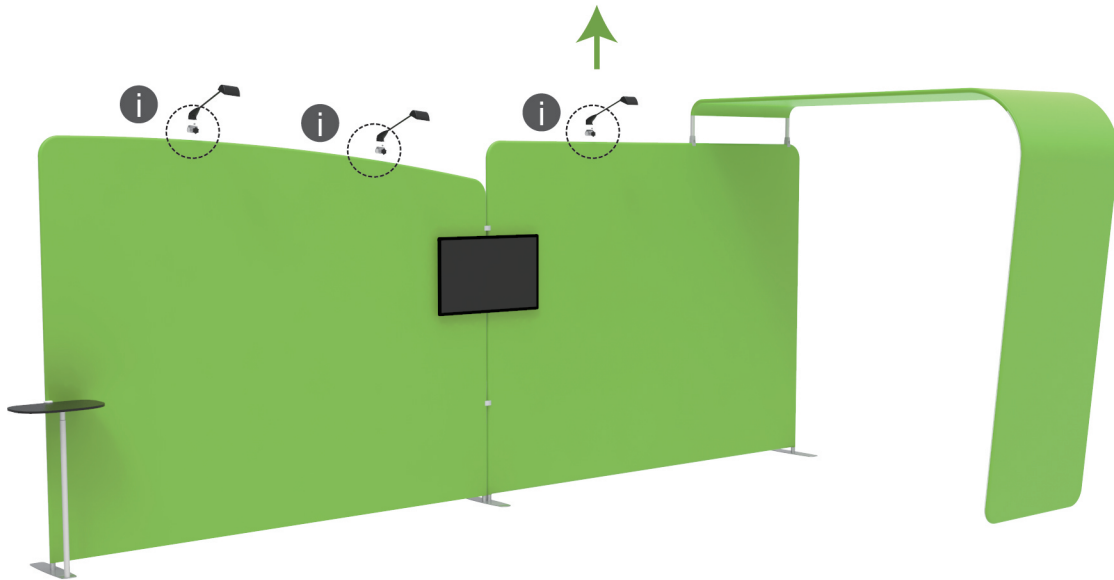
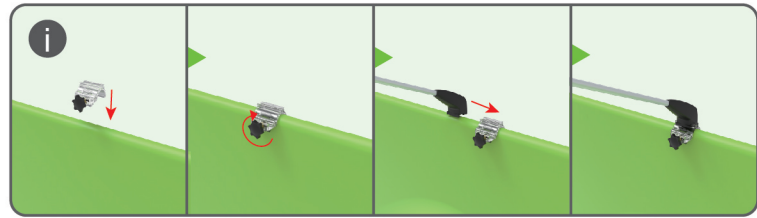
To install the TV mount in position



## STEPS

## STEP 06

Install LED light



10X20FT-BOOTH-13