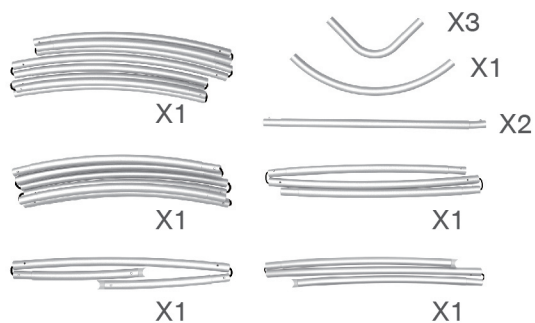


STEPS

(1) Hardware



(2) Fabric cover

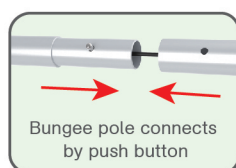


(3) Screw bag



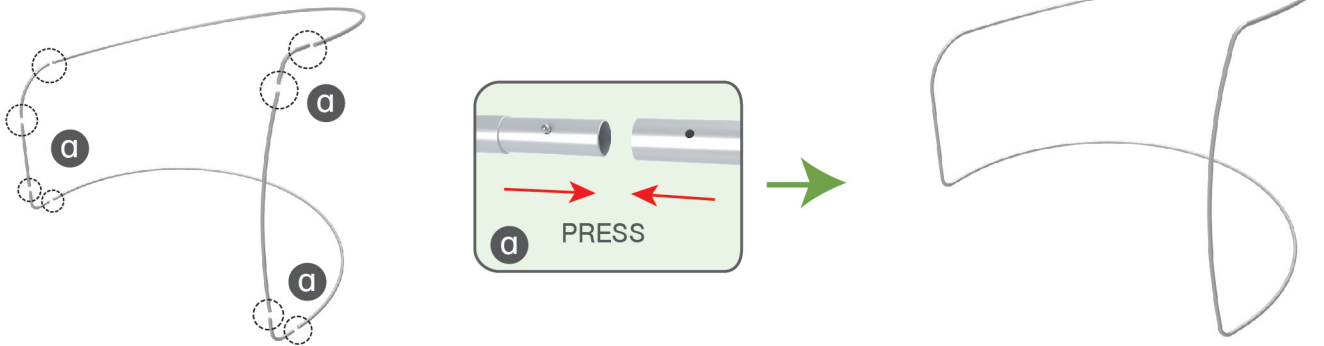
STEP 01

To connect the poles according to the labellings

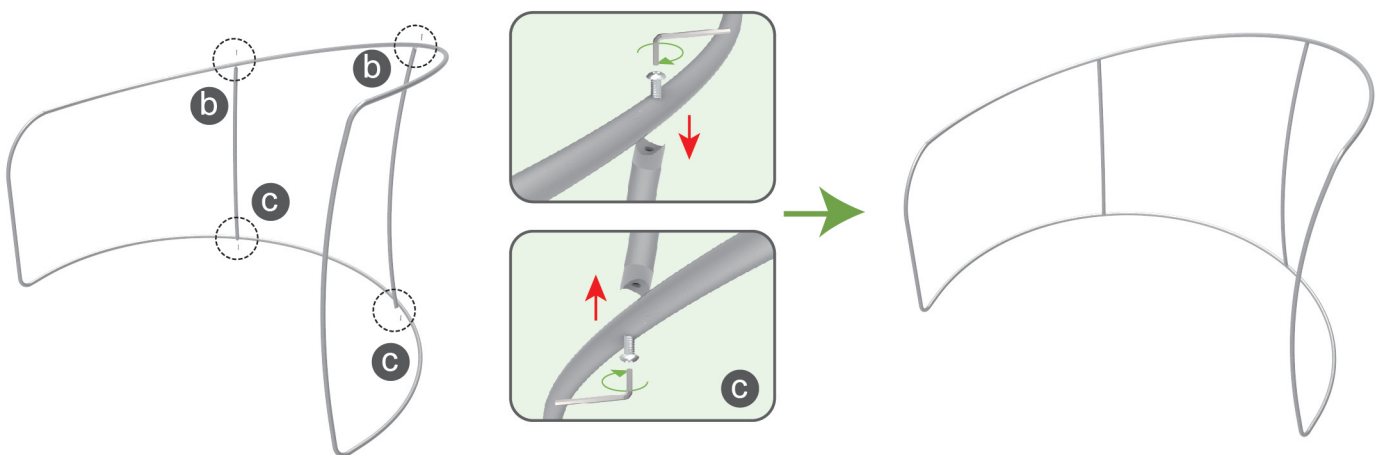


STEPS**STEP 02**

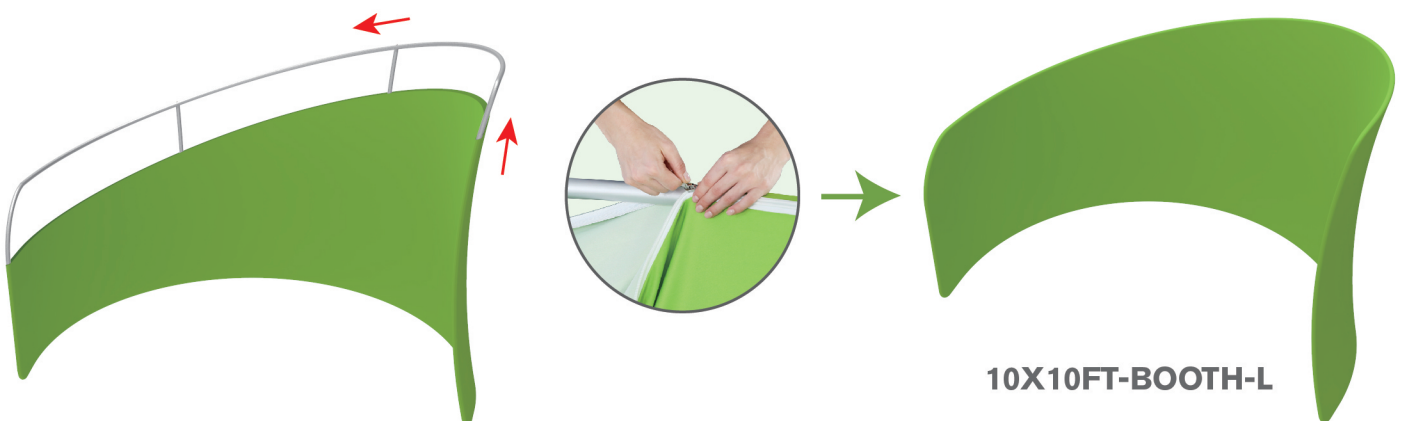
To use corner pieces to connect the poles to be display stand

**STEP 03**

To use Allen Key and follow the labellings to install the upright pole in position

**STEP 04**

To slide the fabric banner on the frame from bottom and zip up at top



STEPS

Same Assembly Steps for Following Booths



10X10FT-BOOTH-K



10X10FT-BOOTH-09