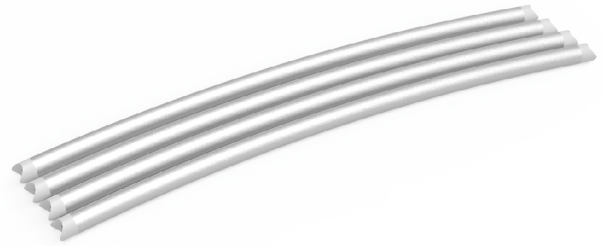


## STEPS

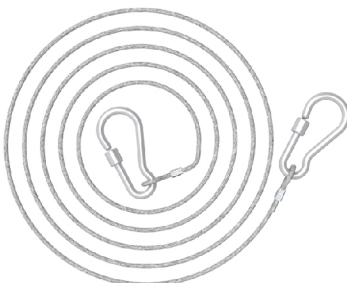
(1) Aluminum snap-tube hardware of circular blimp



(2) Aluminum snap-tube hardware of tapered circular tower



(3) Screw bags



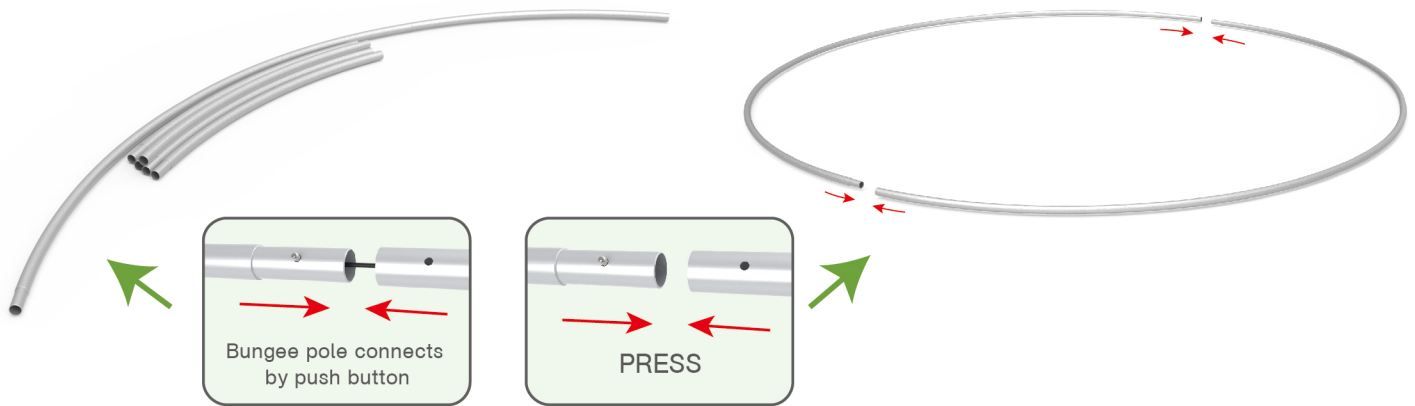
(4) 1x fabric graphic for circular blimp;  
1x fabric graphic for tapered circular tower



## STEPS

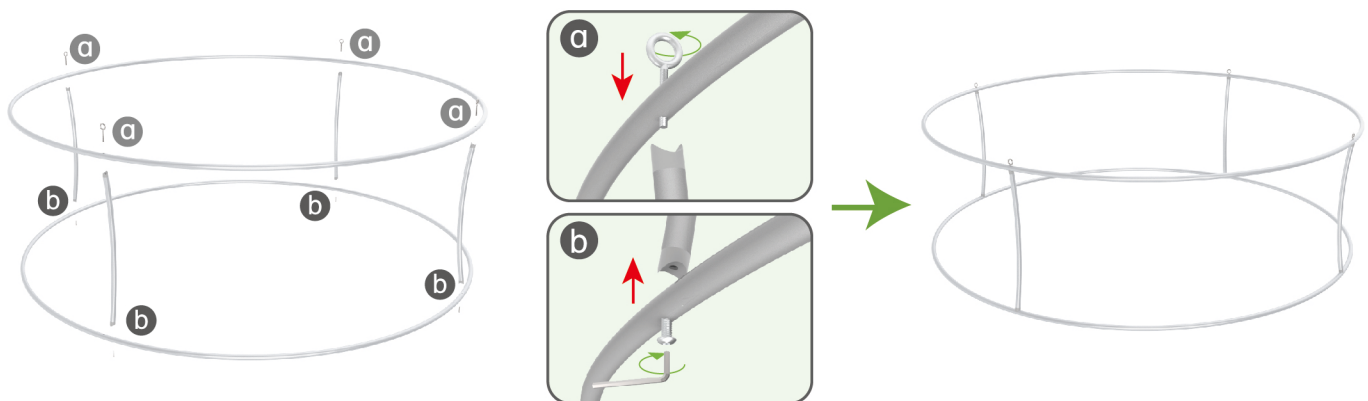
## STEP 01

To connect the poles according to the labellings then connect to be circle shape



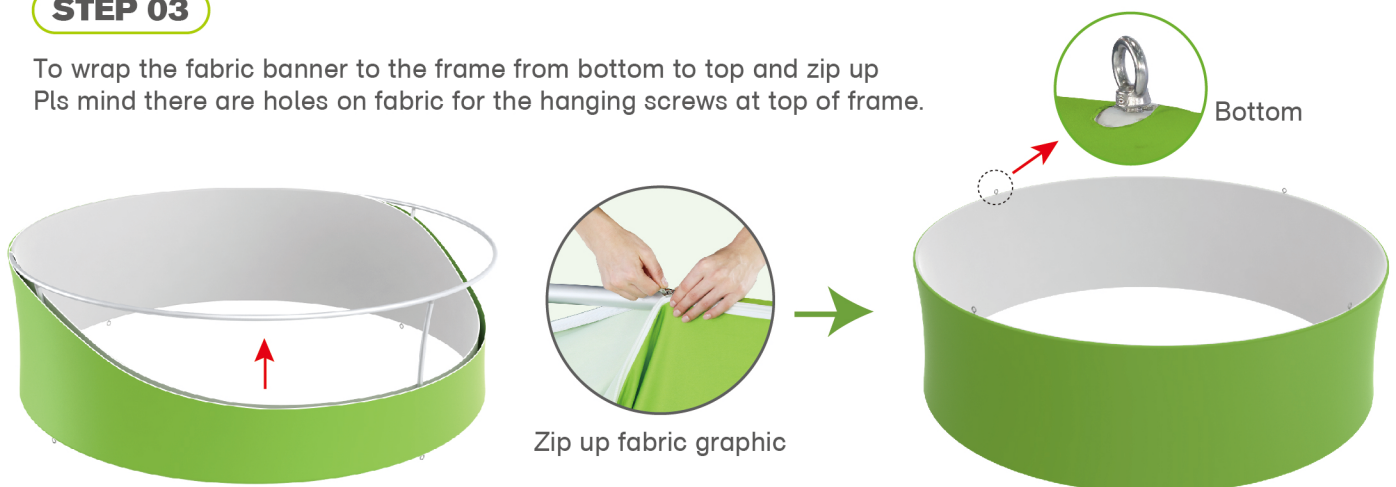
## STEP 02

To use screws to install the curved upright poles in position  
(Pls mind that screws B are using at the bottom, screws A at the top)



## STEP 03

To wrap the fabric banner to the frame from bottom to top and zip up  
Pls mind there are holes on fabric for the hanging screws at top of frame.

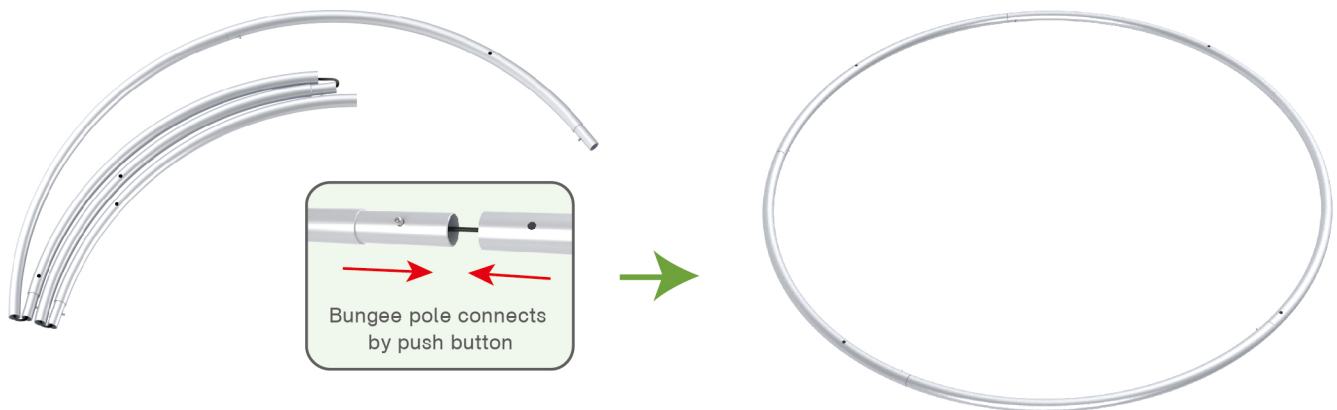


## STEPS

**STEP 04** To connect the poles according to labellings

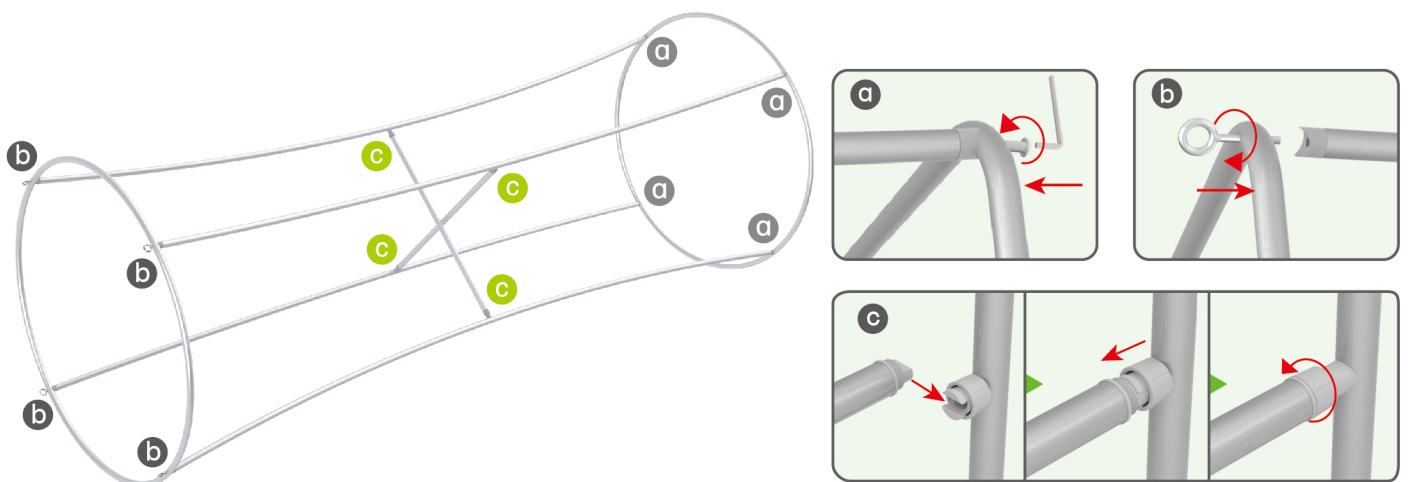


**STEP 05** To connect the snap tube to be circle shape according to labellings



**STEP 06**

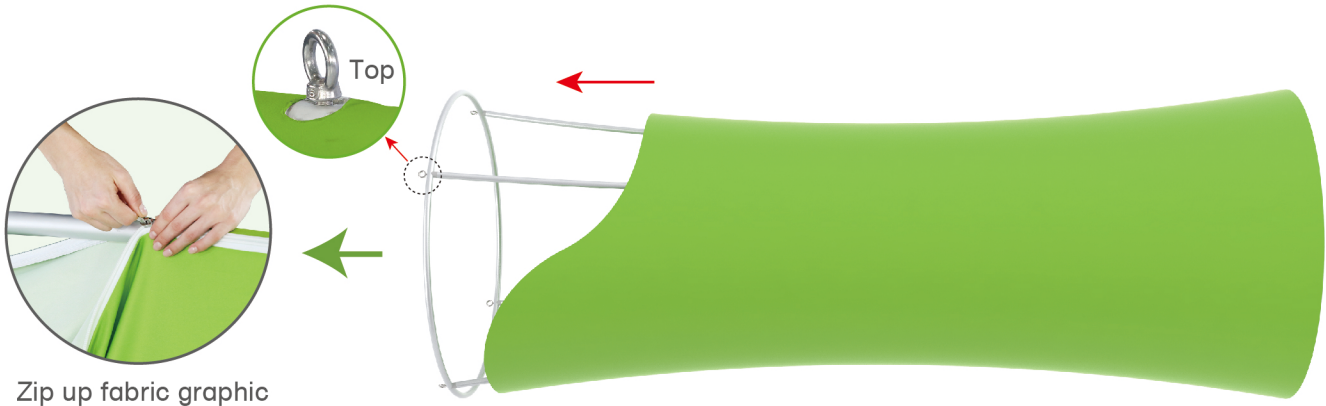
- 1) To connect the long upright pole to the corner of the circle ring.  
(screws A on the bottom, while screws B at the top )
- 2) To assemble the cross bars in the middle of tower (see image c)



## STEPS

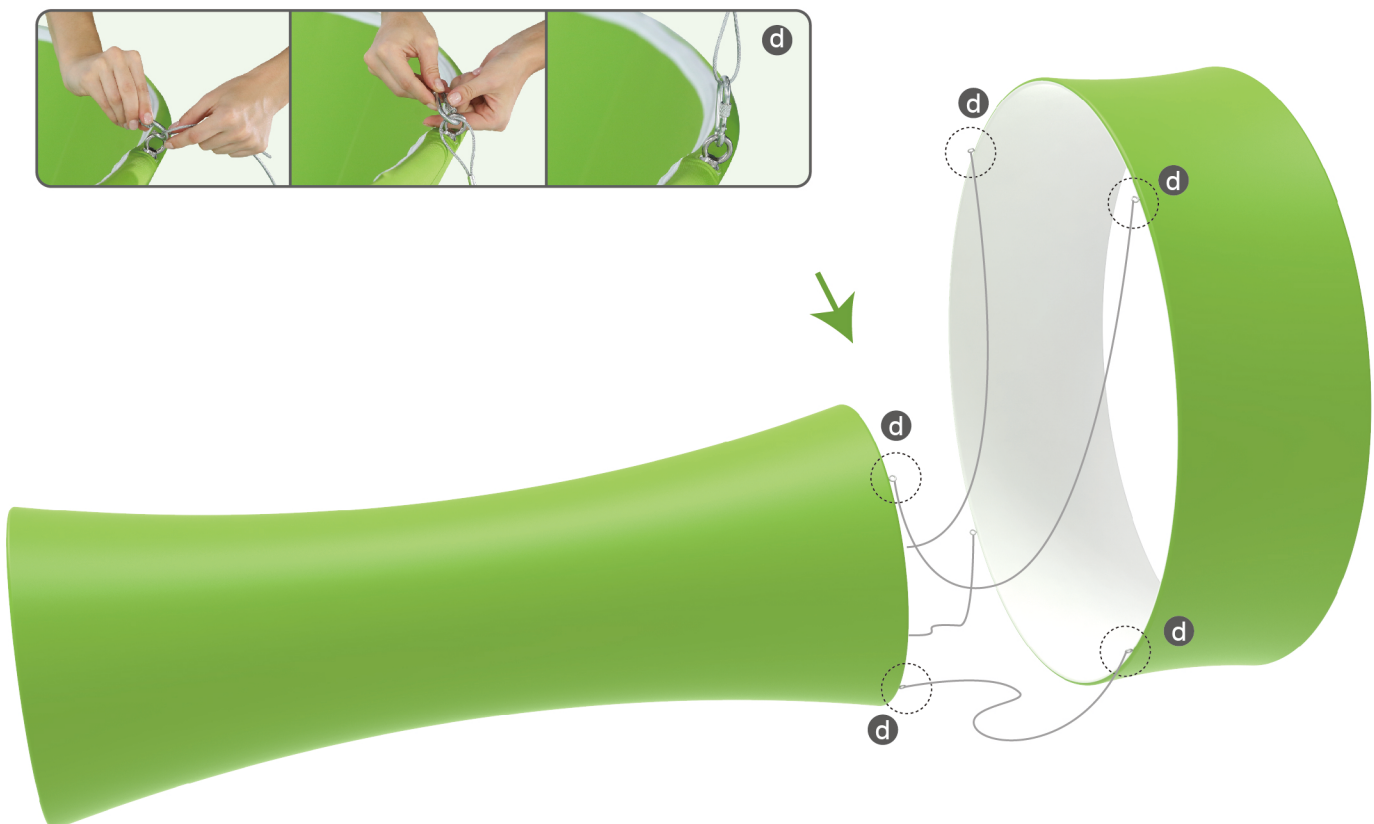
## STEP 07

To lie down the tapered circular tower and wrap up the fabric cover from bottom to top and zip up



## STEP 08

To lie down the tapered circular tower and install the circular blimp onto top of the tapered circular tower by using wires, afterwards, lift up the tapered circular tower & circular blimp at the same time.





### STEPS

