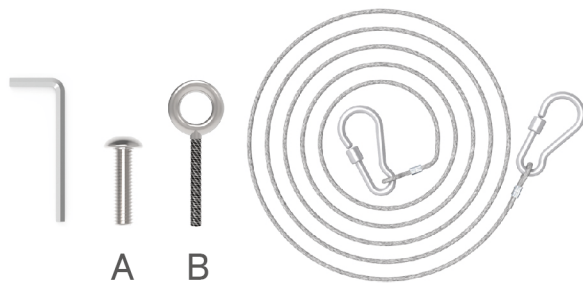
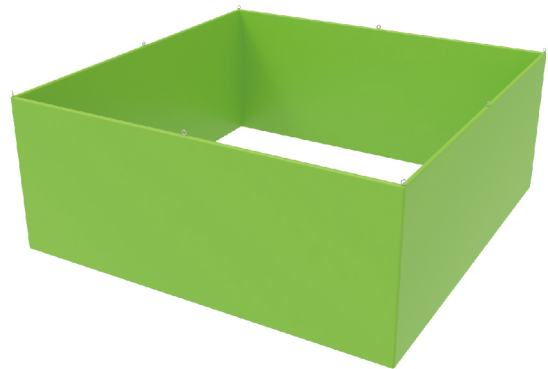


★ One Tool (Hex Wrench) **STEPS**

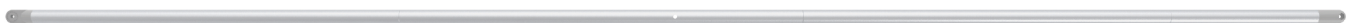
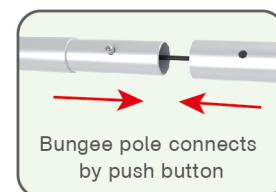
(1) Straight Long Tubes

(2) 4 Straight Corner Upright Poles
Curved Upright poles(3) wire cable with hook;
Screw A; Screw B;
Allen Key

(4) Graphic printing fabric banner x 1

**STEP 01**

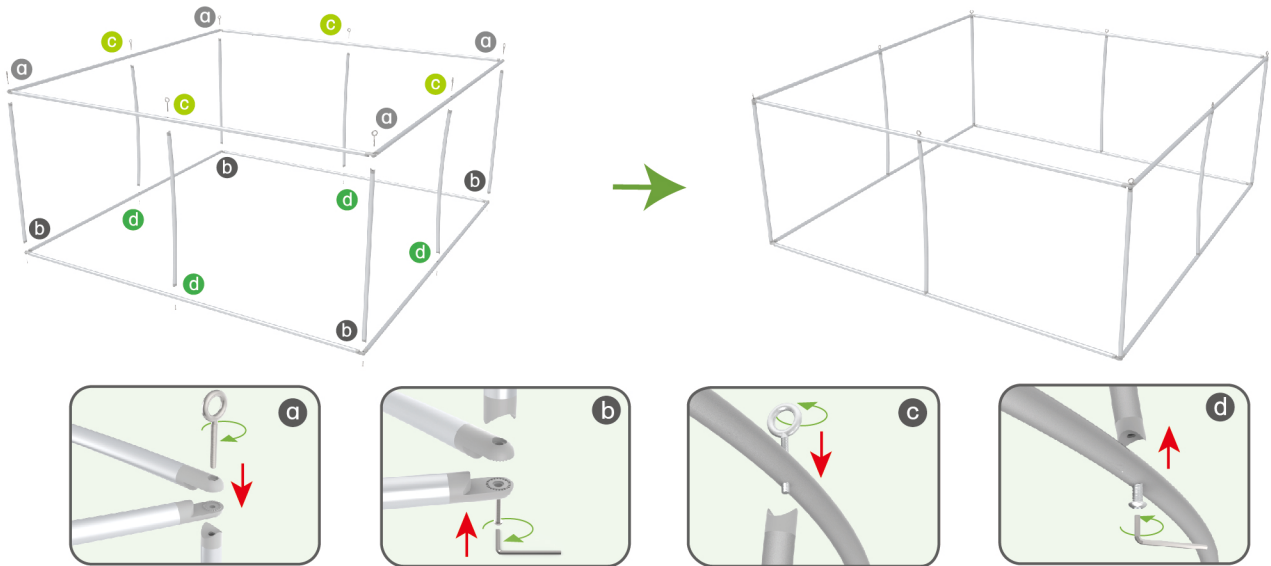
To connect the poles according to the labellings



STEPS

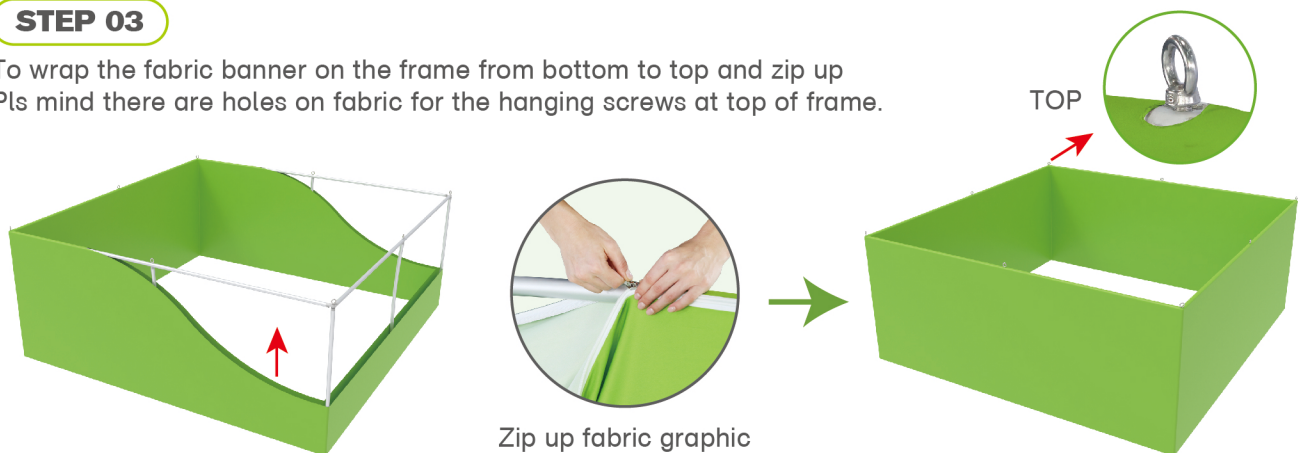
STEP 02

To connect 4 long poles to be top square and another 4 long poles to be bottom square, then use 4pcs of corner upright poles to connect top & bottom square and use screw B at top, Screw A at bottom for fastening; afterwards, to install the rest curved upright poles in position by using Screw B at top, Screw A at bottom.
 (Pls mind that screws B are using at the top, screws A at the bottom)



STEP 03

To wrap the fabric banner on the frame from bottom to top and zip up
 Pls mind there are holes on fabric for the hanging screws at top of frame.



STEP 04

To clip the wire on the hanging screws and hang up the sign.

