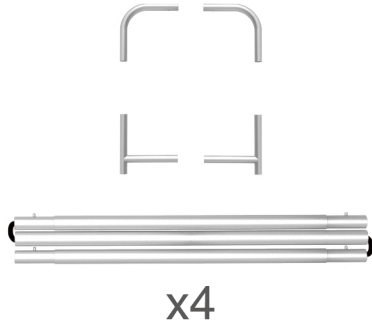


STEPS

(1) Hardware

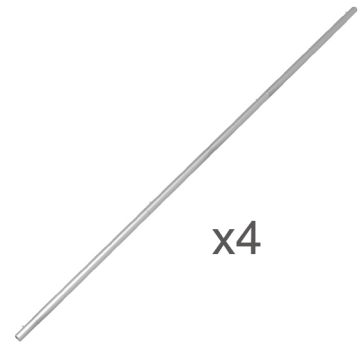
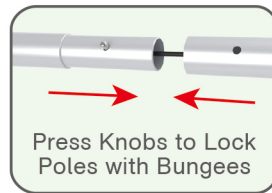
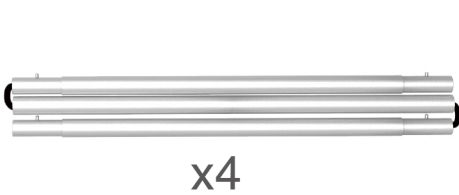


(2) Printed Graphic Fabric Banner (Optional)



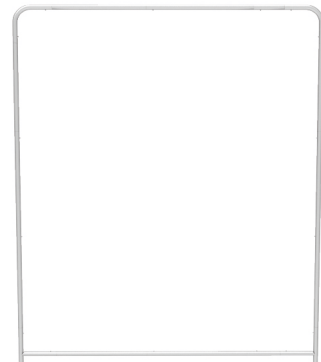
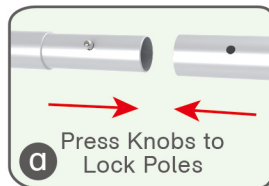
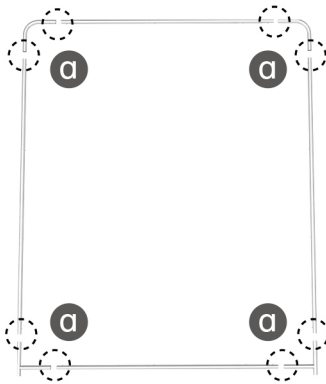
STEP 01

Connect to make long poles according to labelings.



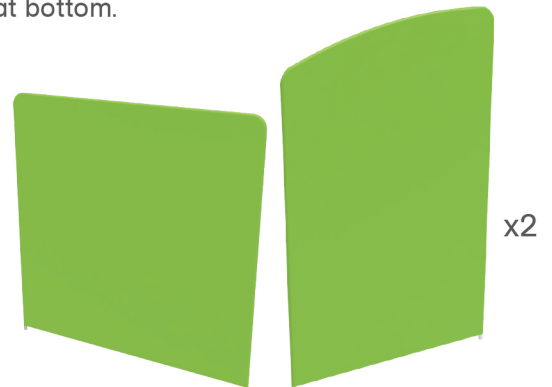
STEP 02

Connect long poles with corner poles according to labelings.



STEP 03

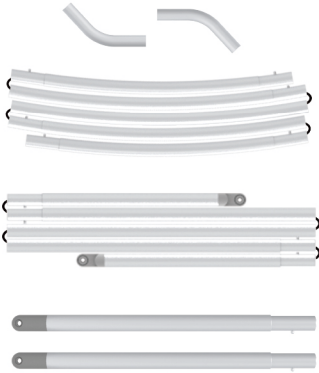
Slide fabric banner on frame from top and zip up at bottom.



Same Steps for Other Display Stands

STEPS

(1) Hardware

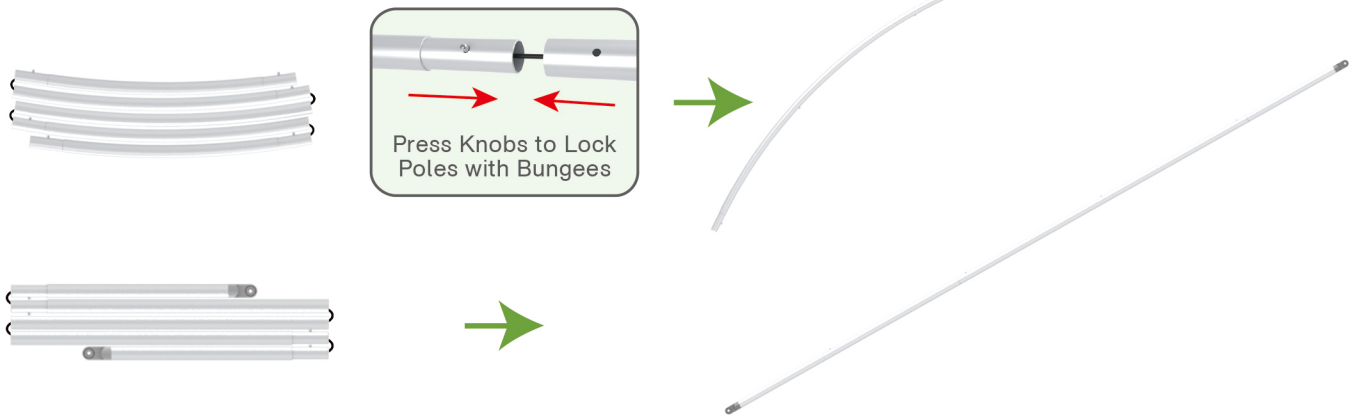


(2) Printed Graphic Fabric Banner (Optional)



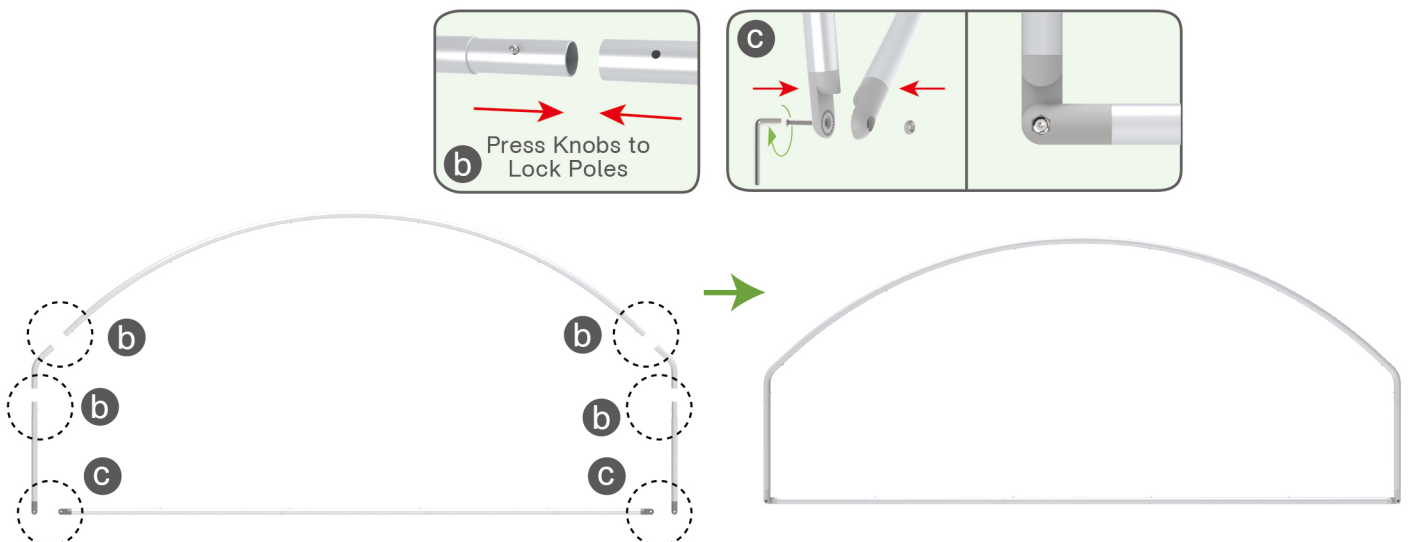
STEP 01

Connect to make long poles according to labelings.



STEP 02

Connect long poles with corner poles according to labelings.



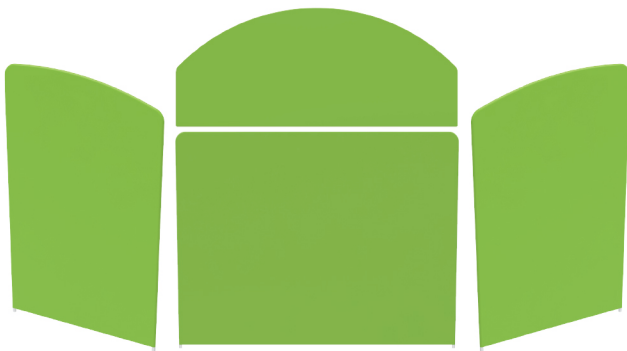
STEPS

STEP 03

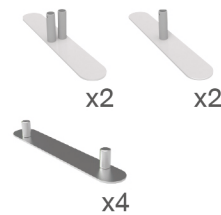
Slide fabric banner on frame from top and zip up at bottom.



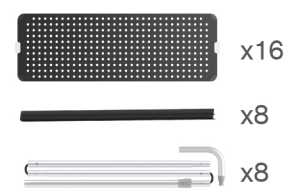
Booth Set Assembly



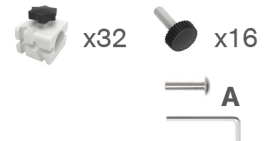
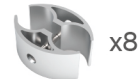
(1) Base



(2) Shelving Board

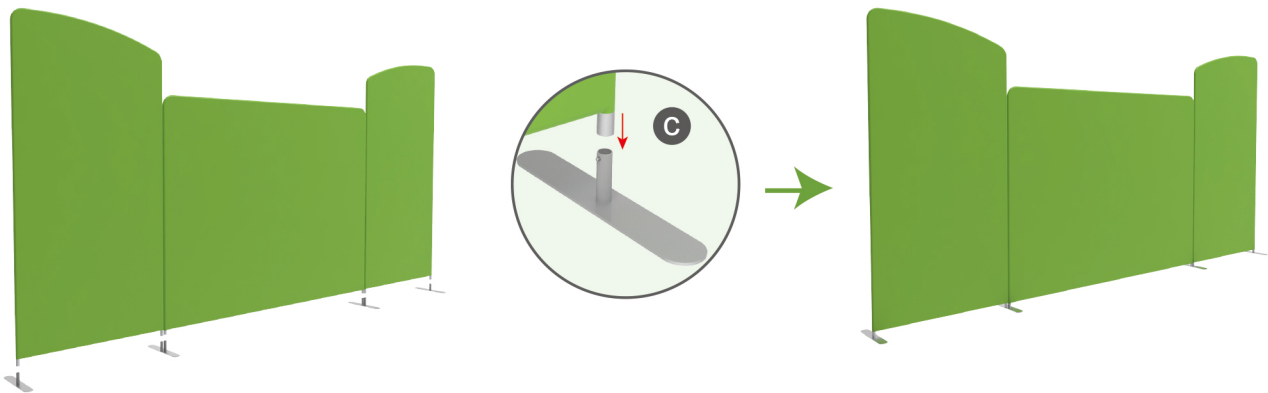


(3) 180° C-Shaped Clip



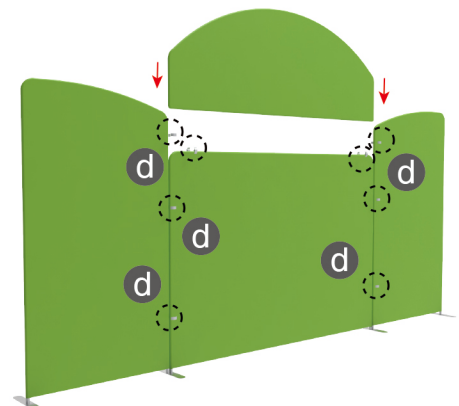
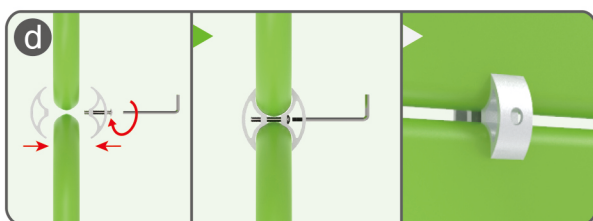
STEP 01

Insert display stands onto feet by pressing their knobs.



STEP 02

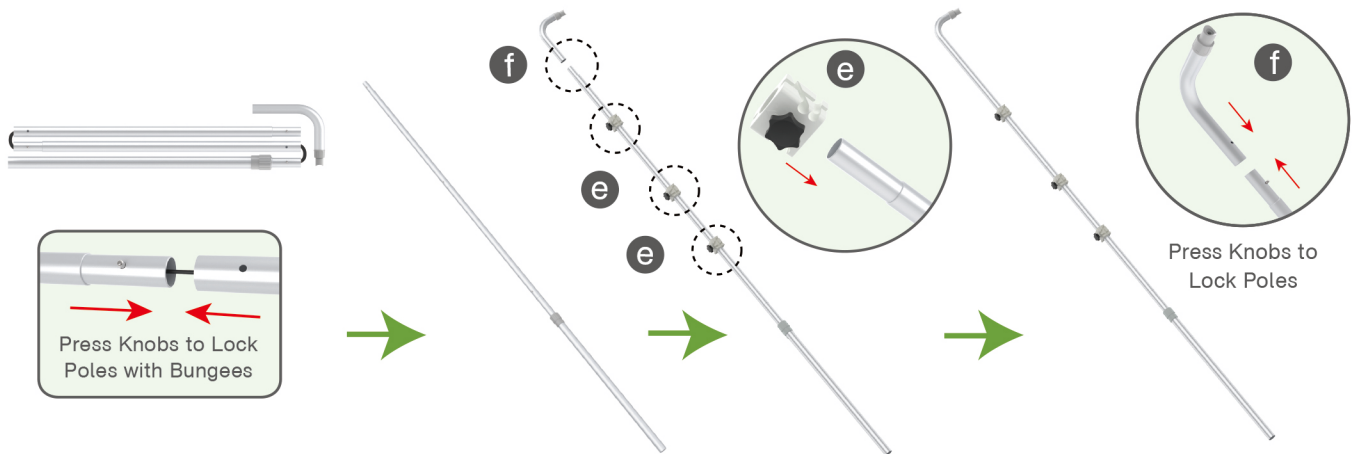
Interconnect display stands with C-shaped clips.



STEPS

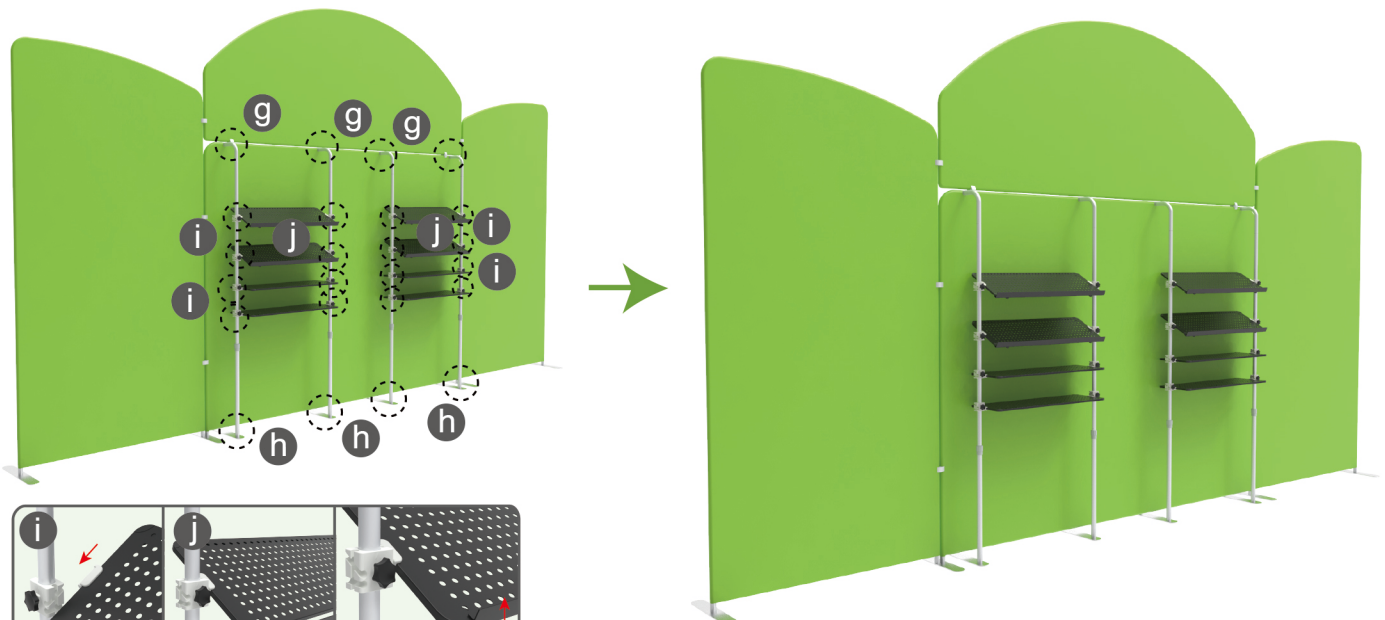
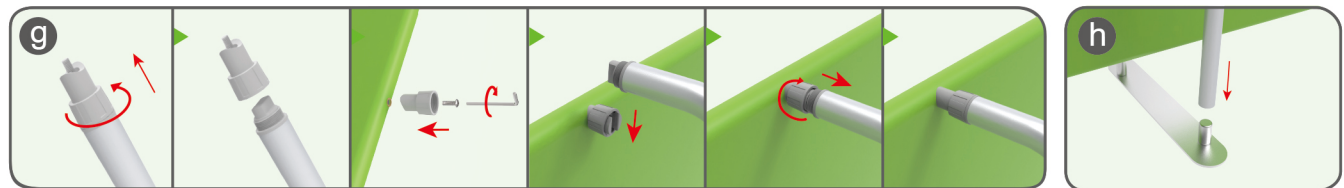
STEP 03

Connect to make long poles according to labelings, slide three-way clips onto long poles, insert short curved poles onto their top by pressing their knobs.



STEP 04

Connect support poles onto frame, clip into hanging boards based on directions of three-way clips & tightening with thumb screws.



Clip into hanging boards based on directions of three-way clips & tightening with thumb screws, clip F-shaped bar onto hanging board with thumb screws.

20X20FT-BOOTH-D