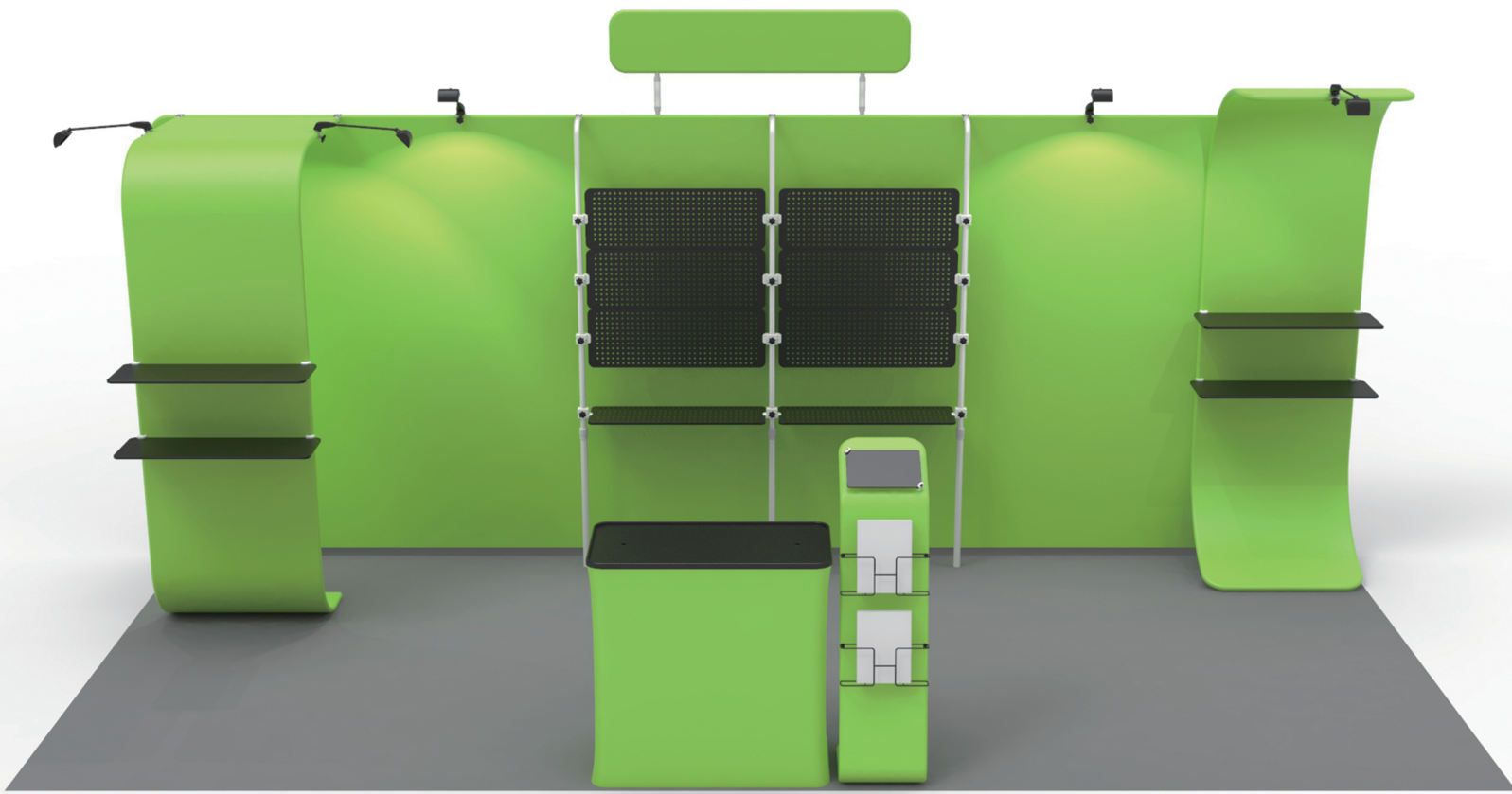


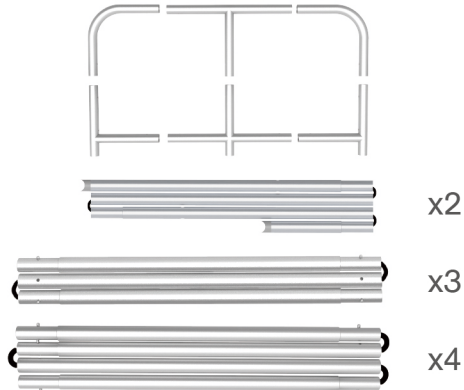
INSTRUCTION



10X20FT-BOOTH-V

STEPS

(1) Hardware

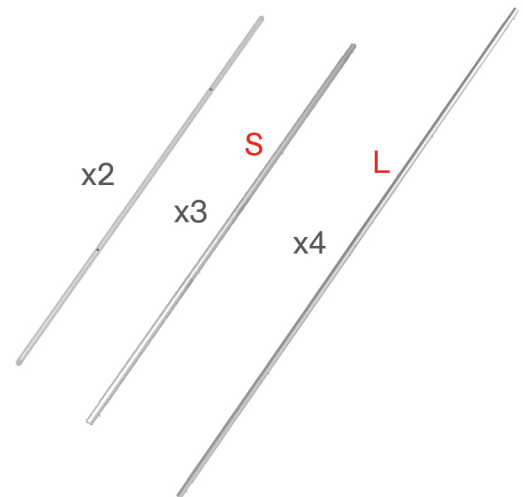
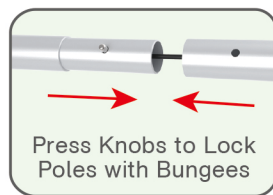
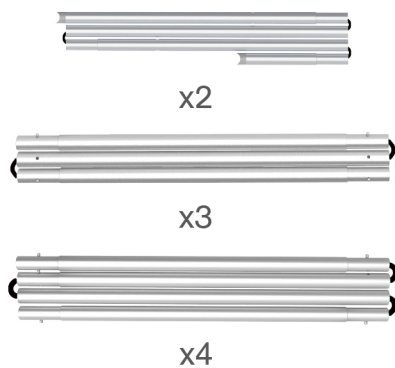


(2) Printed Graphic Fabric Banner (Optional)



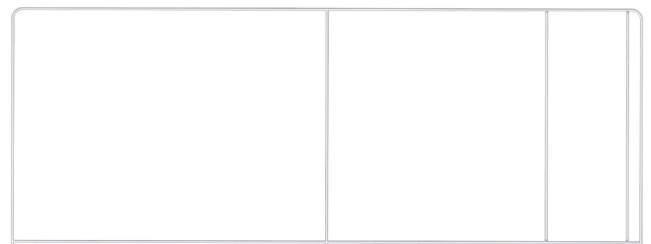
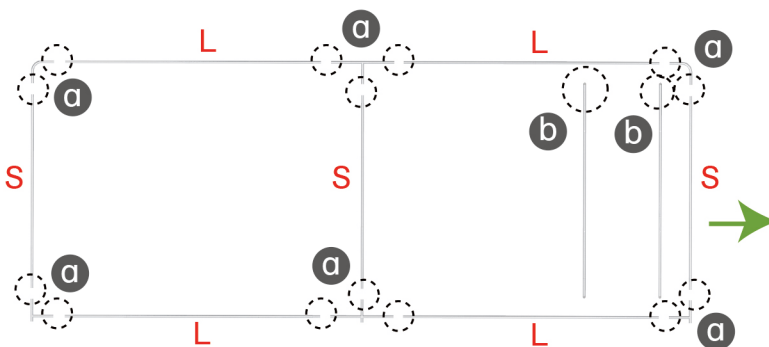
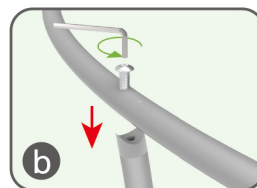
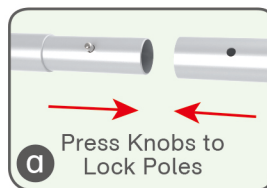
STEP 01

Connect to make long poles according to labelings.



STEP 02

Connect long poles with corner poles according to labelings.



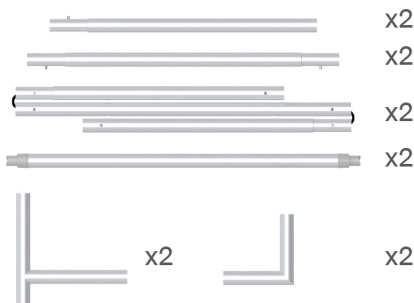
STEPS

STEP 03

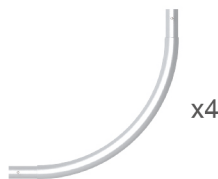
Slide fabric banner on frame from top and zip up at bottom.



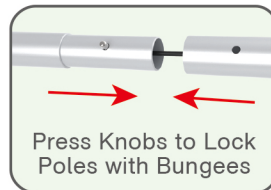
(1) Hardware



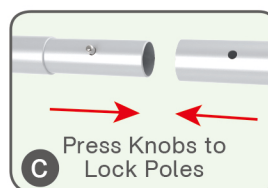
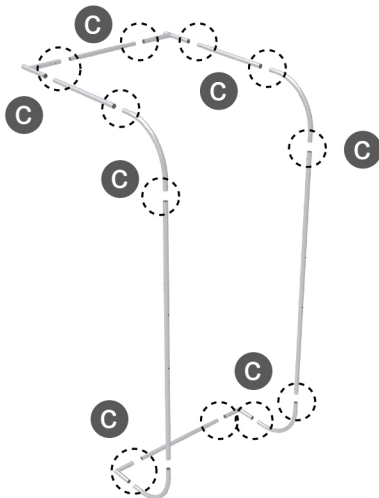
(2) Printed Graphic Fabric Banner (Optional)



STEP 01 Connect to make long poles according to labelings.

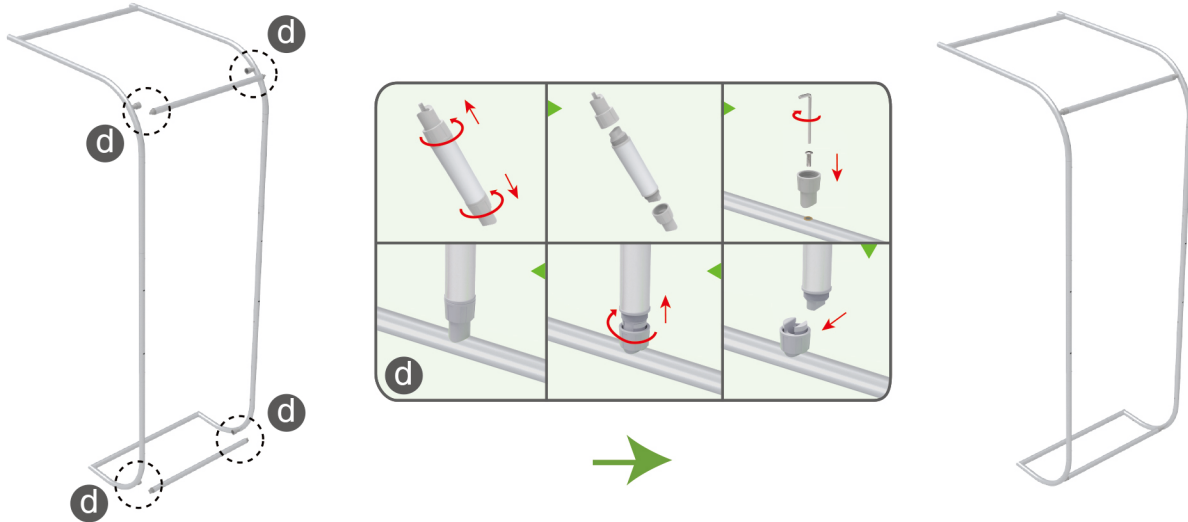


STEP 02 Connect long poles with corner poles according to labelings.

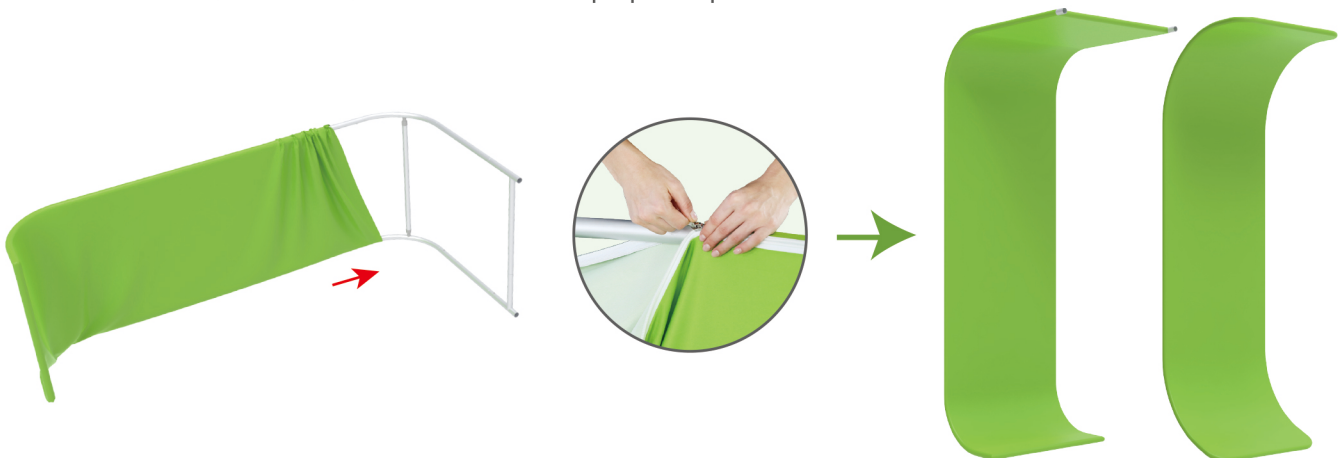


★ One Tool (Hex Wrench) **STEPS****STEP 03**

Connect support poles onto frame.

**STEP 04**

Slide fabric banner on frame from bottom and zip up at top.



Same Steps for Other Display Stands

(1) Hardware

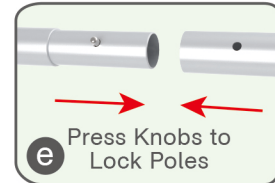
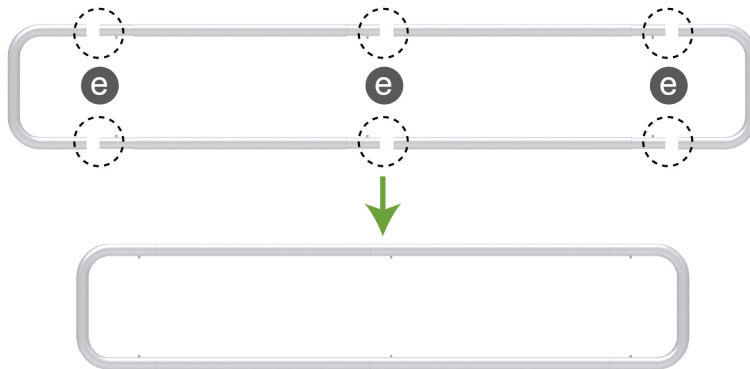


(2) Printed Graphic Fabric Banner (Optional)

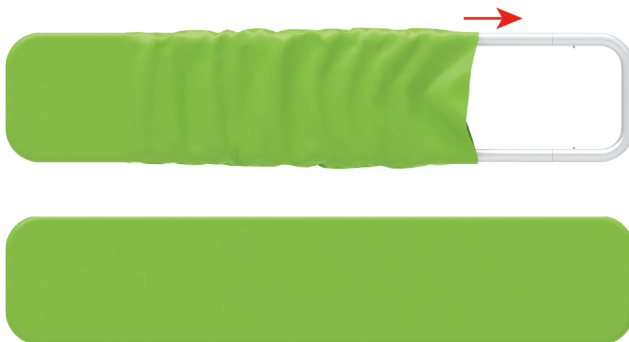


STEPS

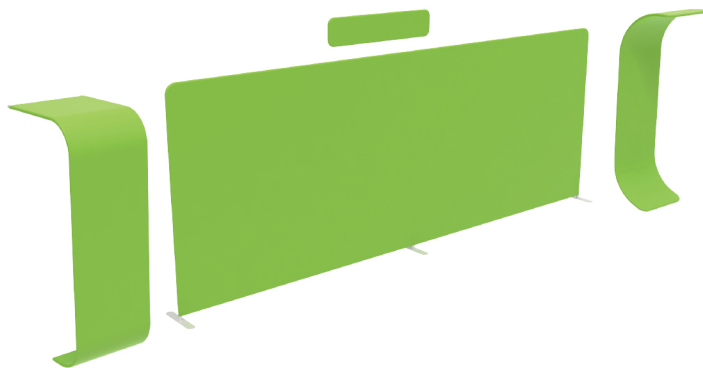
STEP 01 Connect poles according to labelings.



STEP 02 Slide fabric banner on frame from left and zip up at right.



Booth Set Assembly



(1) Base



(2) LED Light & Clip



(3) Shelf & Bracket



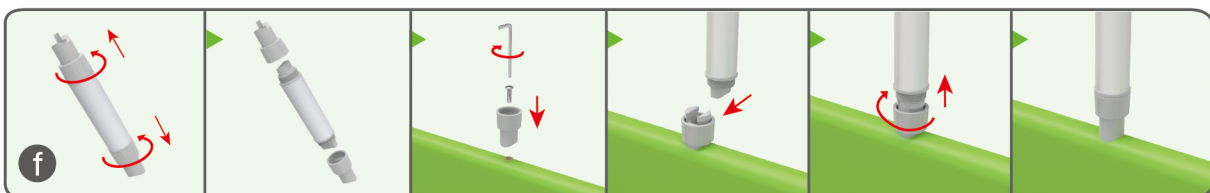
x2



(4) Shelving Board

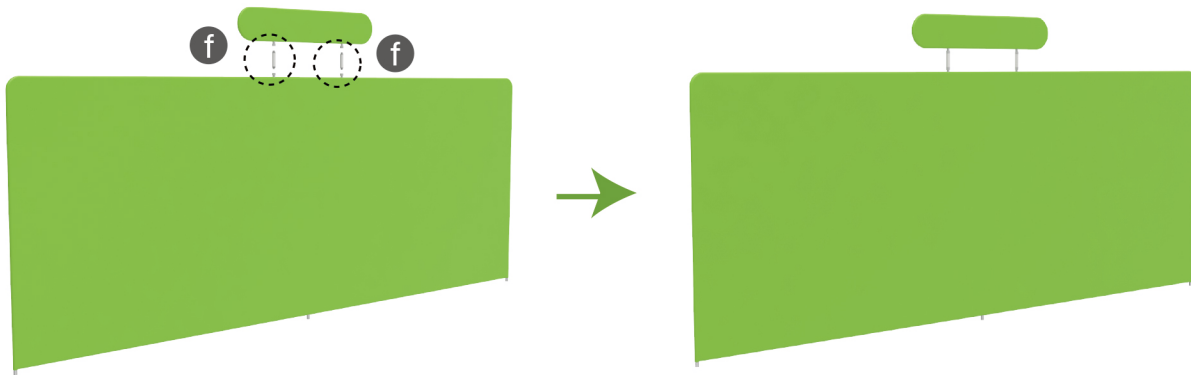
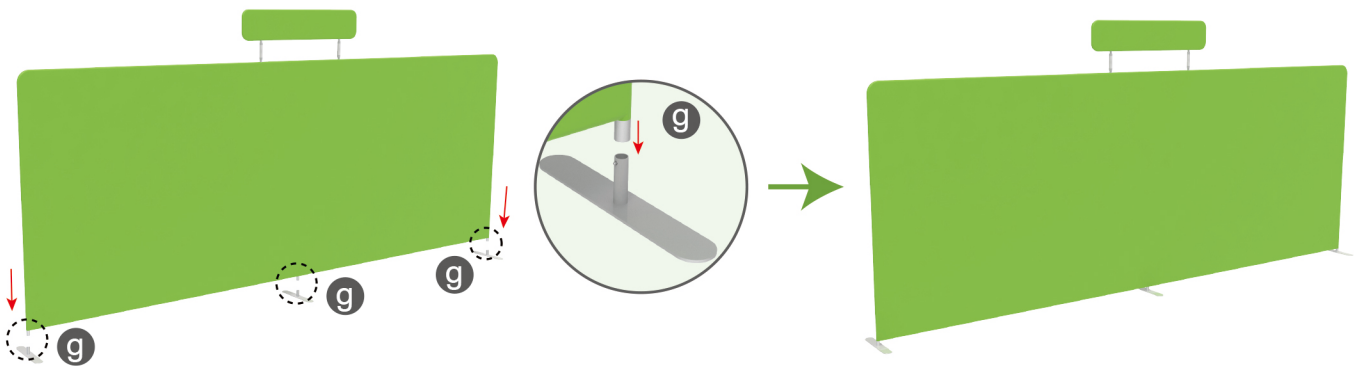


STEP 01 Connect header and display stand with support poles.

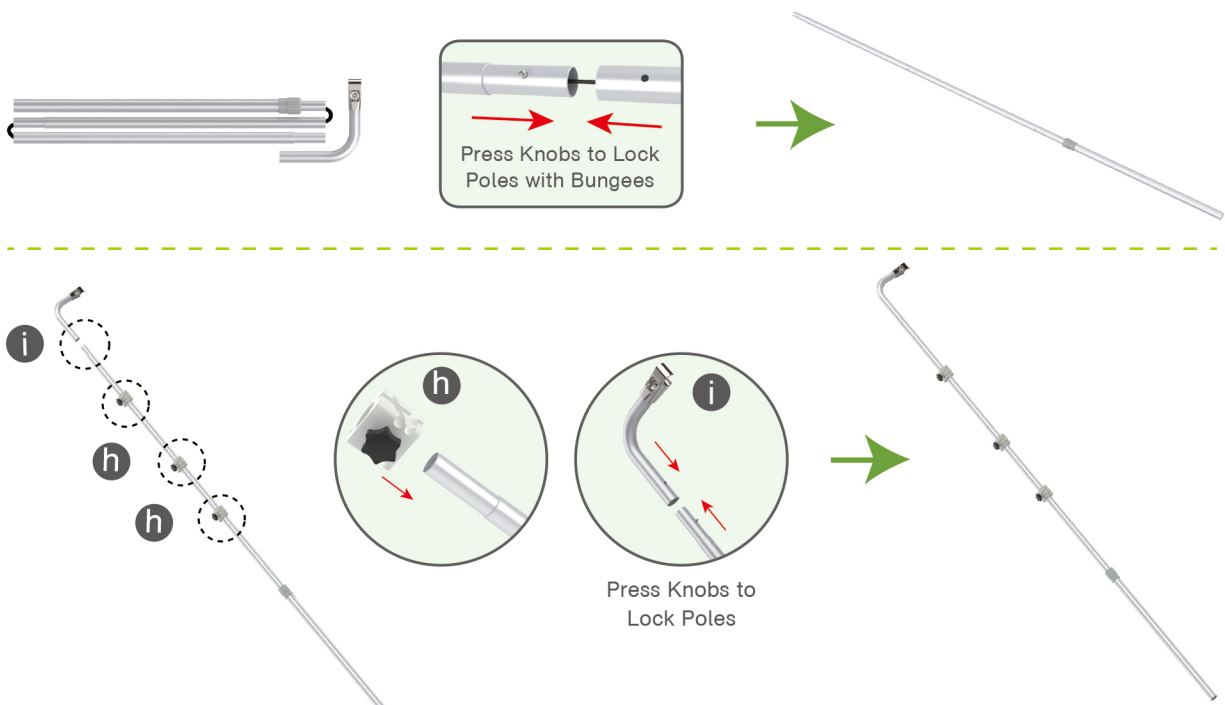


★ One Tool (Hex Wrench)

STEPS

**STEP 02** Insert display stands onto feet by pressing their knobs.**STEP 03**

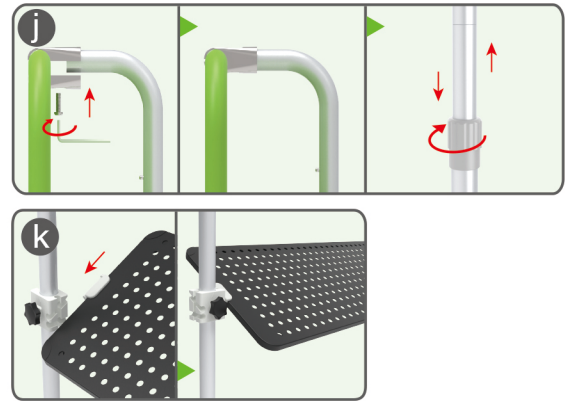
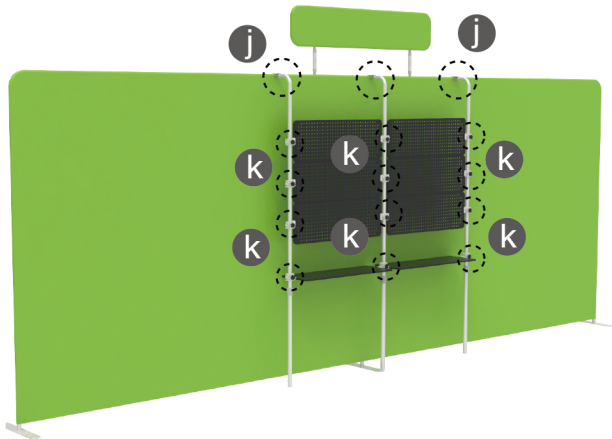
Connect to make long poles according to labelings, slide three-way clips onto long poles, insert short curved poles onto their top by pressing their knobs.



STEPS

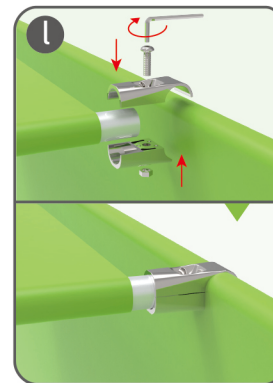
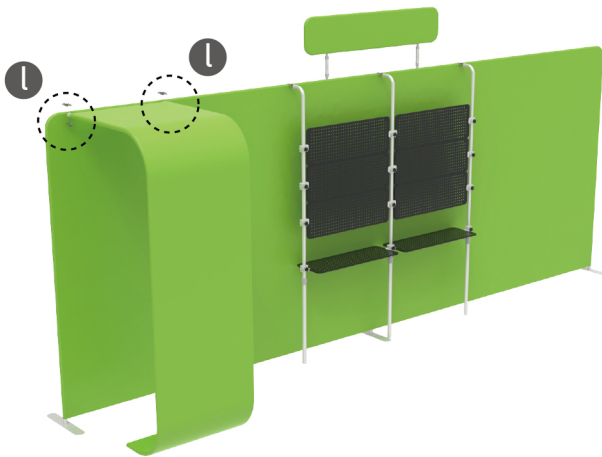
STEP 04

Connect long poles and display stand with clamps, adjust their height properly as needed by loosening and tightening screws.

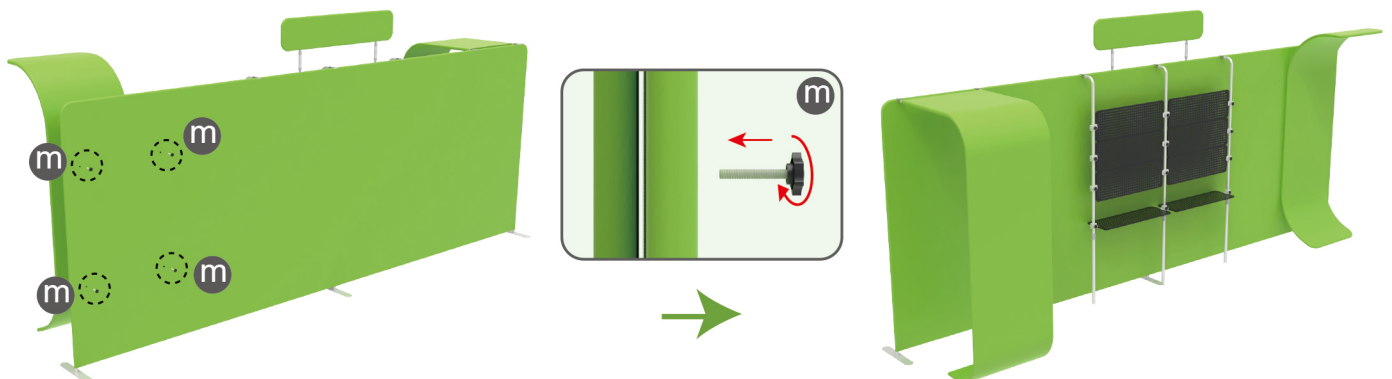


Clip into hanging boards based on directions of three-way clips & tightening with thumb screws, clip F-shaped bar onto hanging board with thumb screws.

STEP 05 Connect display stands with arm clips.



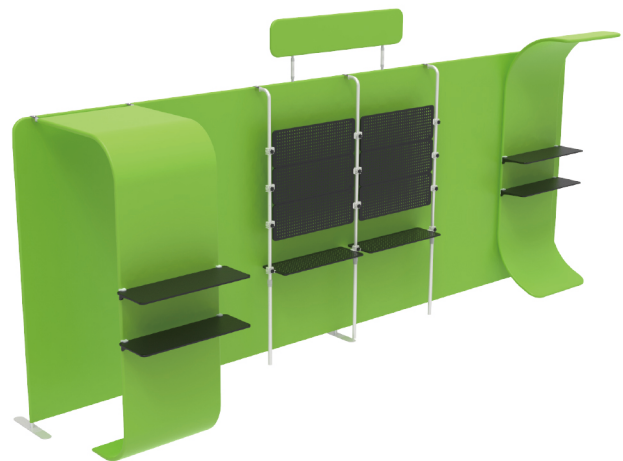
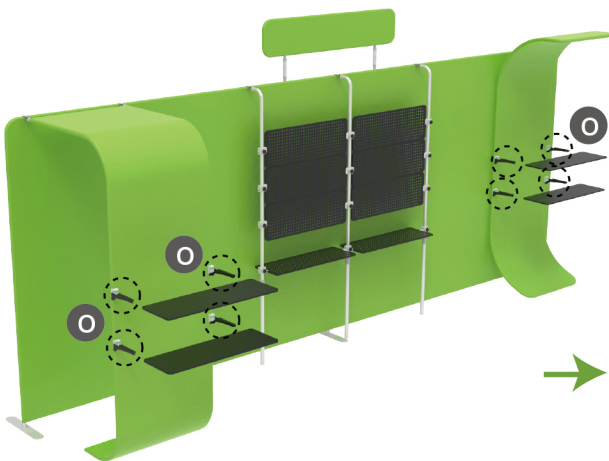
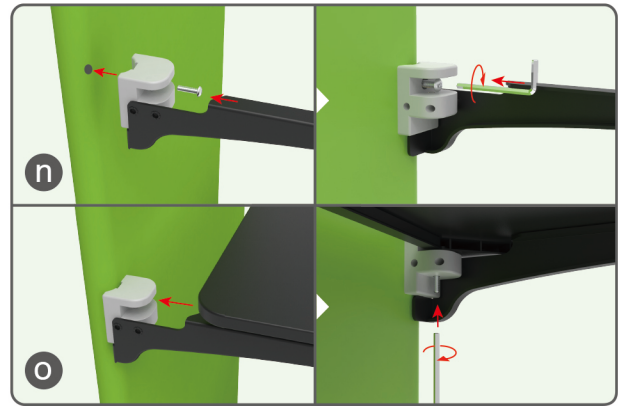
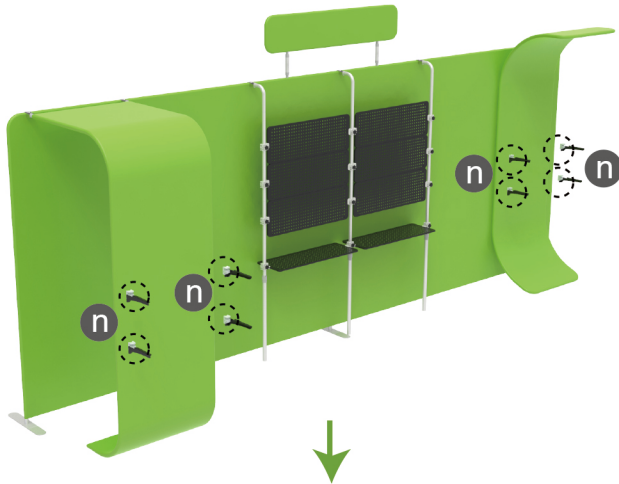
STEP 06 Connect display stands with thumb screws.



STEPS

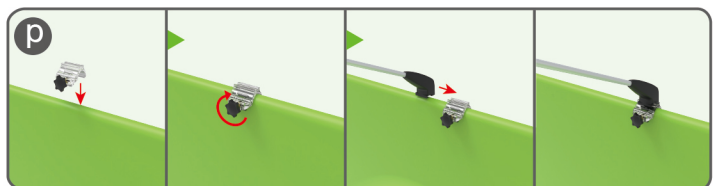
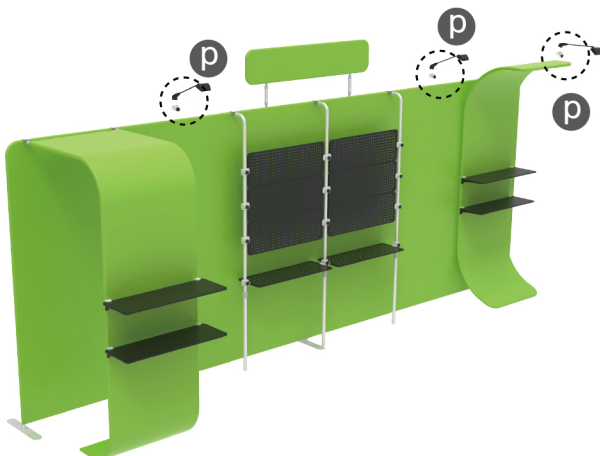
STEP 07

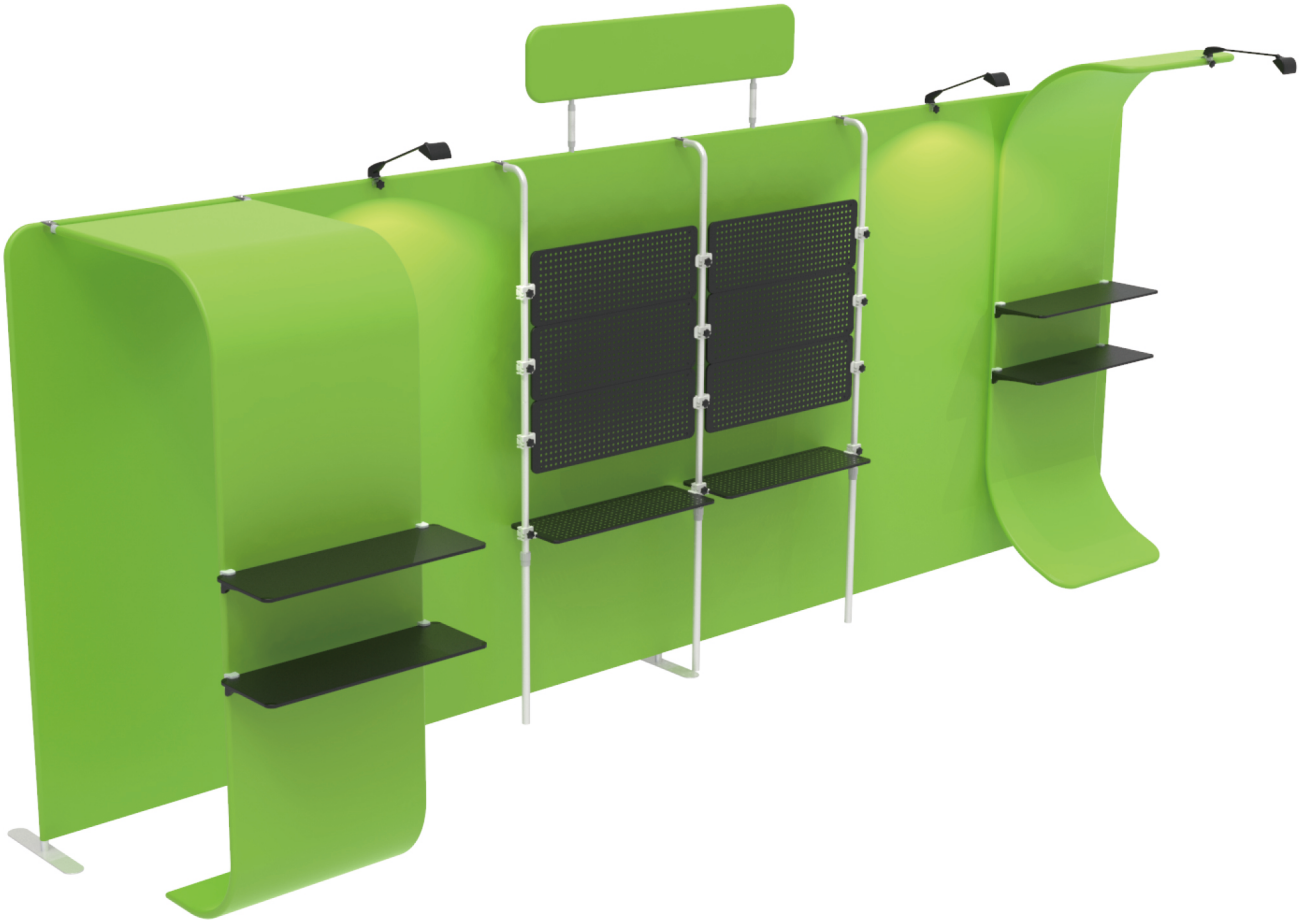
Screw brackets onto display stand with hex wrench, insert shelves into slots.



STEP 08

Screw light clips at top of display stands, slide lights onto them and adjust their direction.



STEPS**10X20FT-BOOTH-V**

STEPS

(1) Durable Plastic Hard Case, Aluminum Support Poles

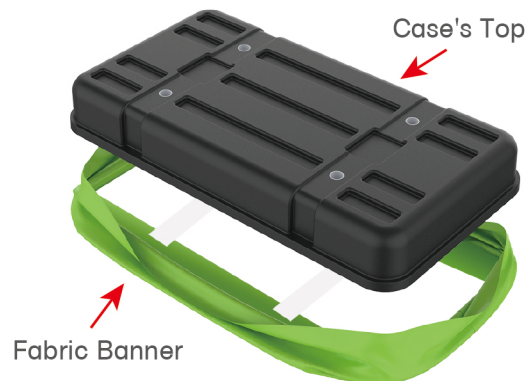


(2) Printed Graphic Fabric Banner



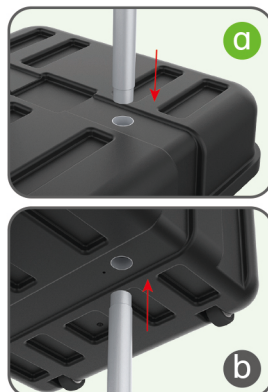
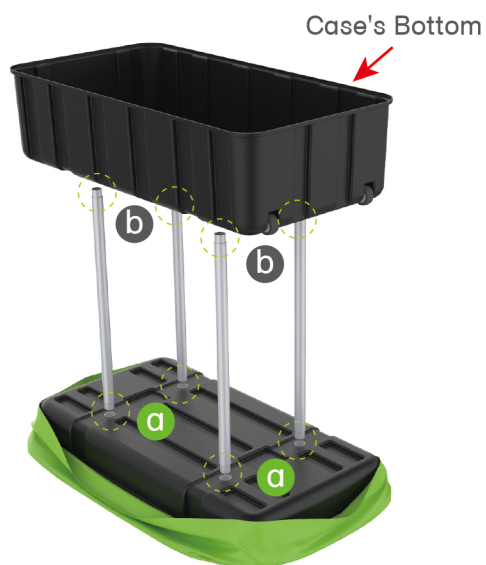
STEP 01

Put hard case's top into fabric banner.



STEP 02

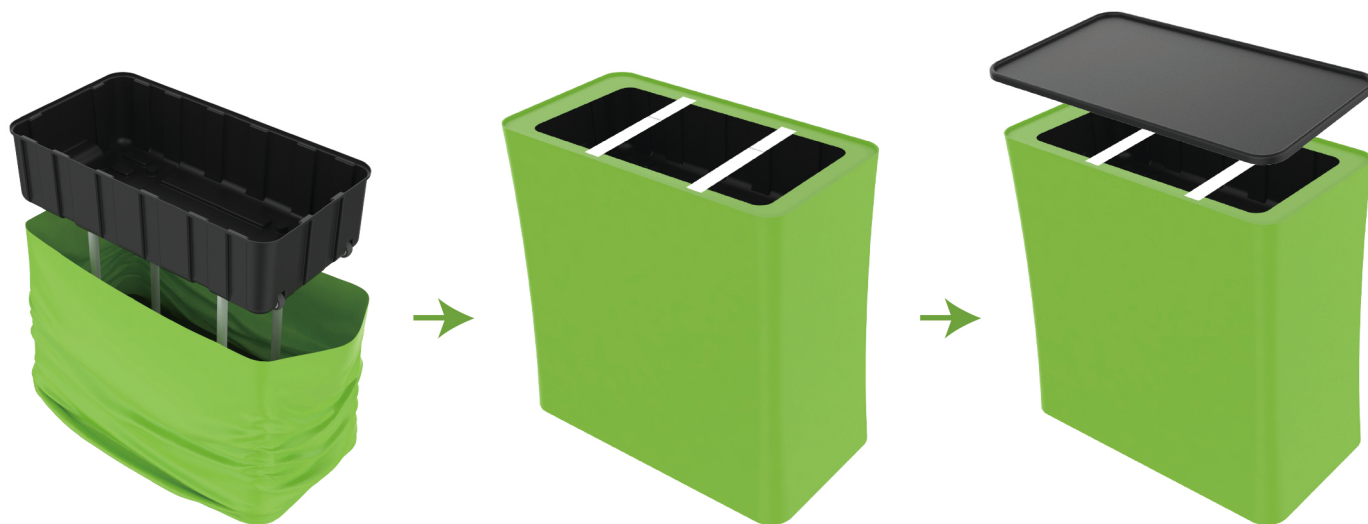
Insert support poles into hard case's top & bottom.



STEPS

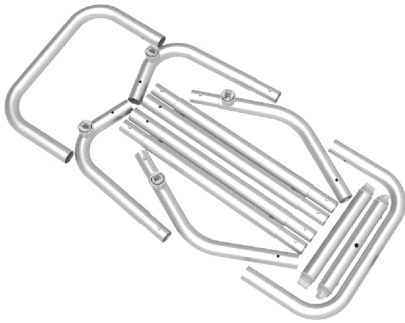
STEP 04

Wrap fabric banner from bottom to top & twist it to be smooth, lay hard case's intermediate panel on podium's top.

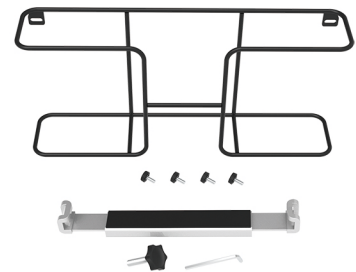


★ One Tool (Hex Wrench) **STEPS**

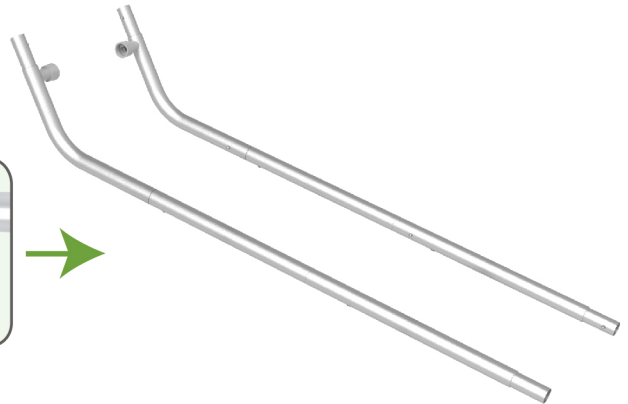
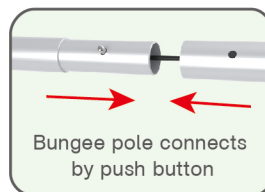
(1) Snap Tubes



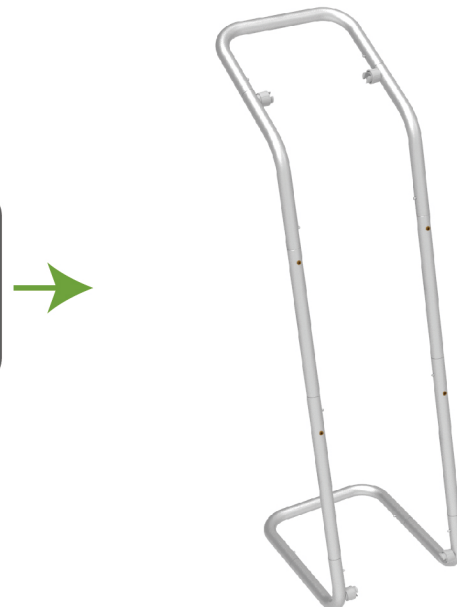
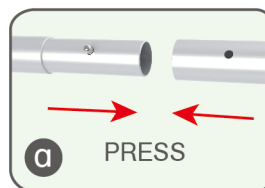
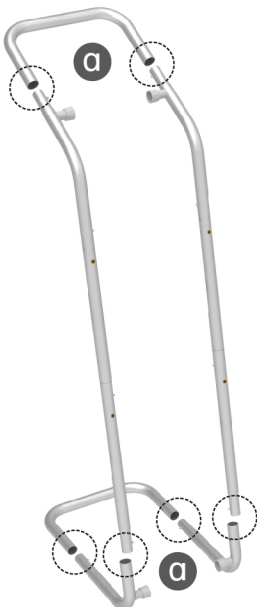
(2) Printed fabric banner

(3) Brochure rack x 2 / Screws x 4
Tablet PC holder x1**STEP 01**

To Connect the tubes according to the labellings

**STEP 02**

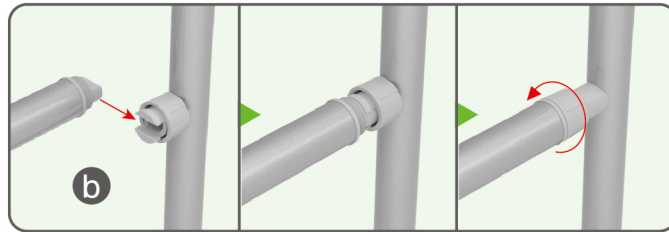
To connect 2 long side tubes by the corner pieces



STEPS

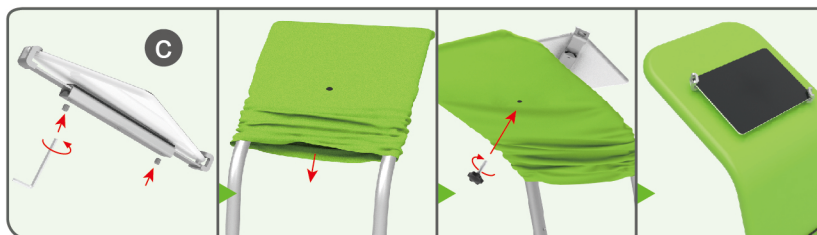
STEP 03

To install the cross bar according to labellings



STEP 04

To wrap the fabric from top to the middle of frame, then put the iPad in the holder and adjust the holder to right size and lock it by Allen Key Afterwards, install the set to the display stand.



STEPS

STEP 05

To pull the fabric banner to bottom and zip up.



STEP 06

To Install 2 racks by screws in position

