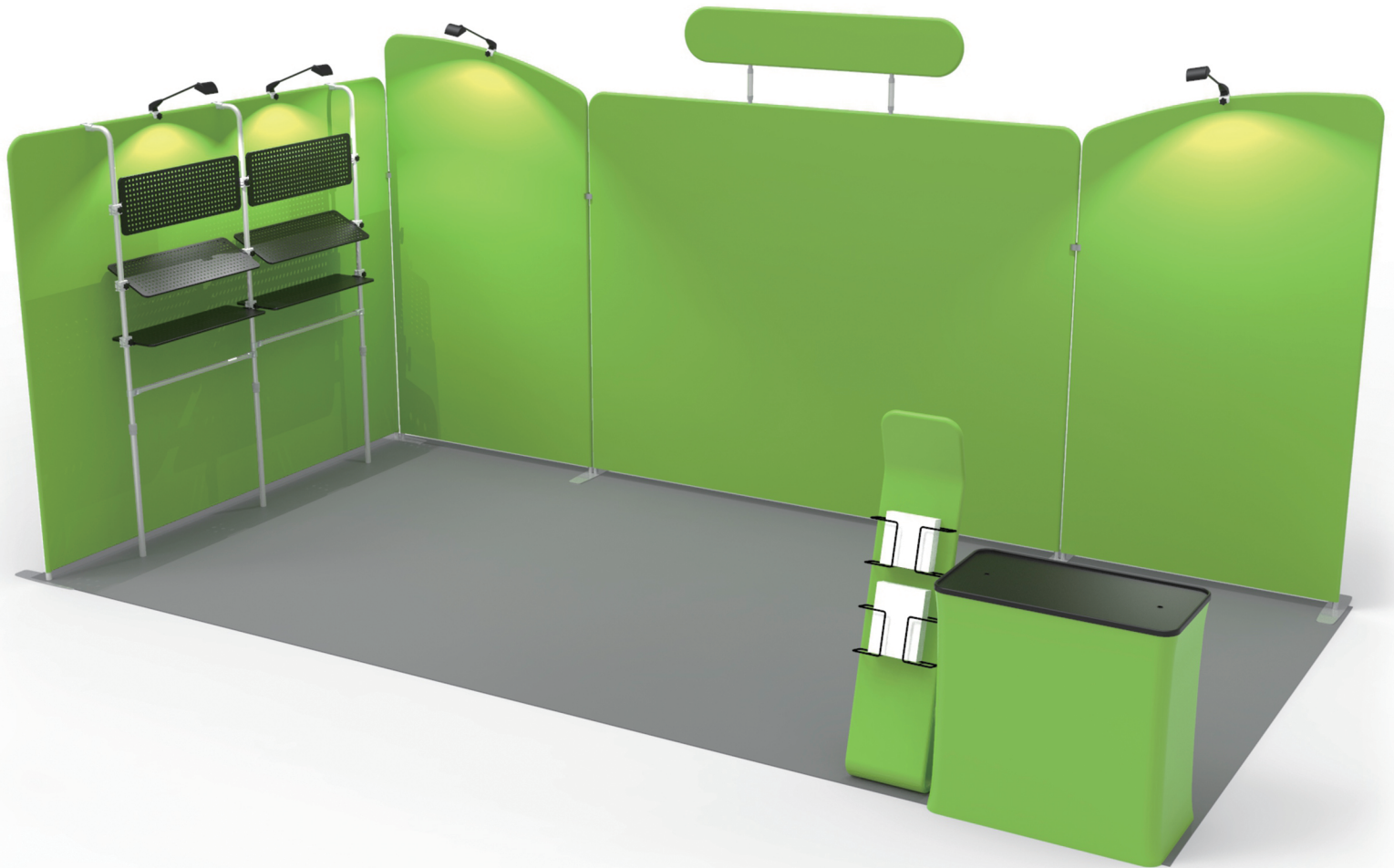


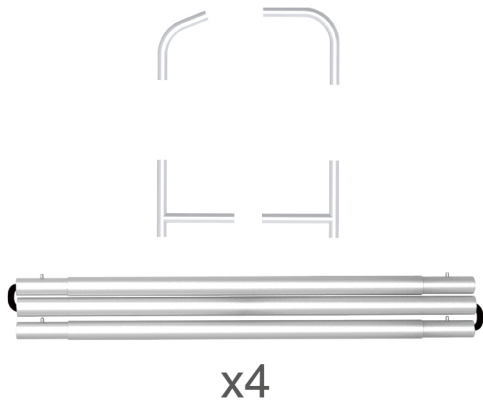
# INSTRUCTION



**10X20FT-BOOTH-W**

**STEPS**

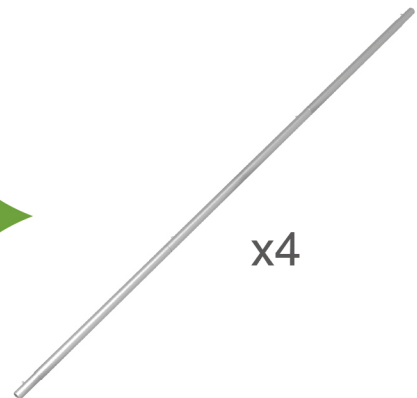
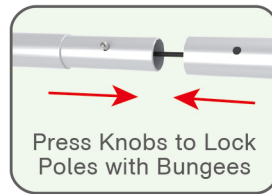
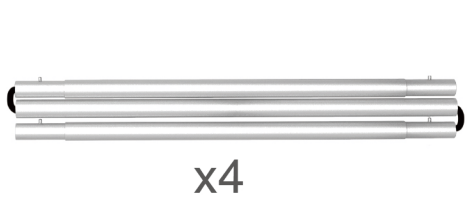
(1) Hardware



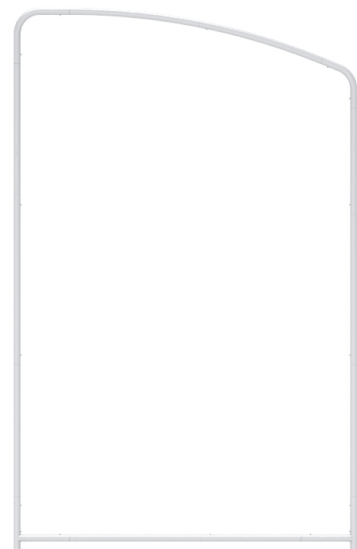
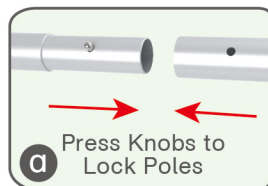
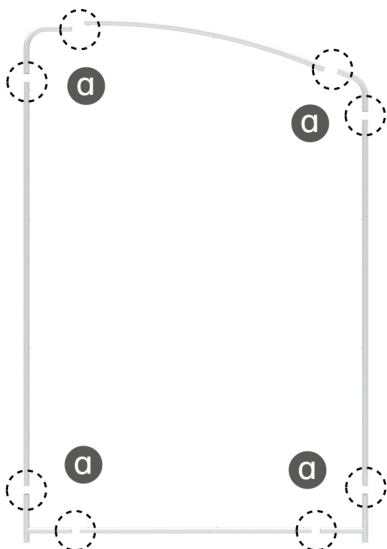
(2) Printed Graphic Fabric Banner (Optional)

**STEP 01**

Connect to make long poles according to labelings.

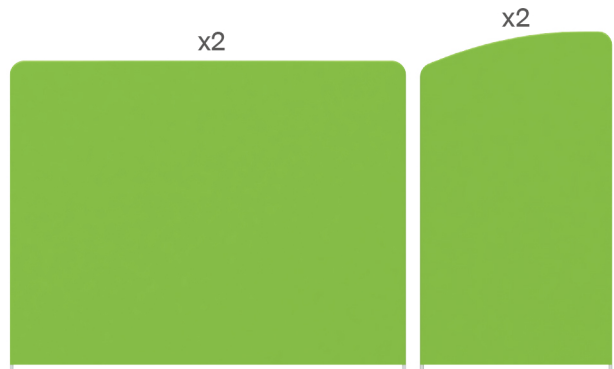
**STEP 02**

Connect long poles with corner poles according to labelings.



## STEPS

**STEP 03** Slide fabric banner on frame from top and zip up at bottom.



Same Steps for Other Display Stands

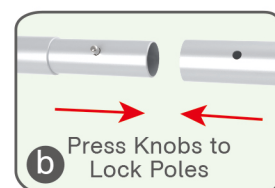
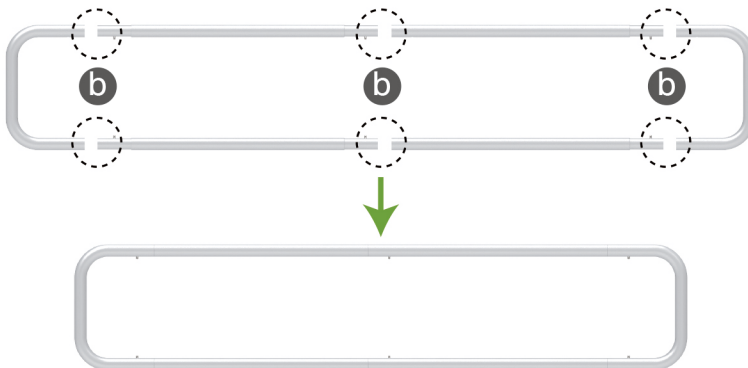
(1) Hardware



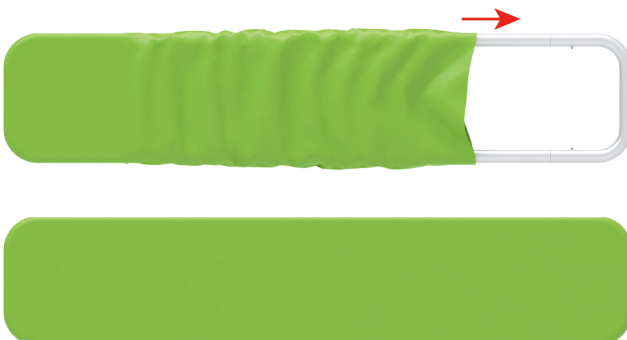
(2) Printed Graphic Fabric Banner (Optional)



**STEP 01** Connect poles according to labelings.

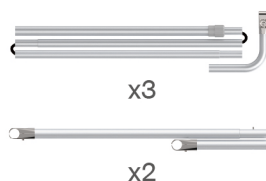


**STEP 02** Slide fabric banner on frame from left and zip up at right.

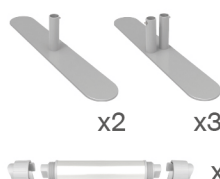


## STEPS

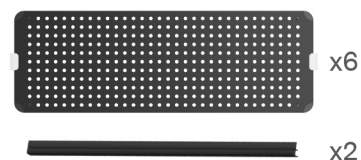
## Booth Set Assembly



(1) Base



(2) Shelving Board



(3) LED Light &amp; Clip

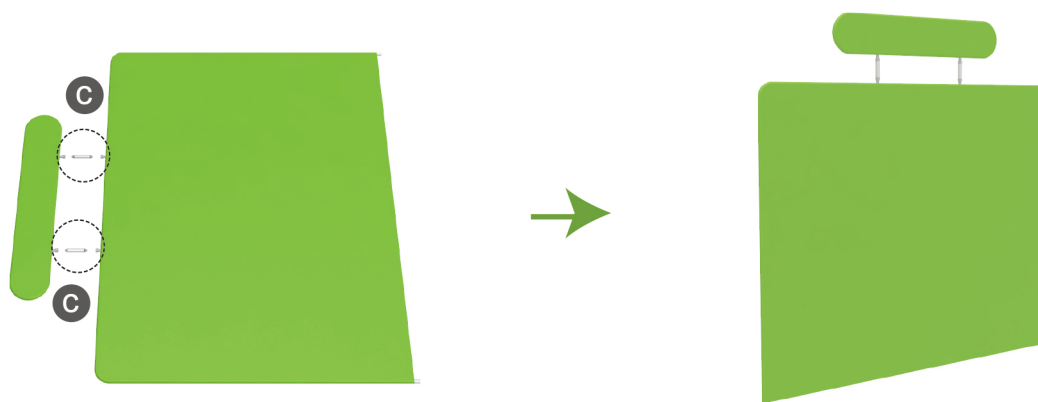
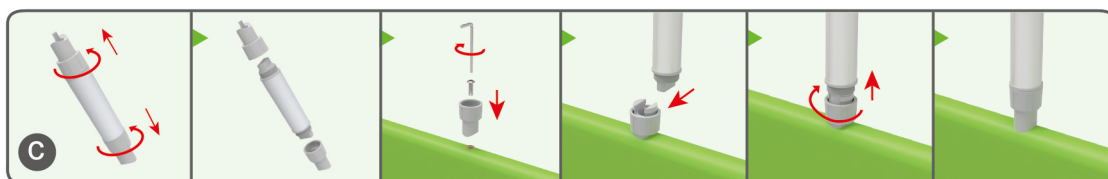


(4) 90° C-Shaped Clip &amp; 180° C-Shaped Clip



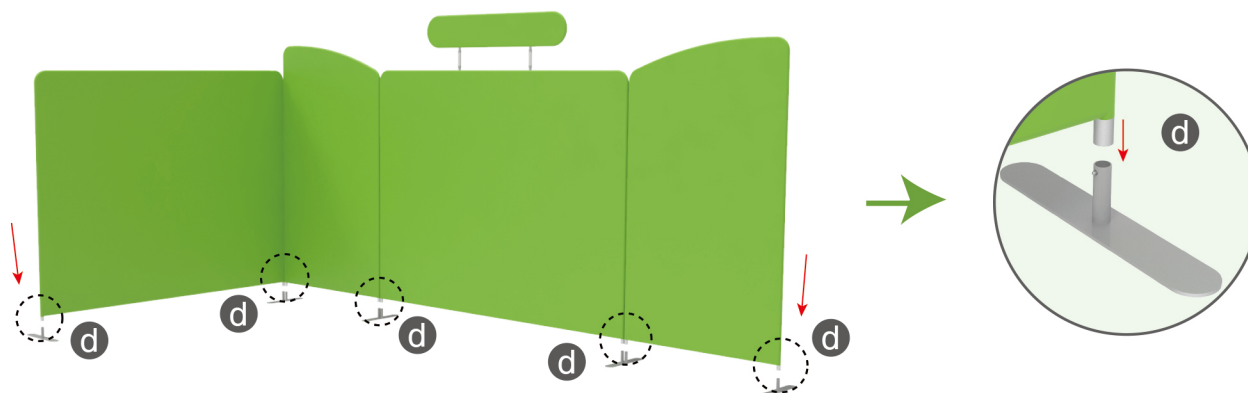
## STEP 01

Connect header and display stand with support poles.



## STEP 02

Insert display stands onto feet by pressing their knobs.

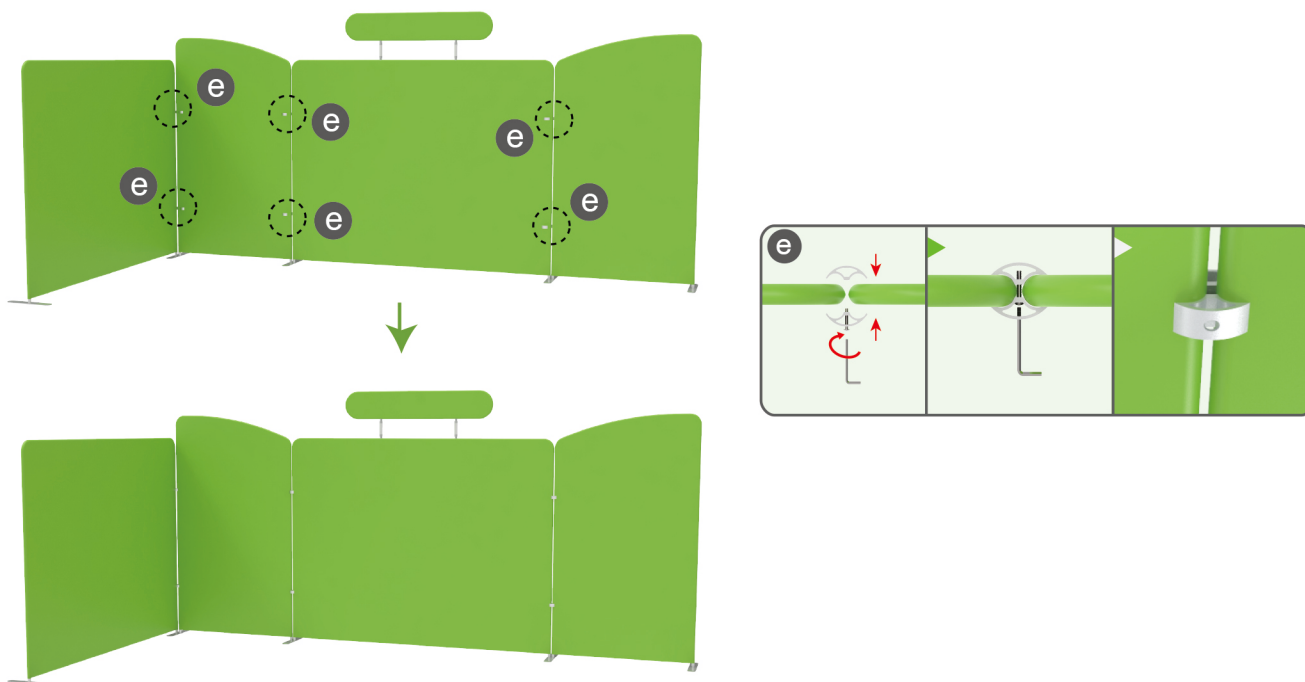




## STEPS

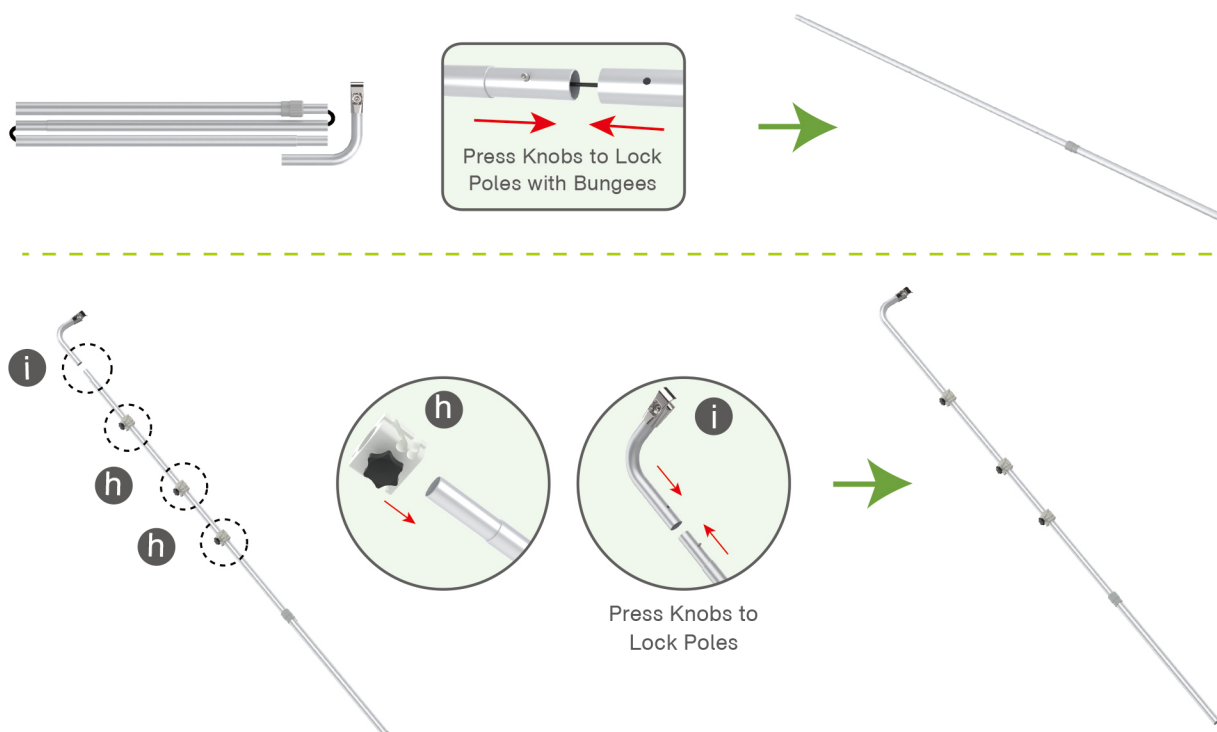
## STEP 03

Interconnect display stands with C-shaped clips.



## STEP 04

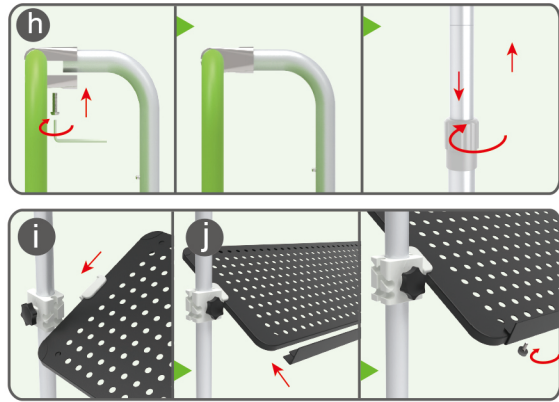
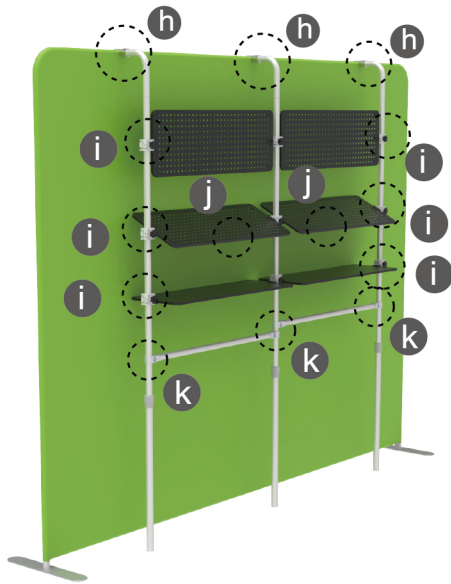
Connect to make long poles according to labelings, slide three-way clips onto long poles, insert short curved poles onto their top by pressing their knobs.



## STEPS

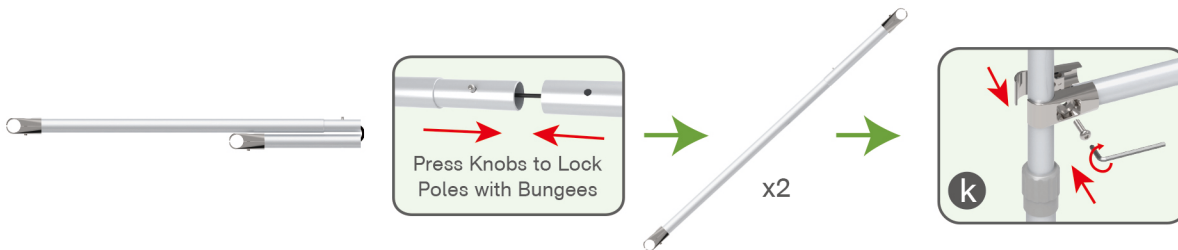
## STEP 05

Connect long poles and display stand with clamps, adjust their height properly as needed by loosening and tightening screws.



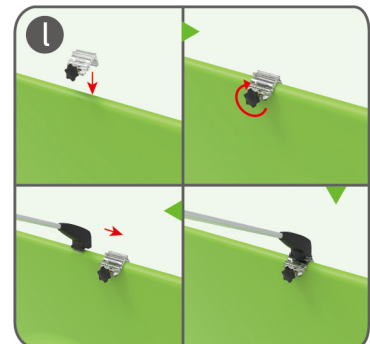
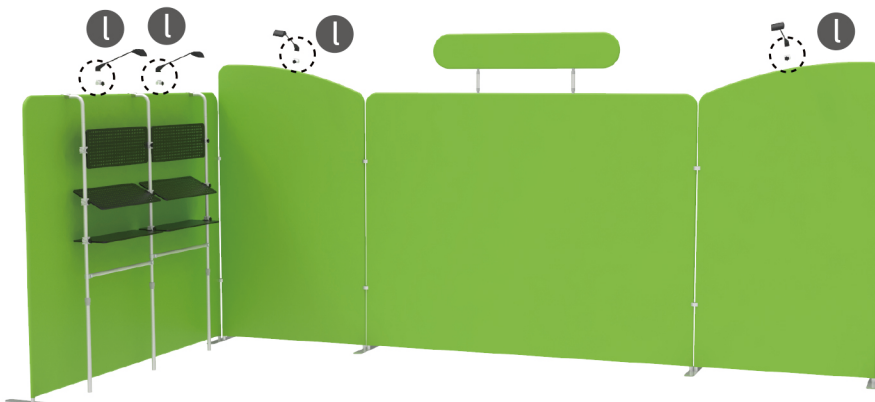
① Clip into hanging boards based on directions of three-way clips & tightening with thumb screws, clip F-shaped bar onto hanging board with thumb screws.

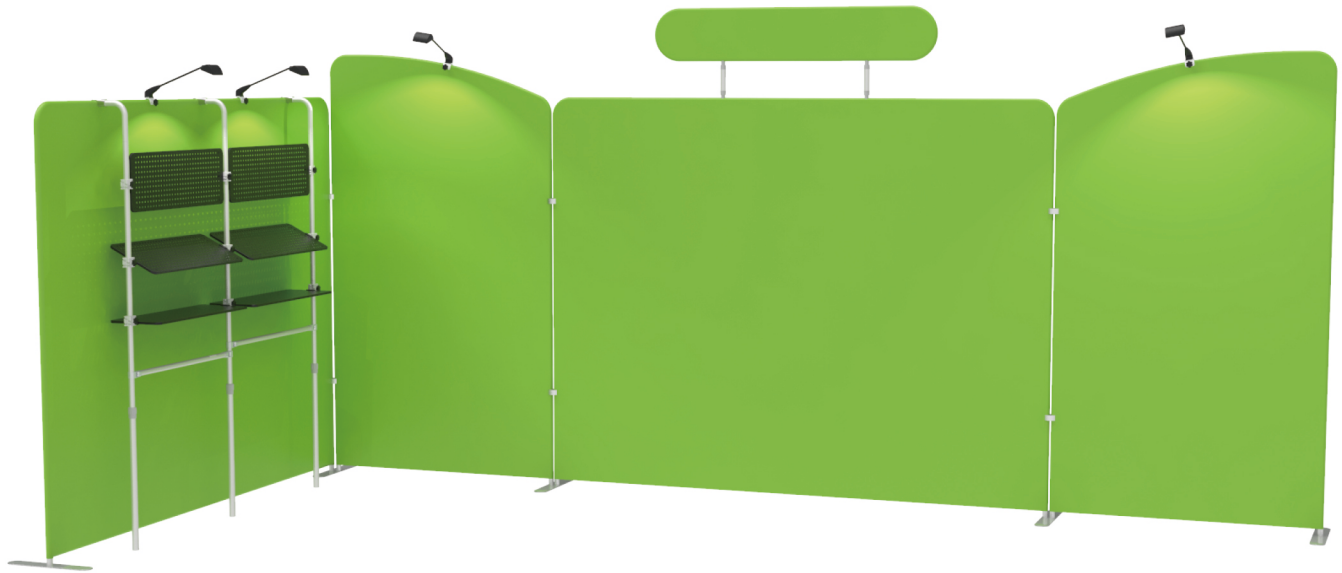
② Connect cross bars and long poles with clamps.



## STEP 06

Screw light clips at top of display stands, slide lights onto them and adjust their direction.



**STEPS****10X20FT-BOOTH-W**

## STEPS

(1) Durable Plastic Hard Case, Aluminum Support Poles

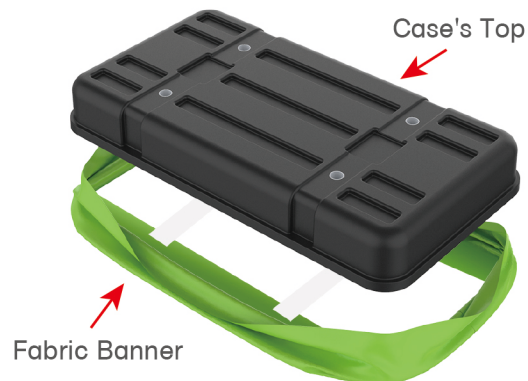


(2) Printed Graphic Fabric Banner



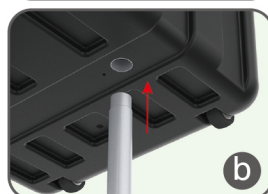
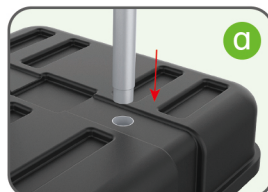
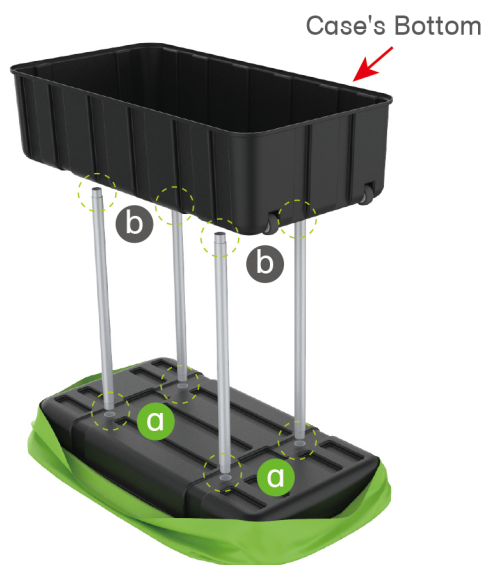
## STEP 01

Put hard case's top into fabric banner.



## STEP 02

Insert support poles into hard case's top &amp; bottom.

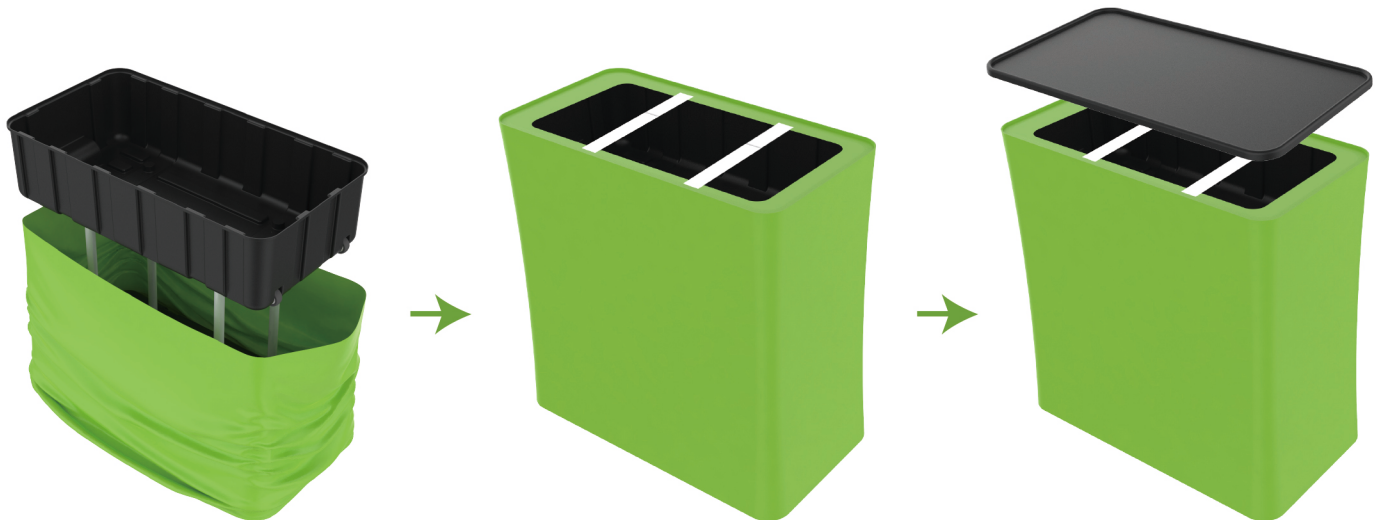




## STEPS

## STEP 04

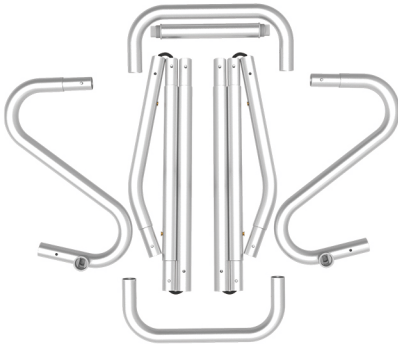
Wrap fabric banner from bottom to top & twist it to be smooth, lay hard case's intermediate panel on podium's top.





## STEPS

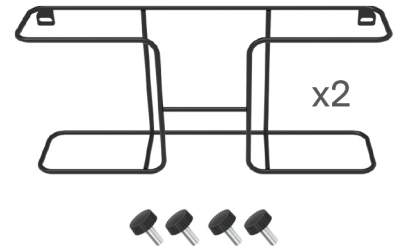
(1) Snap Tubes



(2) Printed fabric banner

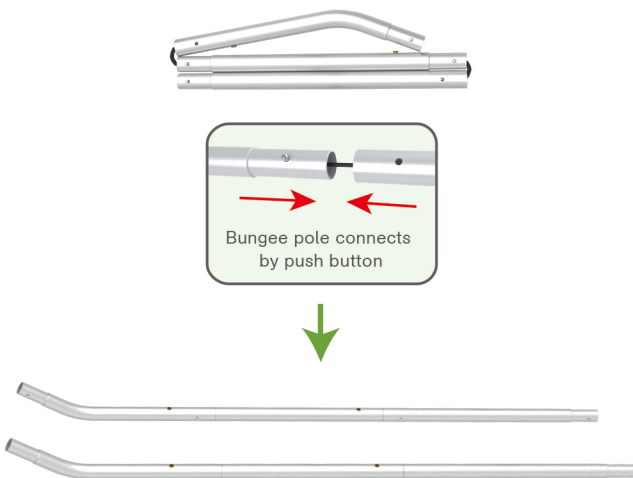


(3) Brochure rack x 2  
Screws x 4



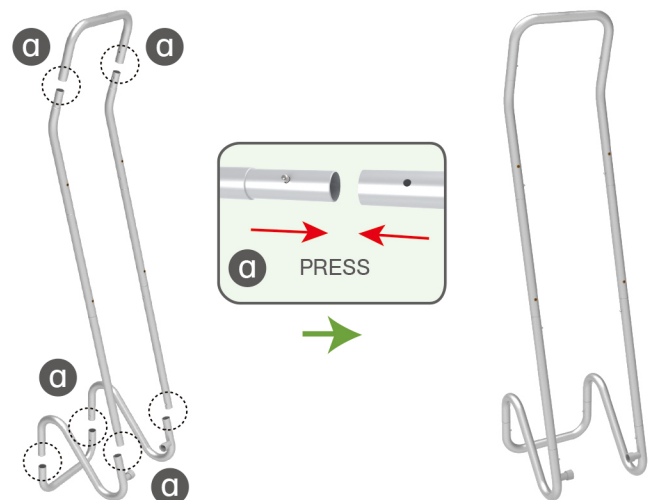
### STEP 01

To Connect the tubes according to the labellings

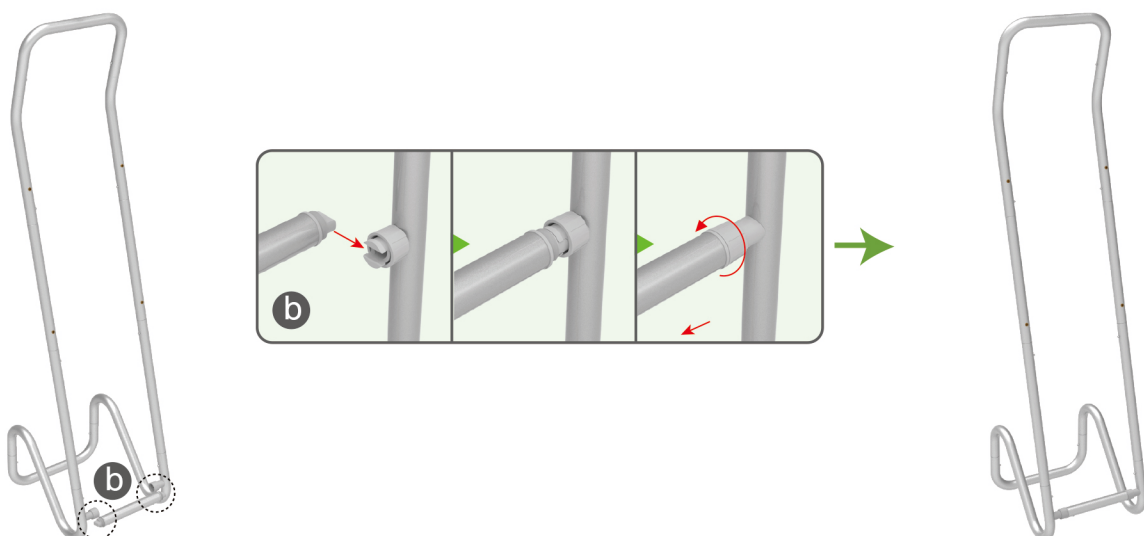


### STEP 02

To connect 2 long side tubes by the corner pieces



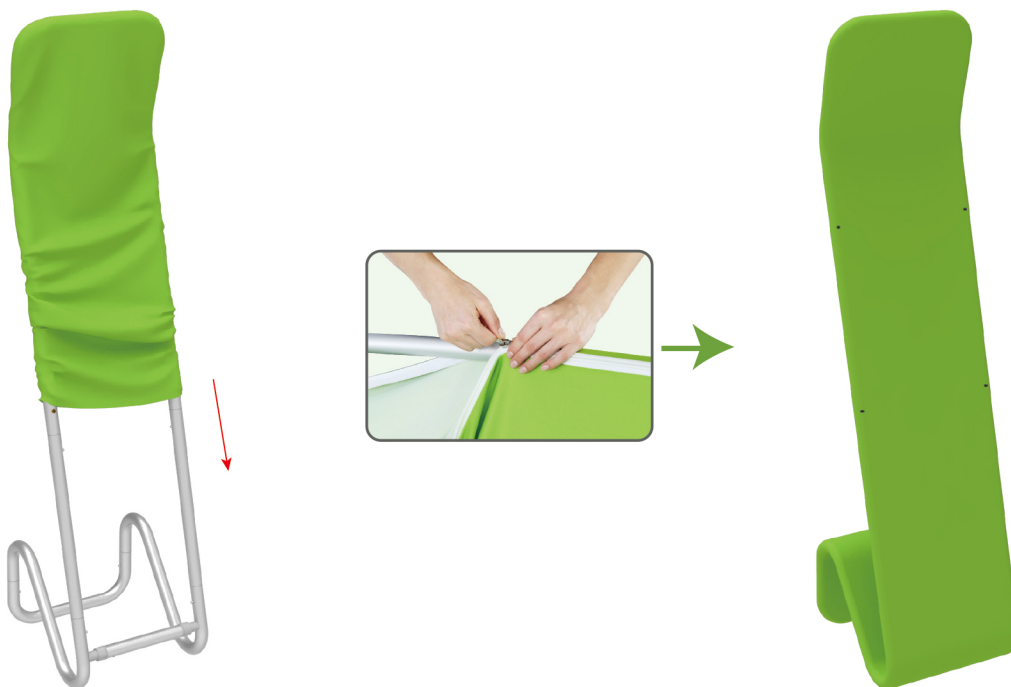
### STEP 03 To install the cross bar according to labellings



## STEPS

## STEP 04

To Wrap up the fabric banner from top to bottom and zip up.



## STEP 05

To install 2 racks by screws in position

