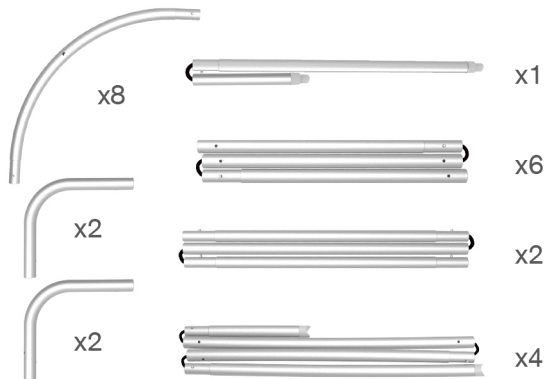
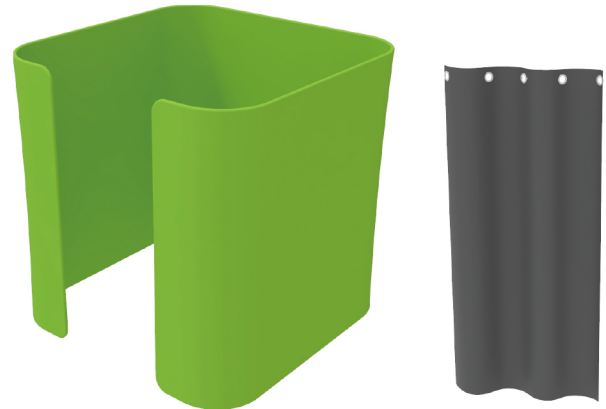
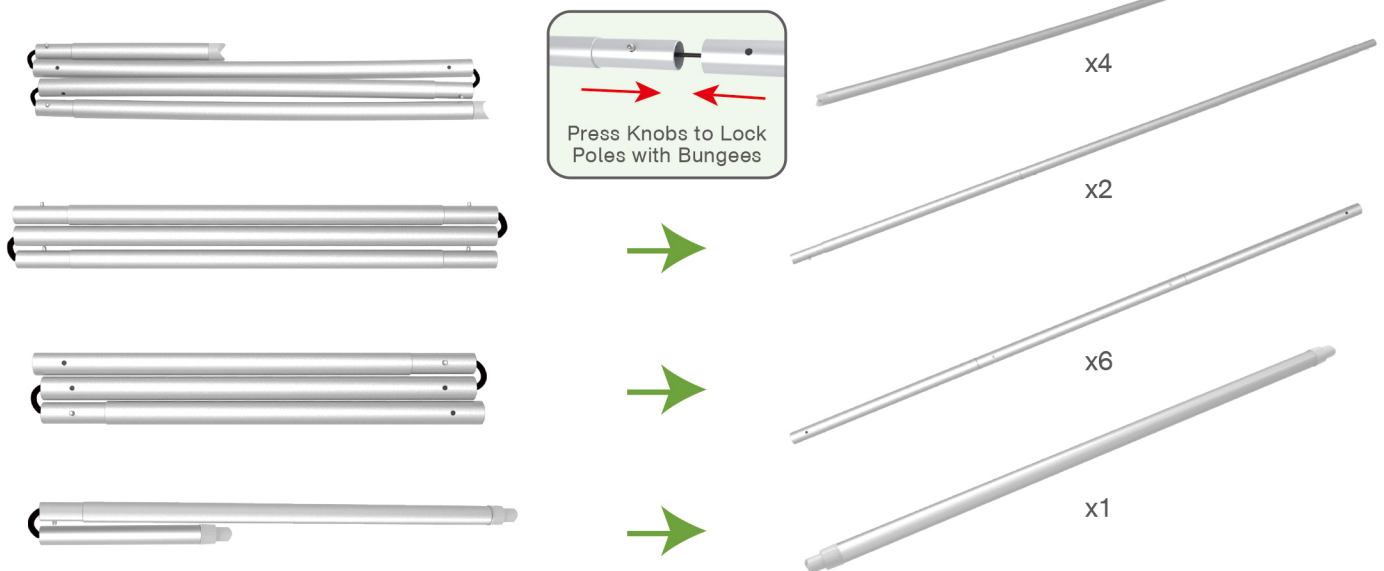
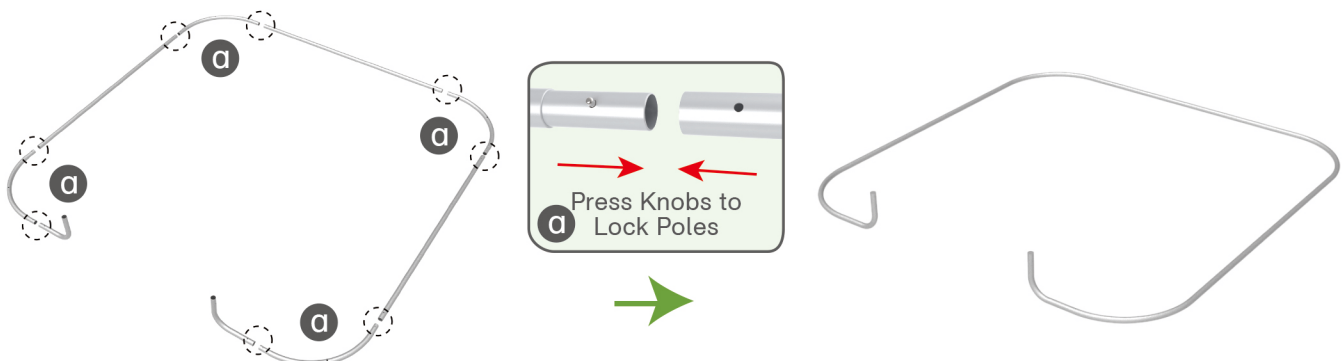


★ One Tool (Hex Wrench) **STEPS****(1) Hardware****(2) Printed Graphic Fabric Banner (Optional)****STEP 01**

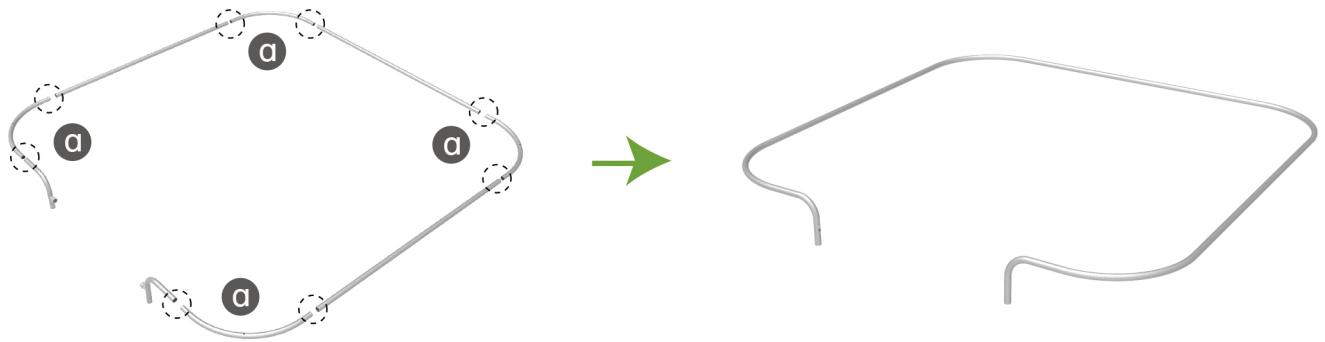
Connect to make long poles according to labelings.

**STEP 02**

Connect long poles with corner poles according to labelings.

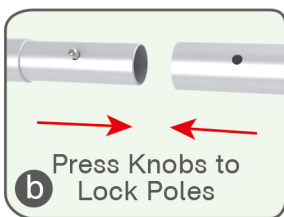
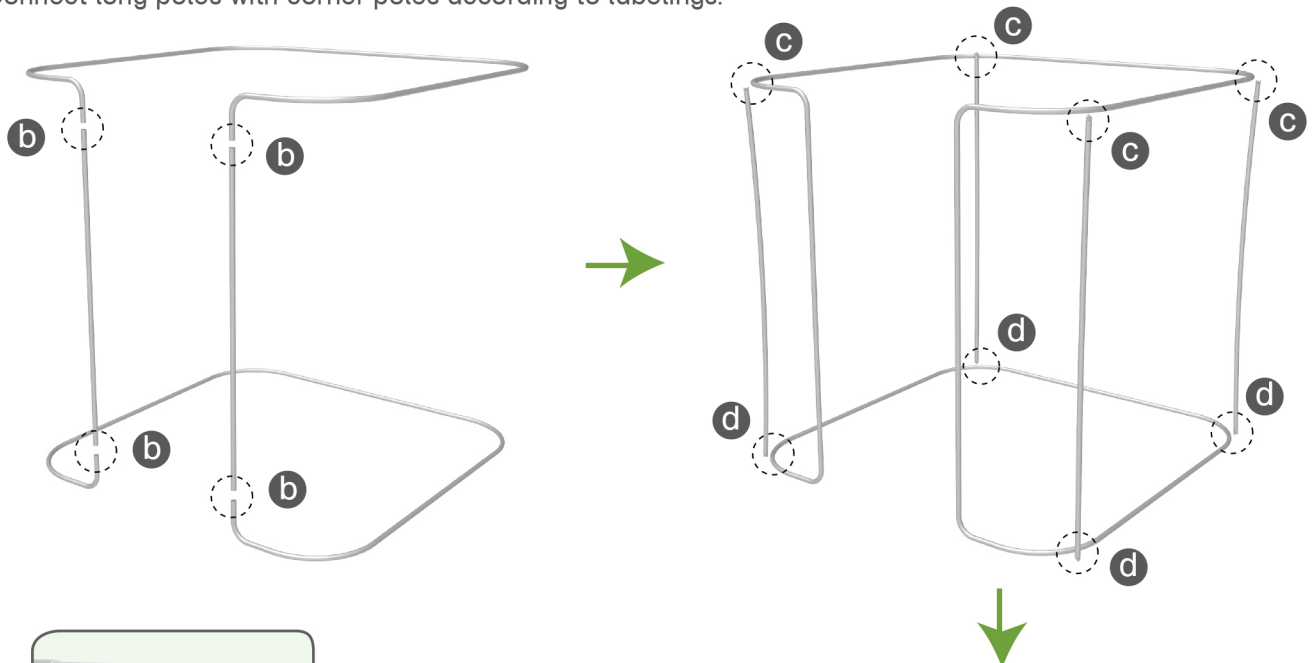


STEPS

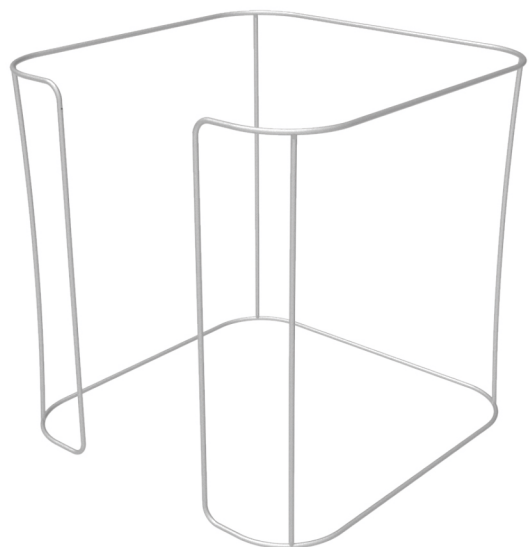
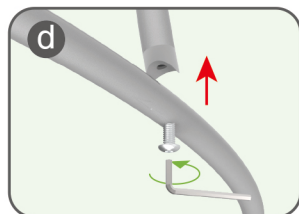
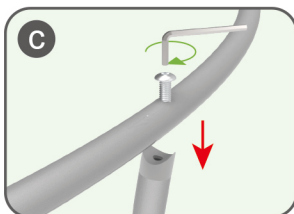


STEP 03

Connect long poles with corner poles according to labelings.



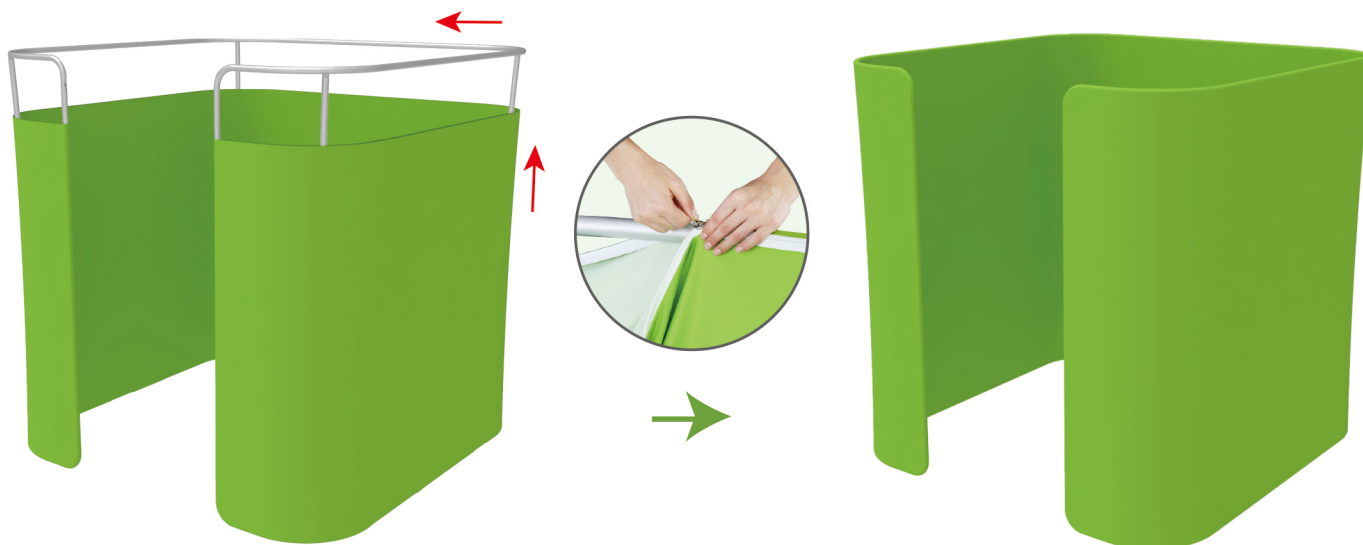
Connect support poles onto frame with screws.



STEPS

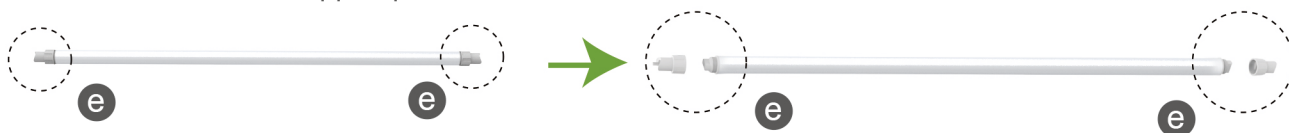
STEP 04

Slide fabric banner on frame from bottom and zip up at top.

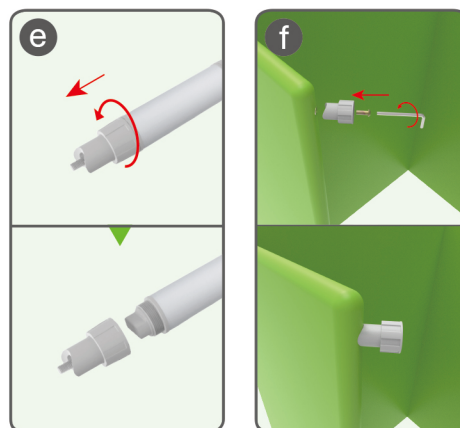
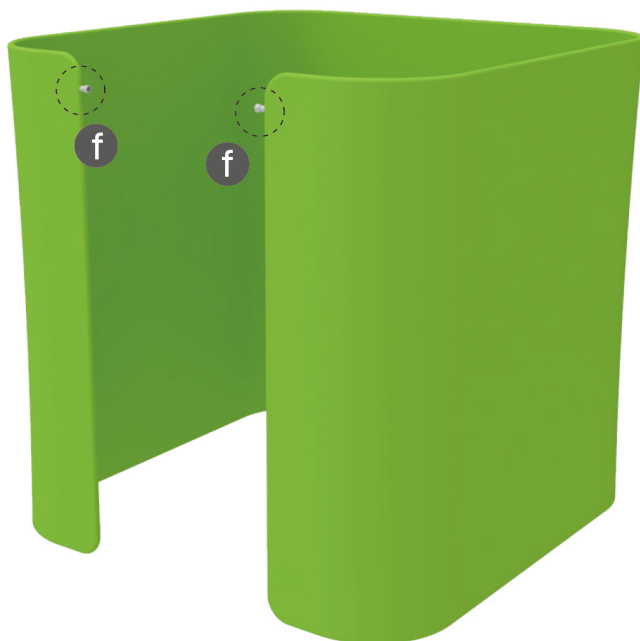


STEP 05

① Disassemble slots from support pole.

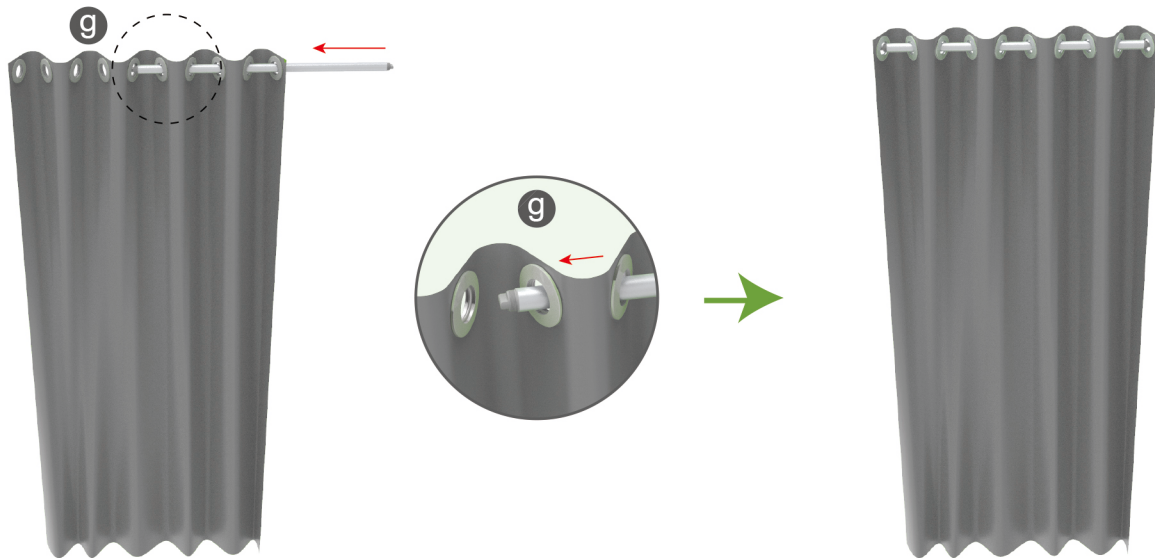


② Install slots onto enclosure.



STEPS

- ③ Slip support pole through curtain with grommets.



- STEP 06** Screw support pole with curtain into slots.

