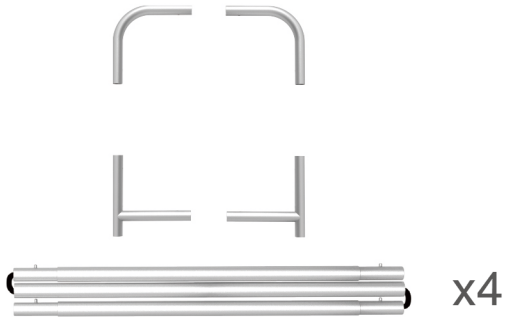
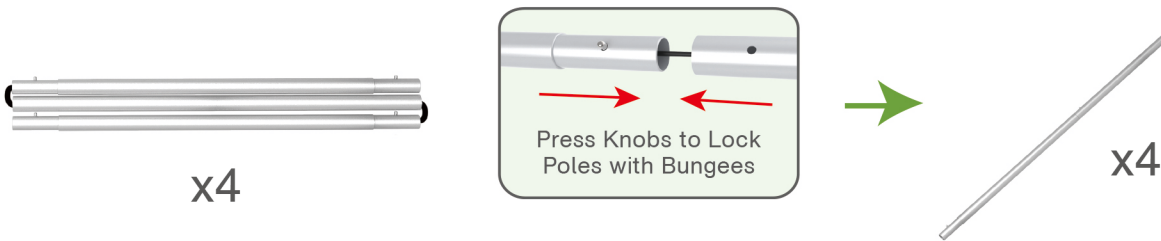
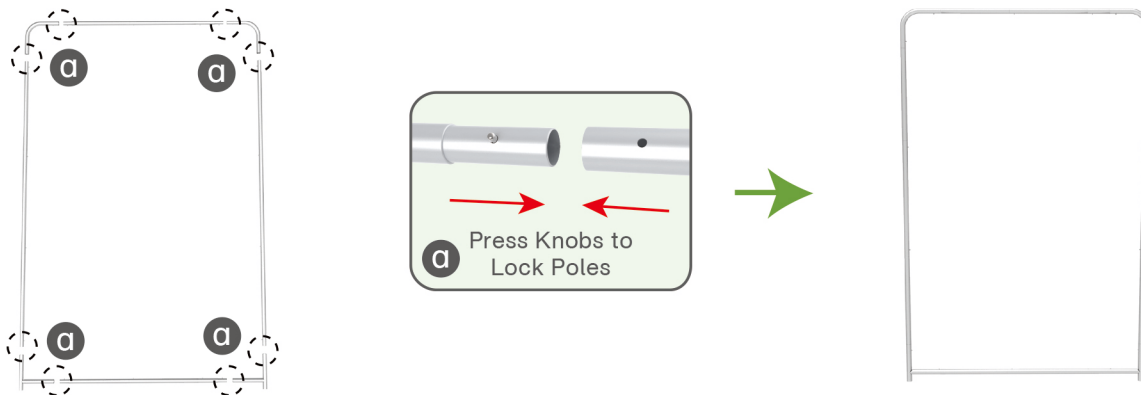


STEPS

(1) Hardware

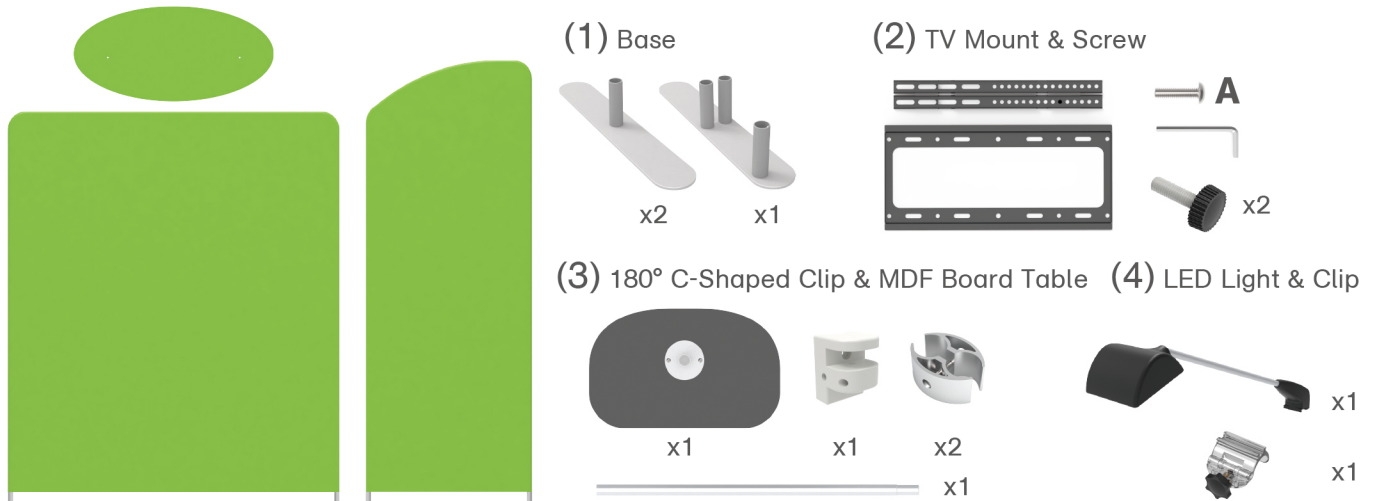


(2) Printed Graphic Fabric Banner (Optional)

**STEP 01** Connect to make long poles according to labelings.**STEP 02** Connect long poles with corner poles according to labelings.**STEP 03** Slide fabric banner on frame from top and zip up at bottom.

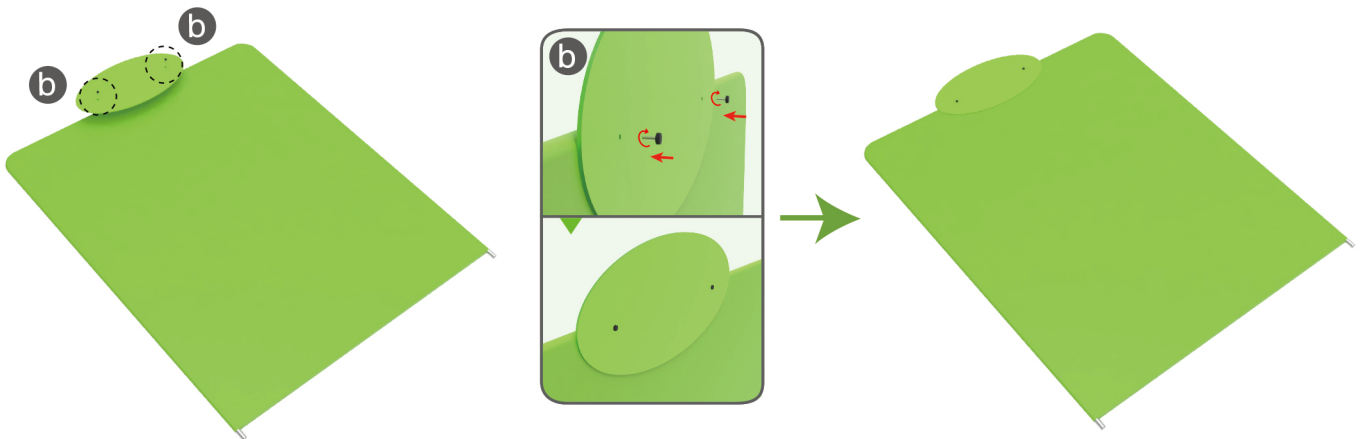
STEPS

Booth Set Assembly



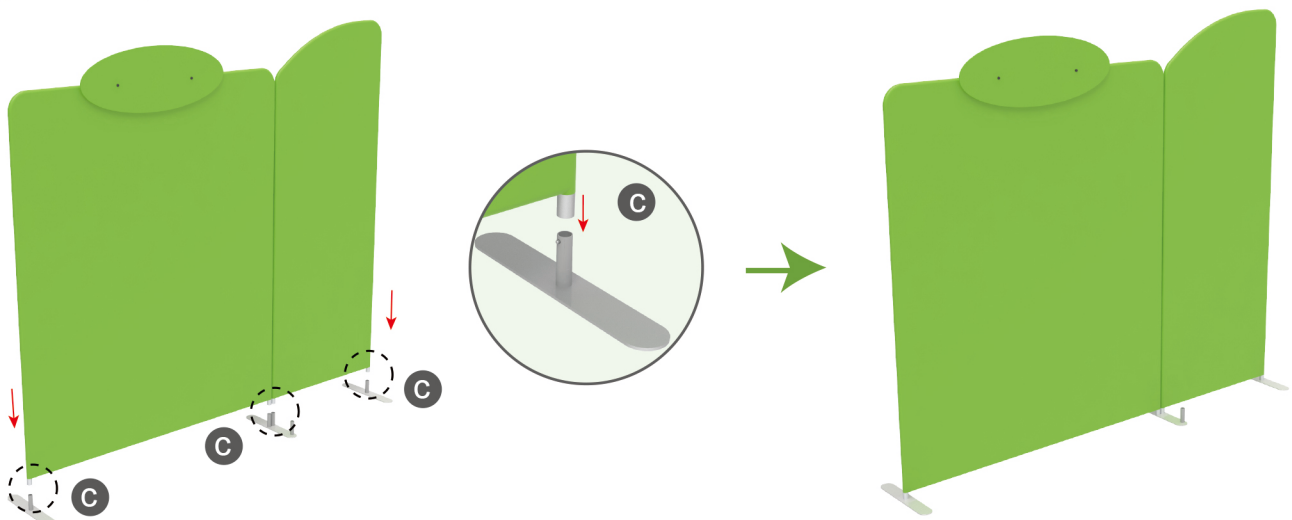
STEP 01

Screw header onto display stand with thumb screws.



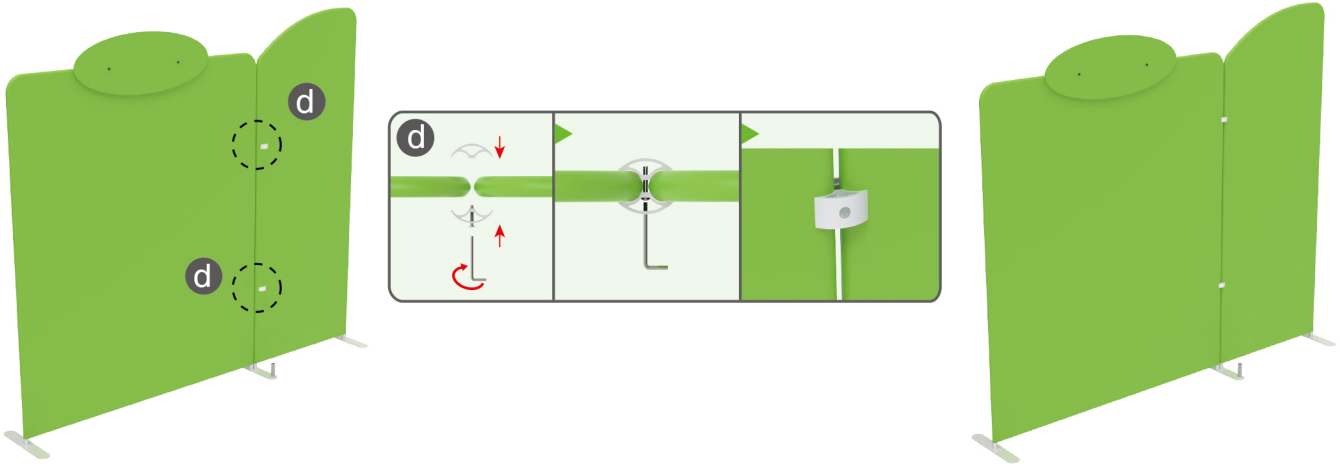
STEP 02

Insert display stands onto feet by pressing their knobs.

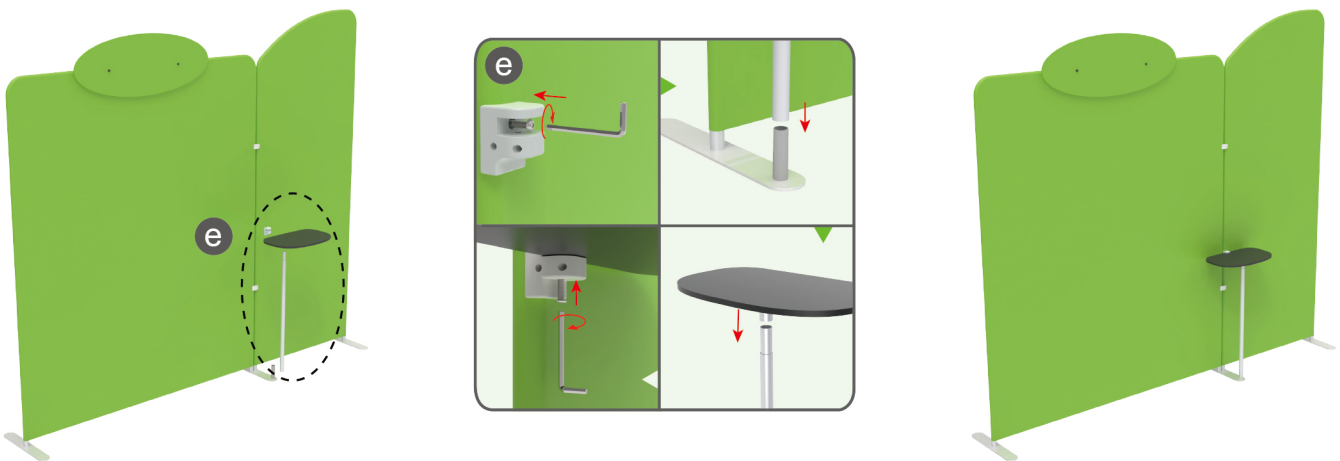


PARTS

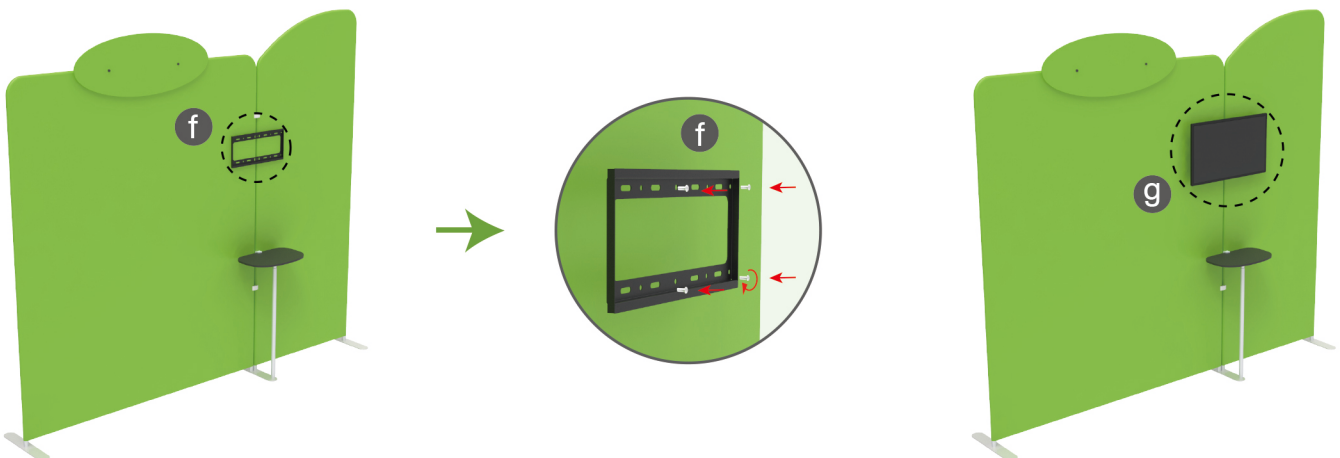
STEP 03 Interconnect display stands with C-shaped clips.



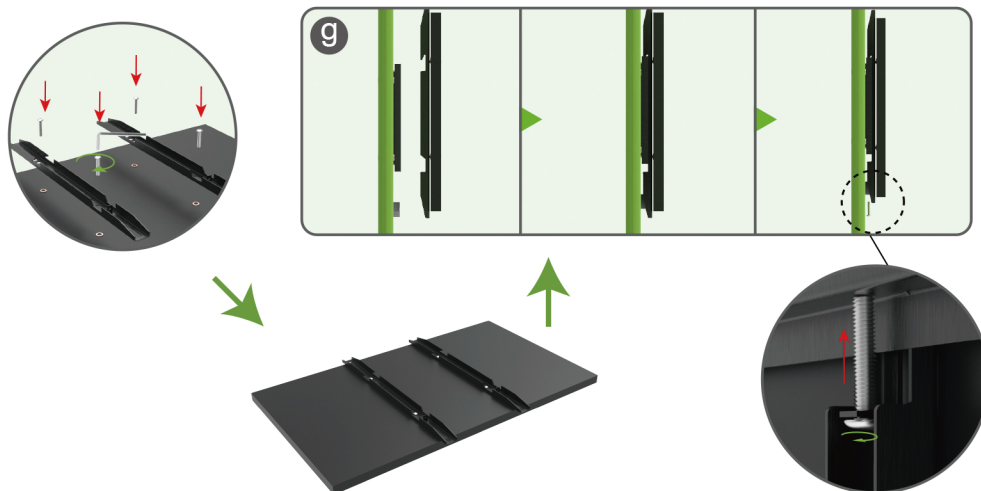
STEP 05 Insert pole into base, screw clamp with hex wrench, place MDF board onto pole & insert into clamp with screw.



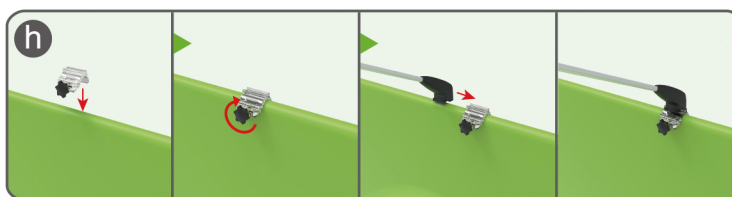
STEP 06 Screw TV mount with hex wrench.



PARTS



STEP 06 Screw light clips at top of display stands, slide lights onto them and adjust their direction.



10X10FT-BOOTH-02



10X10FT-BOOTH-05