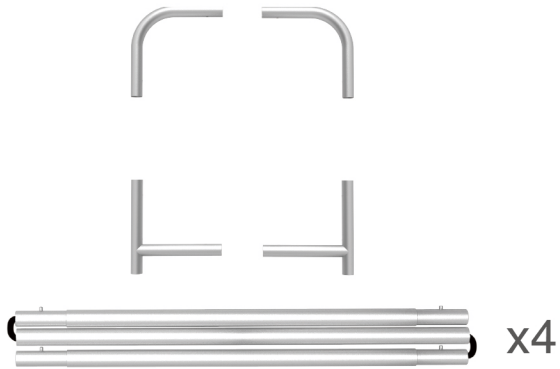
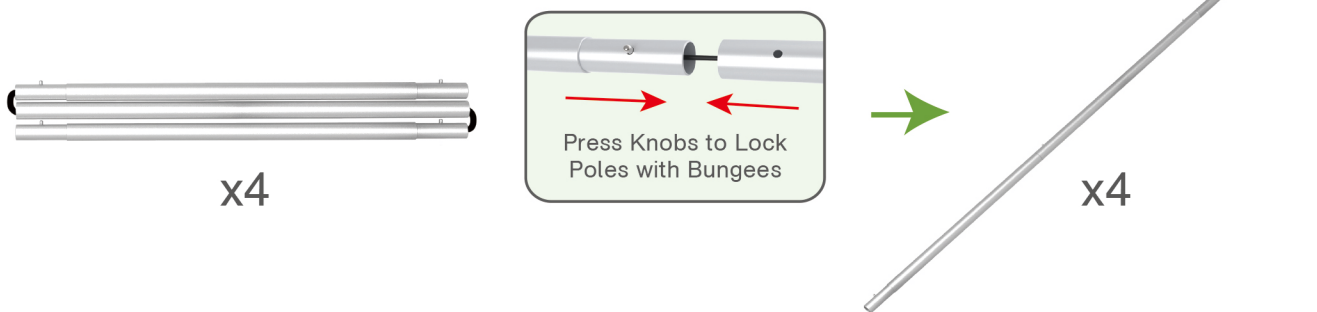
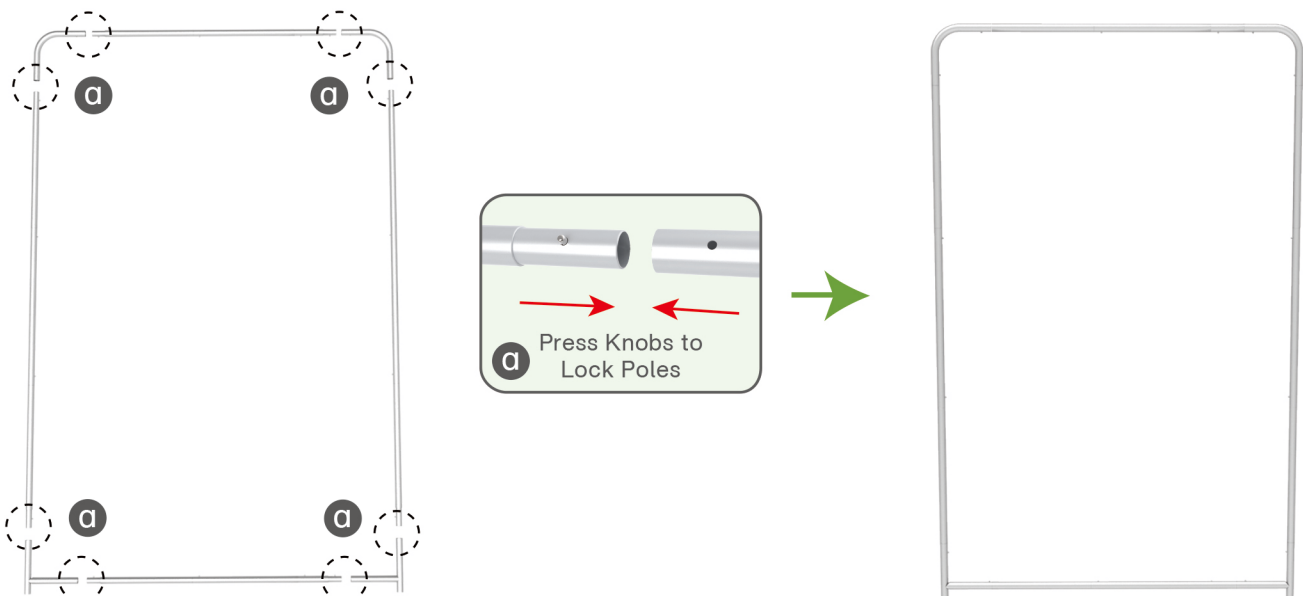


STEPS

(1) Hardware



(2) Printed Graphic Fabric Banner

**STEP 01** Connect to make long poles according to labelings.**STEP 02** Connect long poles with corner poles according to labelings.

STEPS

STEP 03 Slide fabric banner on frame from top and zip up at bottom.



(1) Hardware



(2) Printed Graphic Fabric Banner

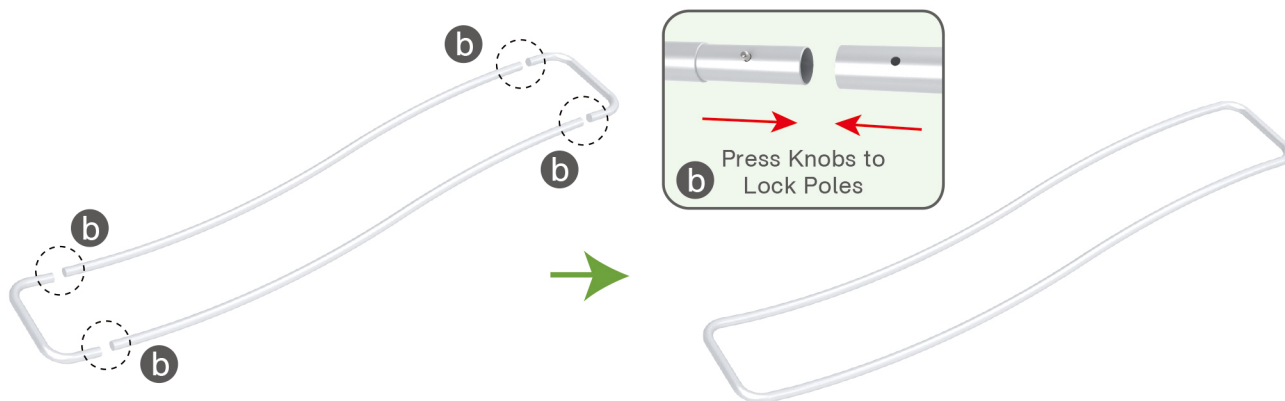


STEP 01 Connect to make long poles according to labelings.

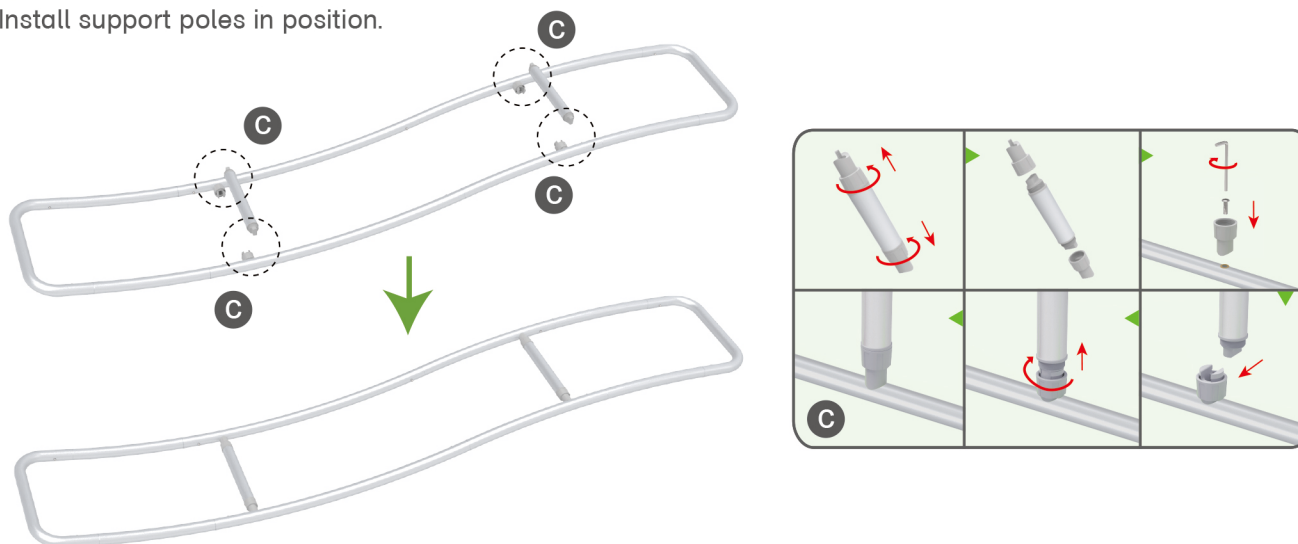


STEPS

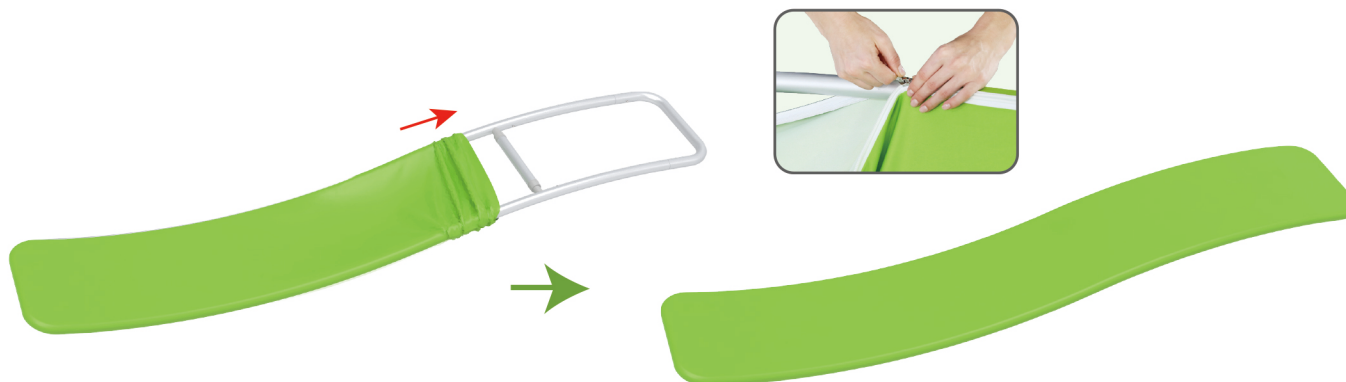
STEP 02 Connect long poles with corner poles according to labelings.

**STEP 03**

Install support poles in position.

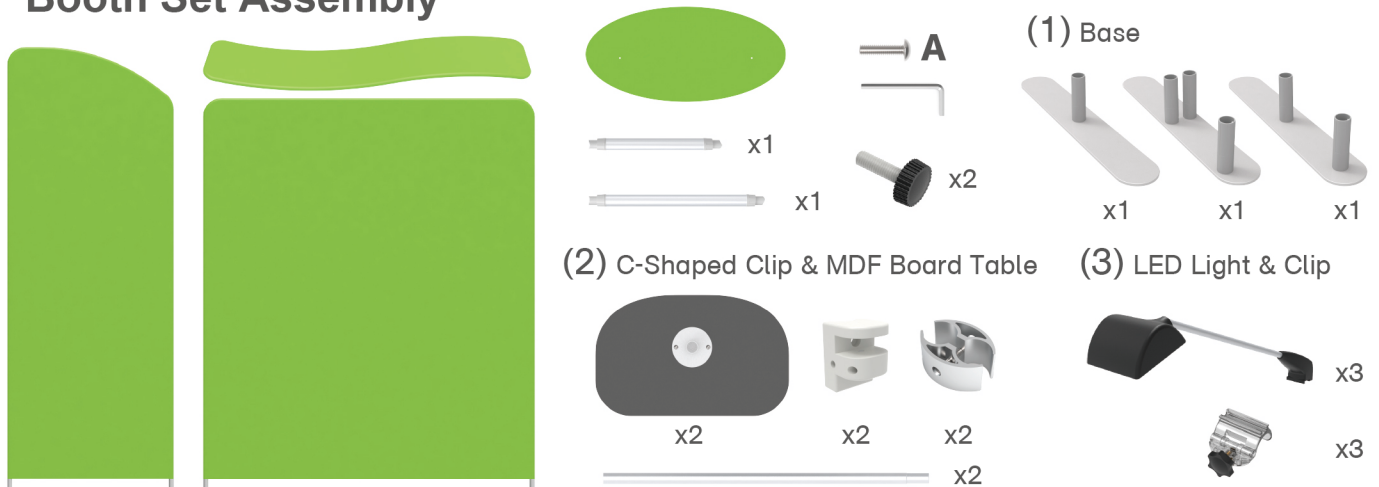
**STEP 04**

Slide fabric banner on frame from left and zip up at right.

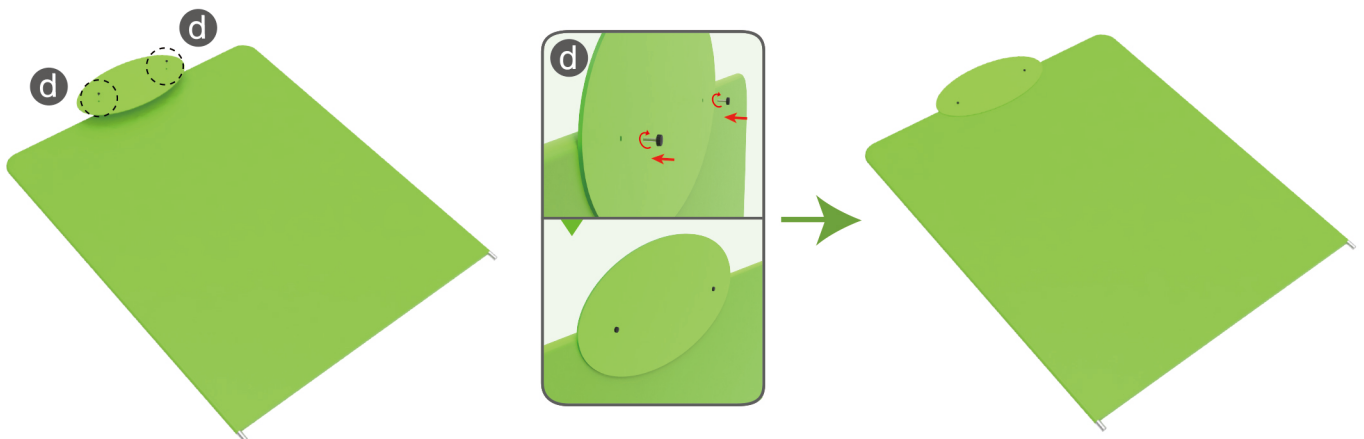


STEPS

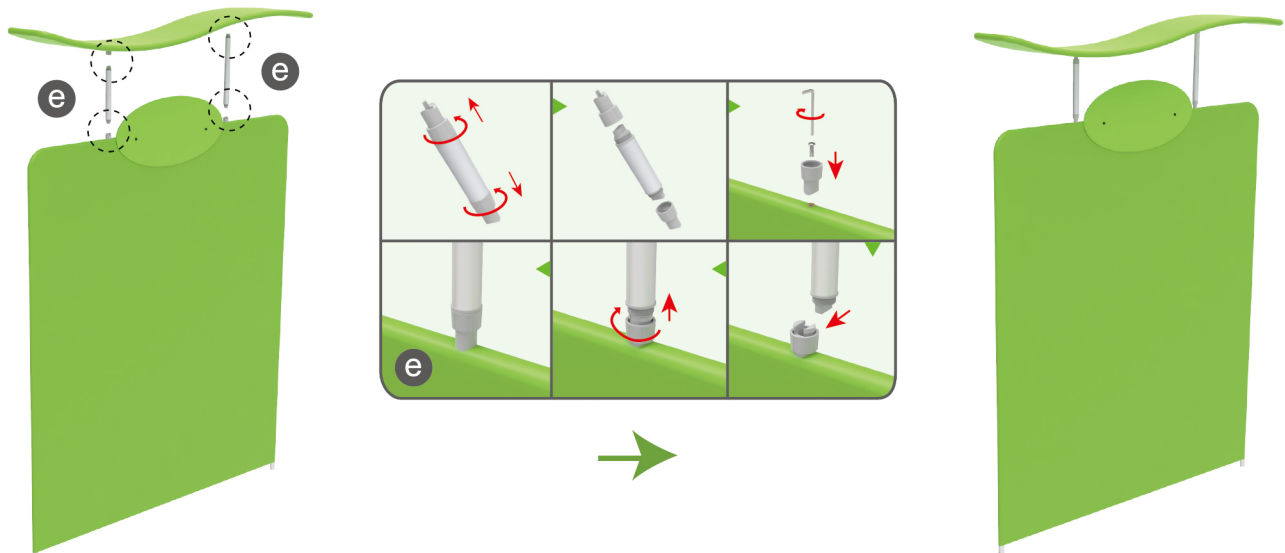
Booth Set Assembly



STEP 01 Screw header onto display stand with thumb screws.

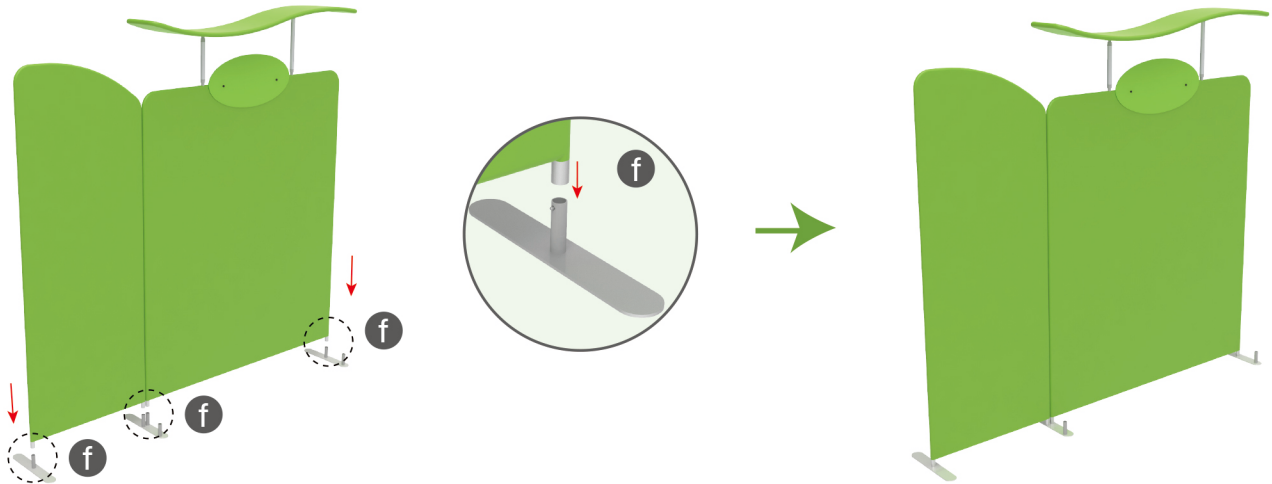
**STEP 02**

Connect canopy and display stand with support poles.

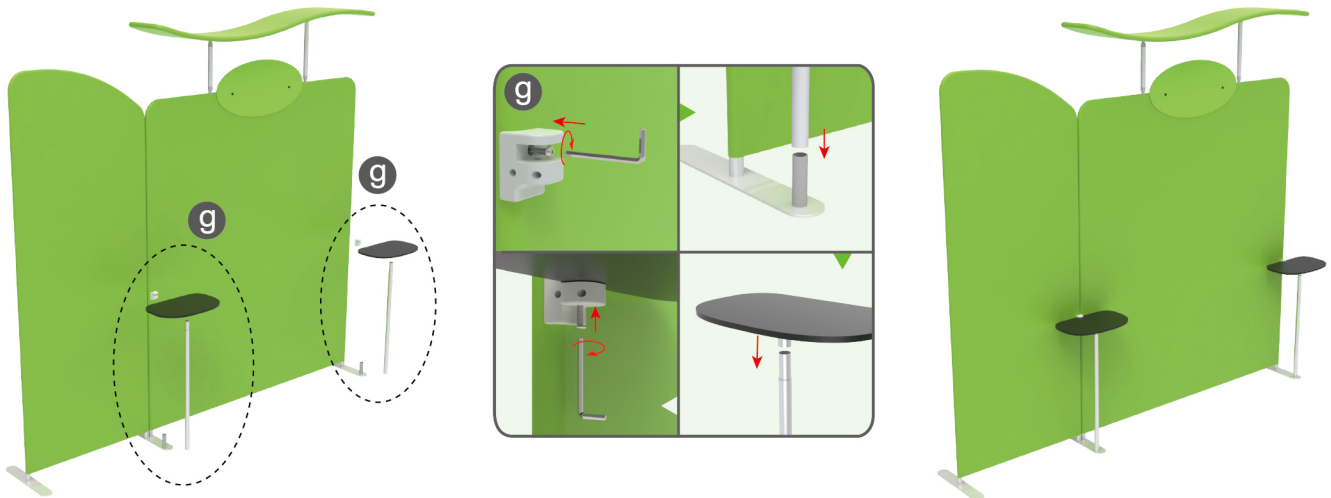


STEPS

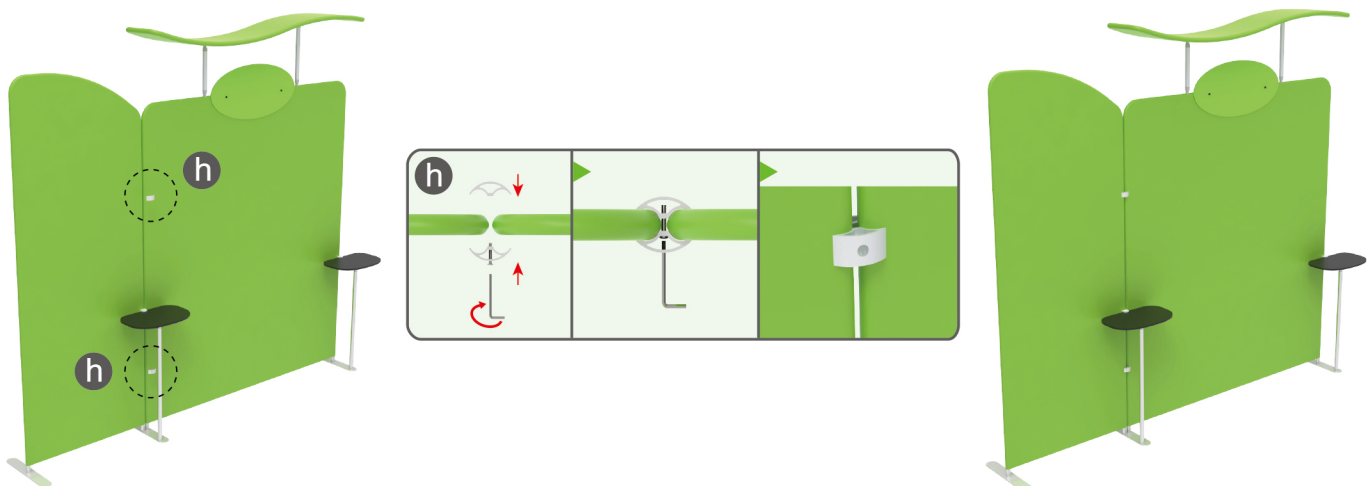
STEP 03 Insert display stands onto feet by pressing their knobs.

**STEP 04**

Insert pole into base, screw clamp with hex wrench, place MDF board onto pole & insert into clamp with screw.

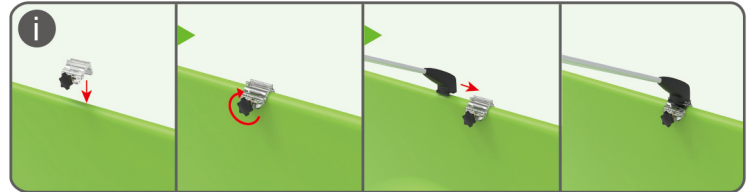


STEP 05 Interconnect display stands with C-shaped clips.



STEPS

STEP 06 Screw light clips at top of display stands, slide lights onto them and adjust their direction.



10X10FT-BOOTH-R