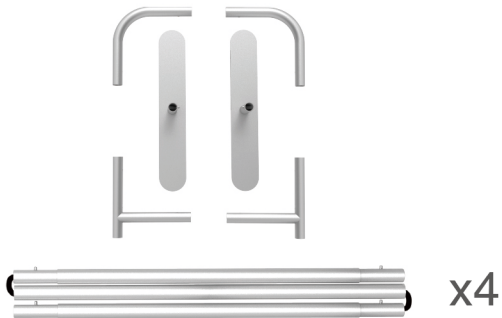
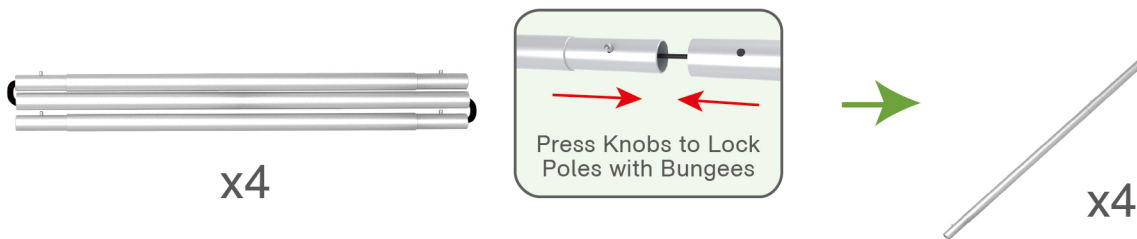
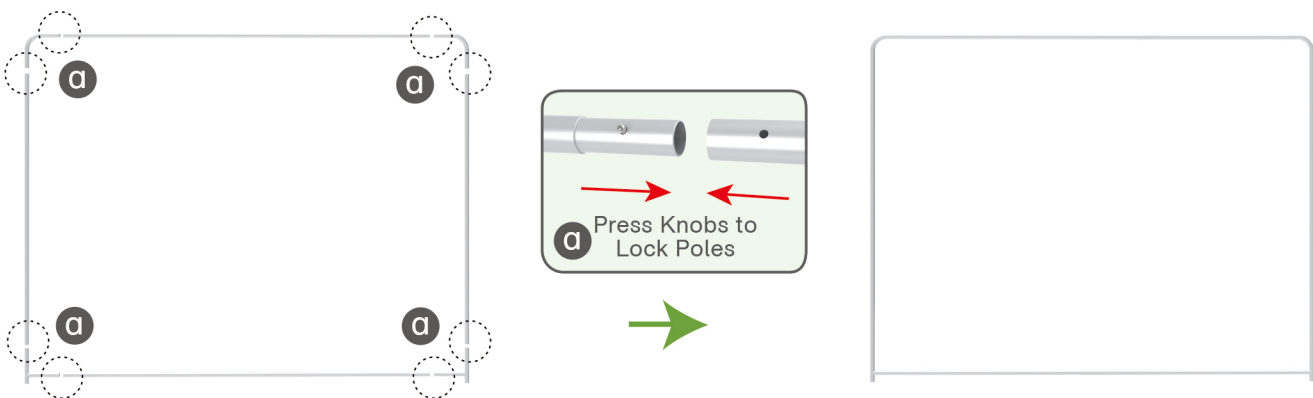
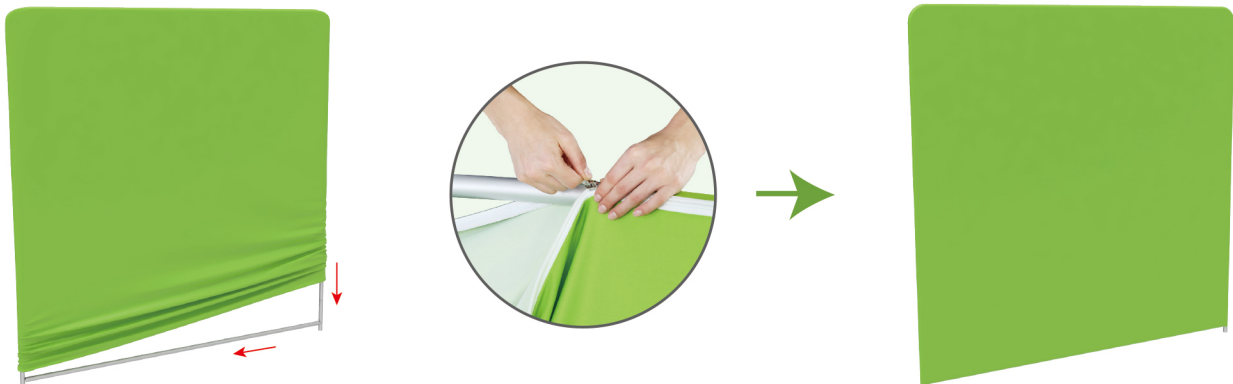


STEPS

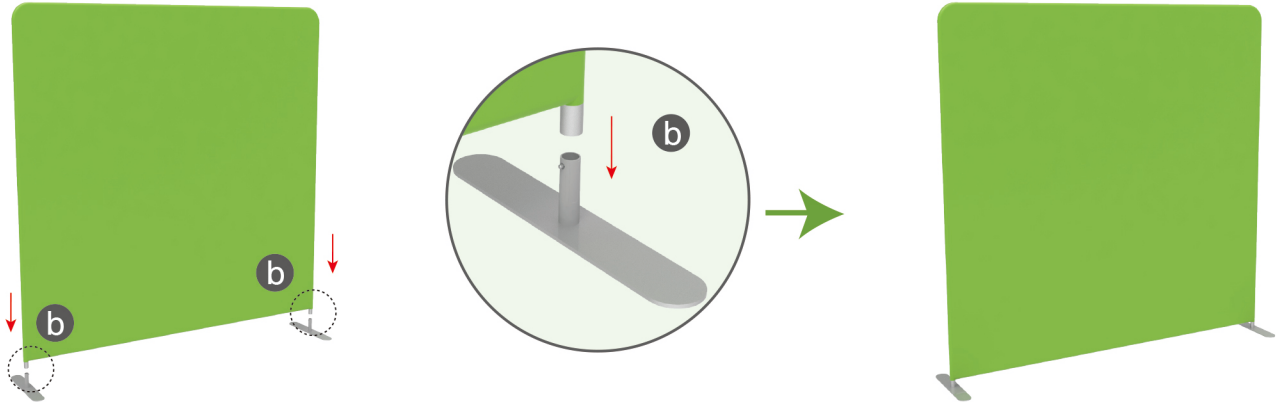
(1) Hardware



(2) Printed Graphic Fabric Banner

**STEP 01** Connect to make long poles according to labelings.**STEP 02** Connect long poles with corner poles according to labelings.**STEP 03** Slide fabric banner on frame from top and zip up at bottom.

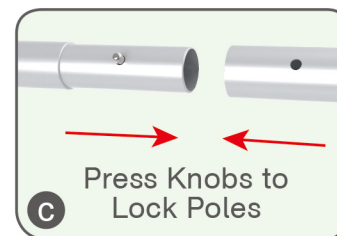
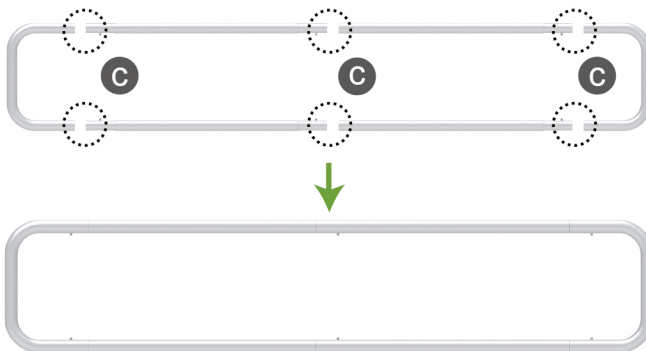
STEPS

STEP 04 Insert display stands onto feet by pressing their knobs.

(1) Hardware

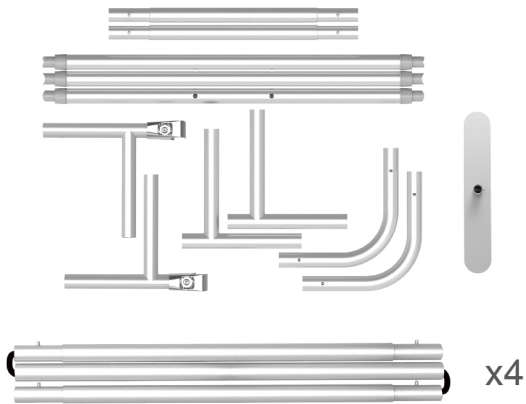


(2) Printed Graphic Fabric Banner

**STEP 01** Connect poles according to labelings.**STEP 02** Slide fabric banner on frame from left and zip up at right.

STEPS

(1) Hardware

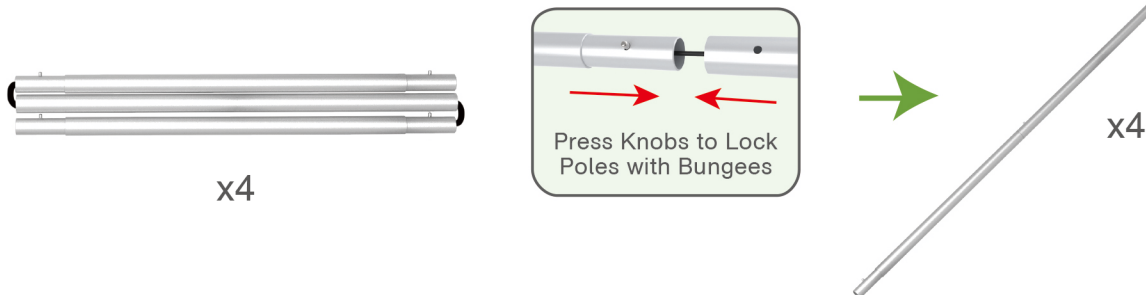


(2) Printed Graphic Fabric Banner



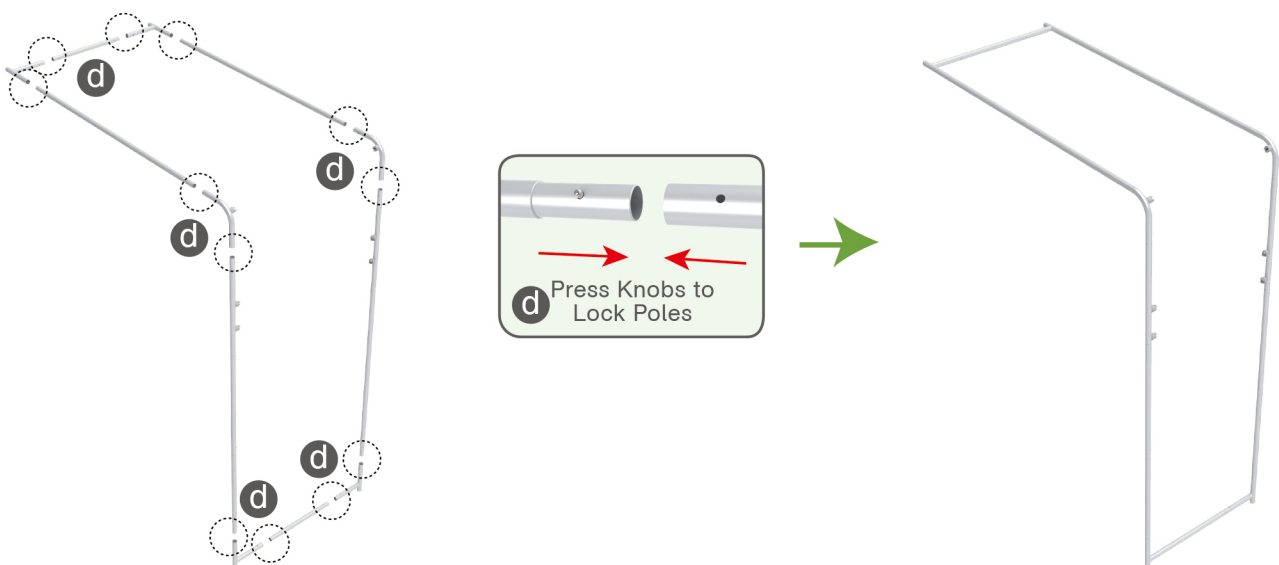
STEP 01

Connect to make long poles according to labelings.

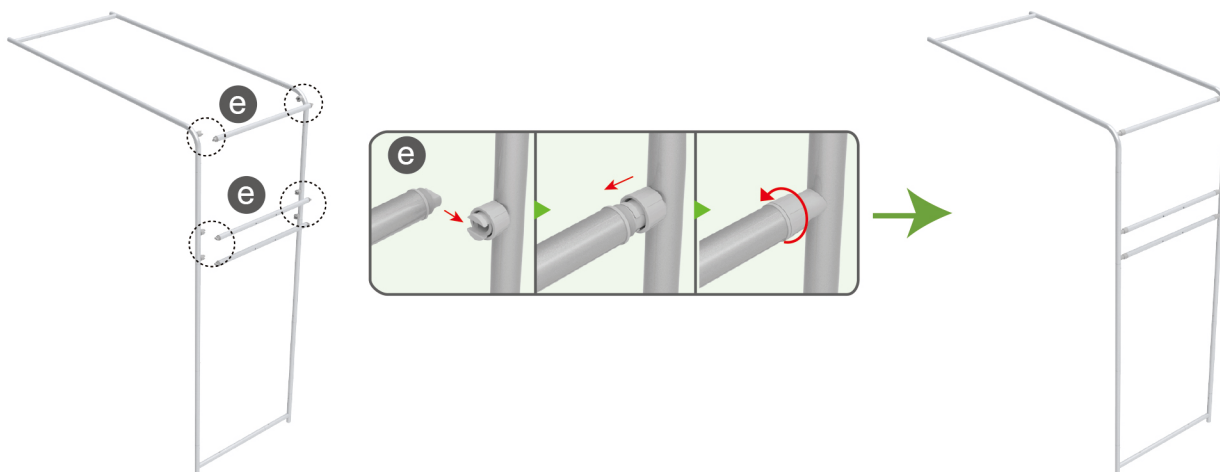
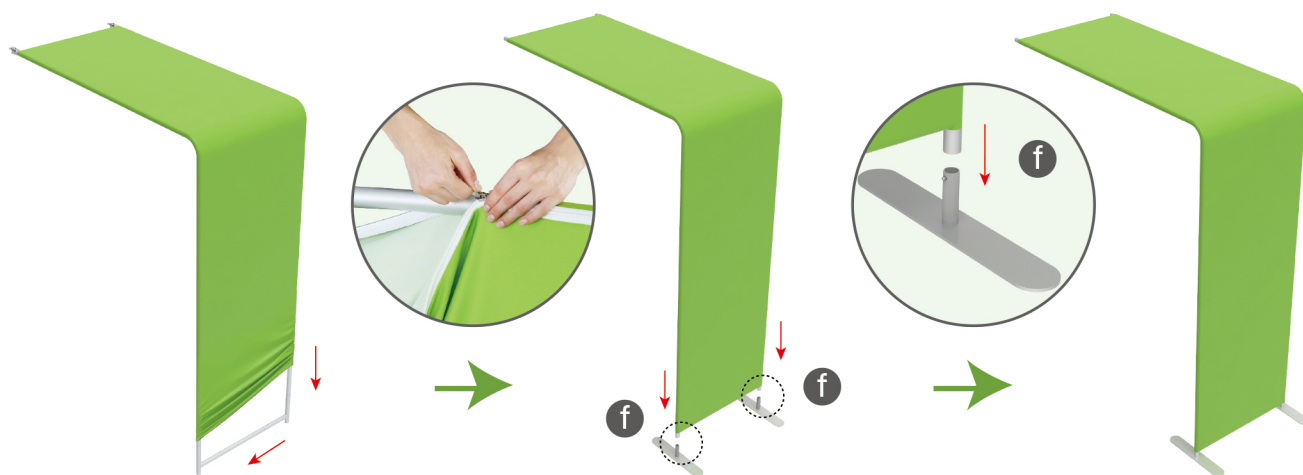


STEP 02

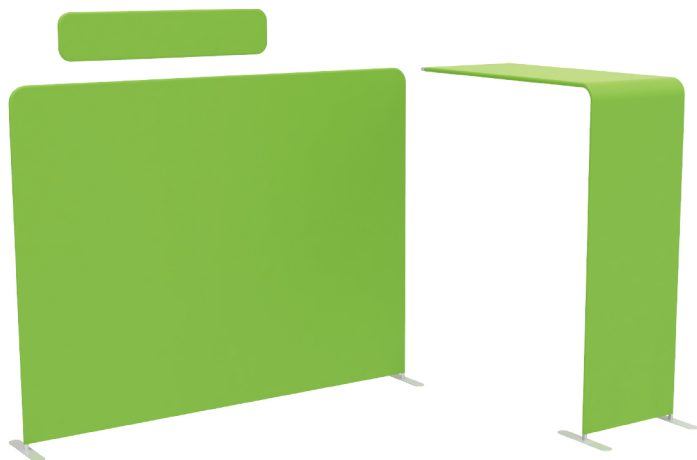
Connect long poles with corner poles according to labelings.



STEPS

STEP 03 Install cross bars in position.**STEP 04** Slide fabric banner on frame from top and zip up at bottom, insert display stands onto feet by pressing their knobs.

Booth Set Assembly



(1) 180° C-Shaped Clip



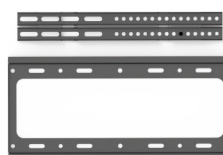
x2

(2) Arm Clip

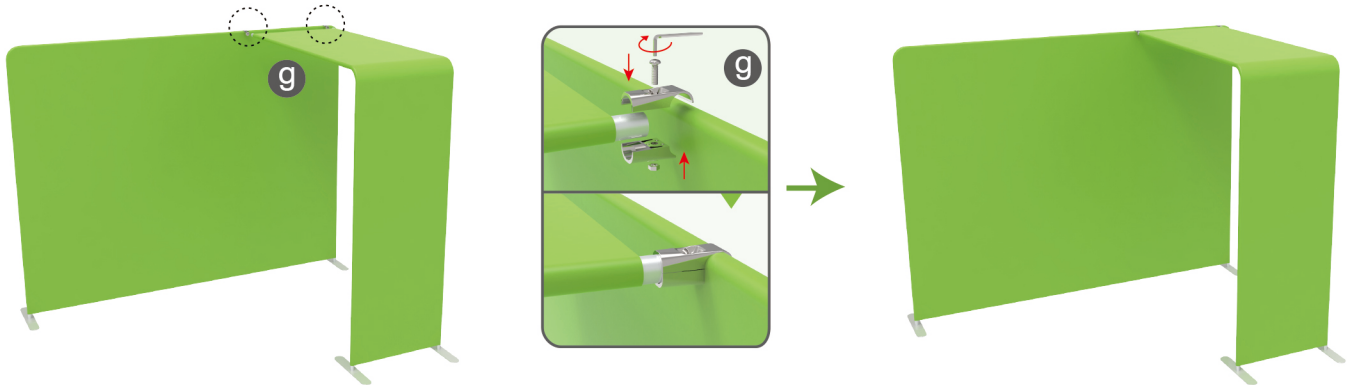
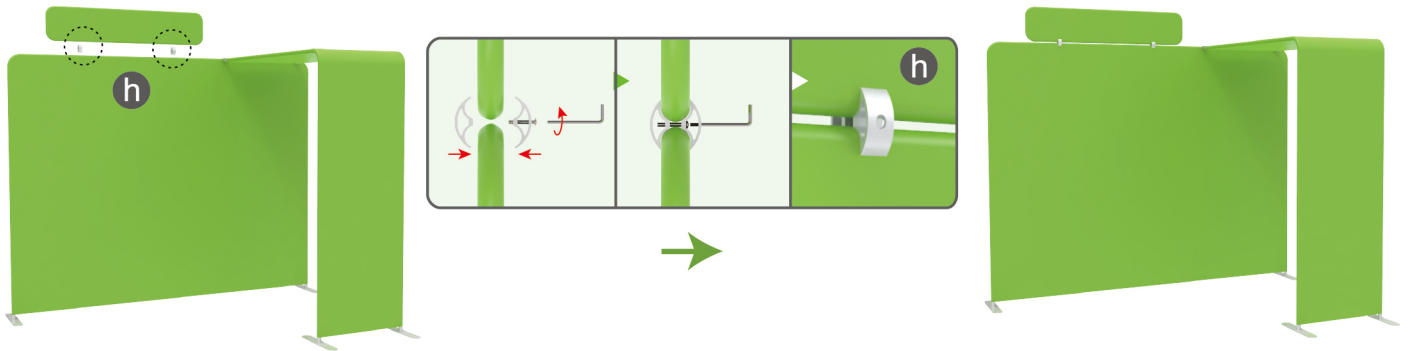
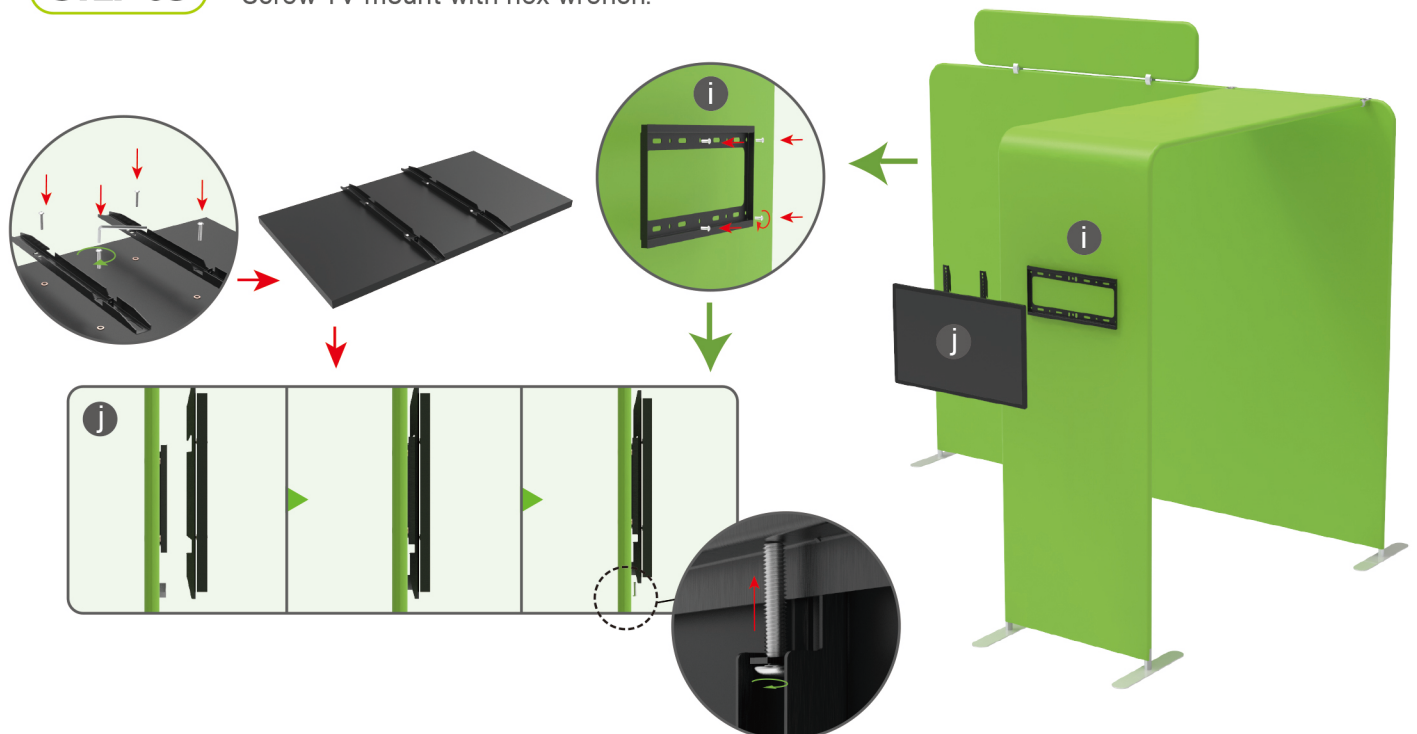


x2

(3) TV Mount



STEPS

STEP 01 Connect display stands with arm clips.**STEP 02** Interconnect display stands with C-shaped clips.**STEP 03** Screw TV mount with hex wrench.

STEPS**10X10FT-BOOTH-M**