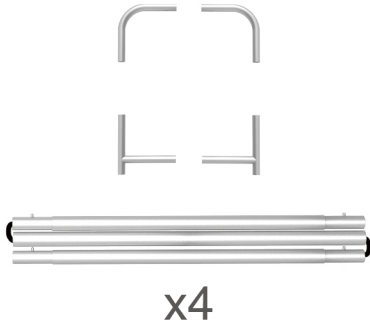


STEPS

(1) Hardware

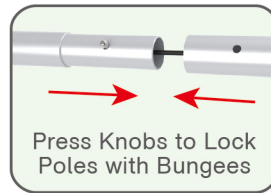


(2) Printed Graphic Fabric Banner



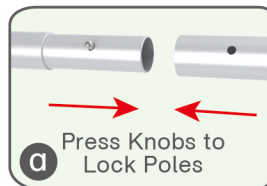
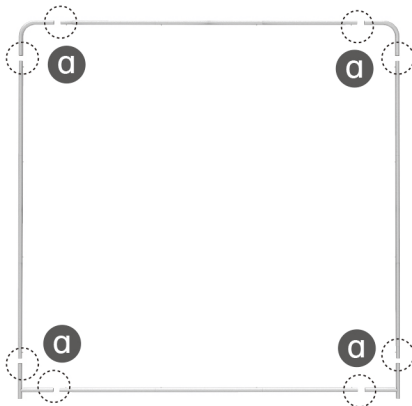
STEP 01

Connect to make long poles according to labelings.



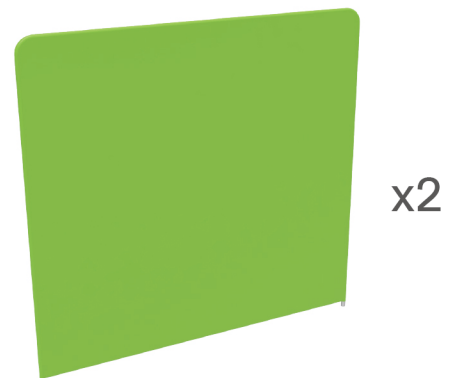
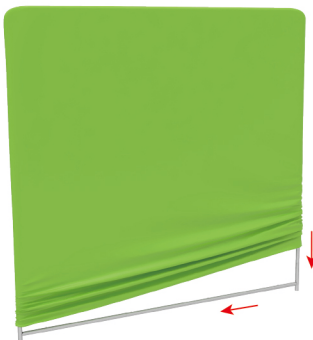
STEP 02

Connect long poles with corner poles according to labelings.



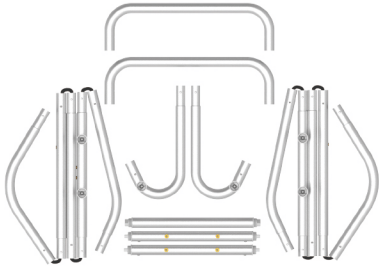
STEP 03

Slide fabric banner on frame from top and zip up at bottom.



STEPS

(1) Hardware

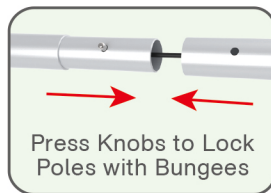


(2) Printed Graphic Fabric Banner



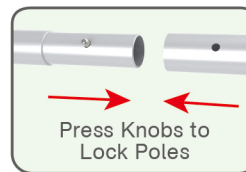
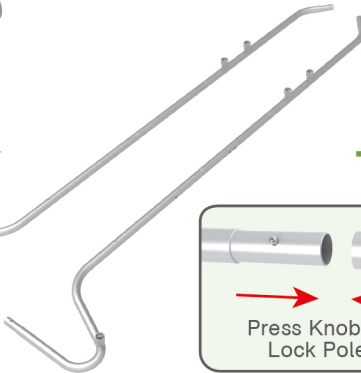
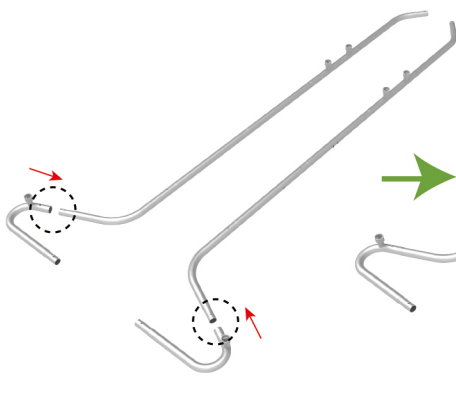
STEP 01

Connect to make long poles according to labelings.



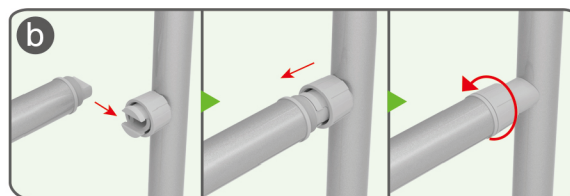
STEP 02

Connect long poles with corner poles according to labelings.



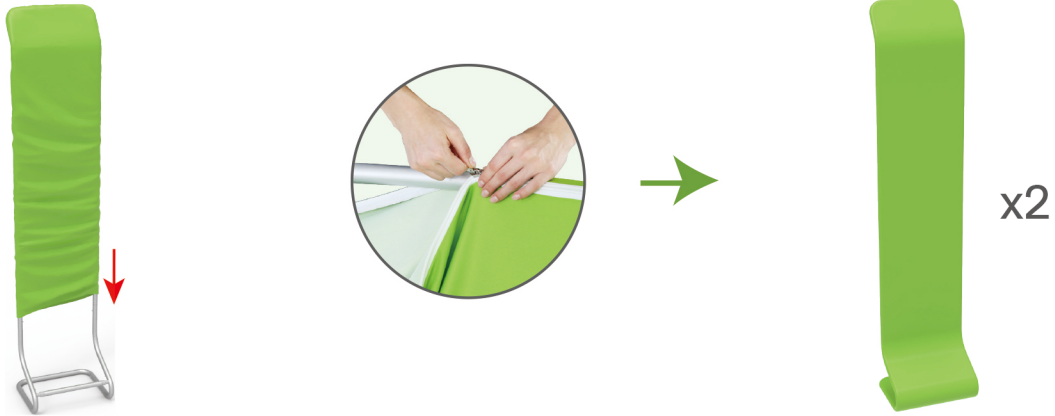
STEP 03

Install cross bars in position.

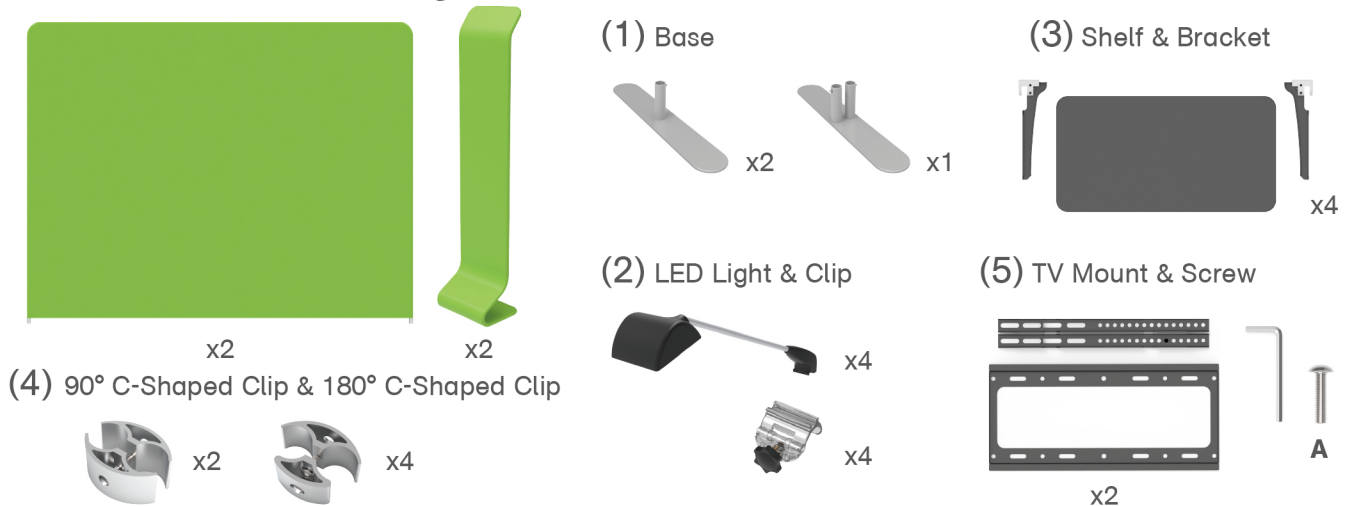
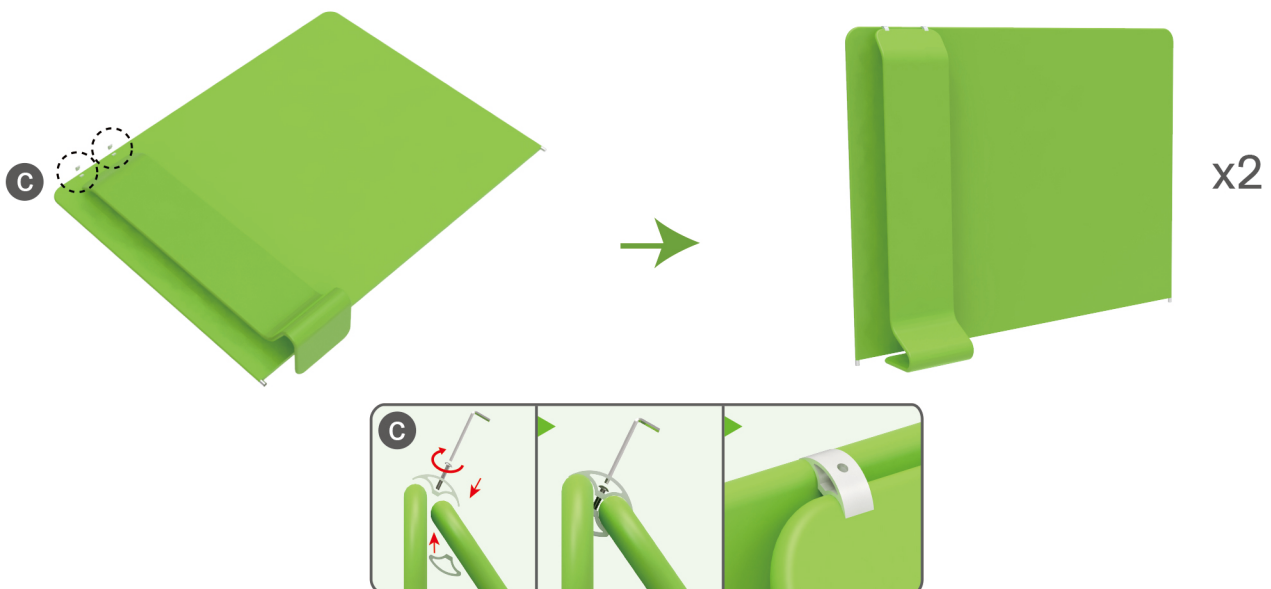


★ One Tool (Hex Wrench)

STEPS

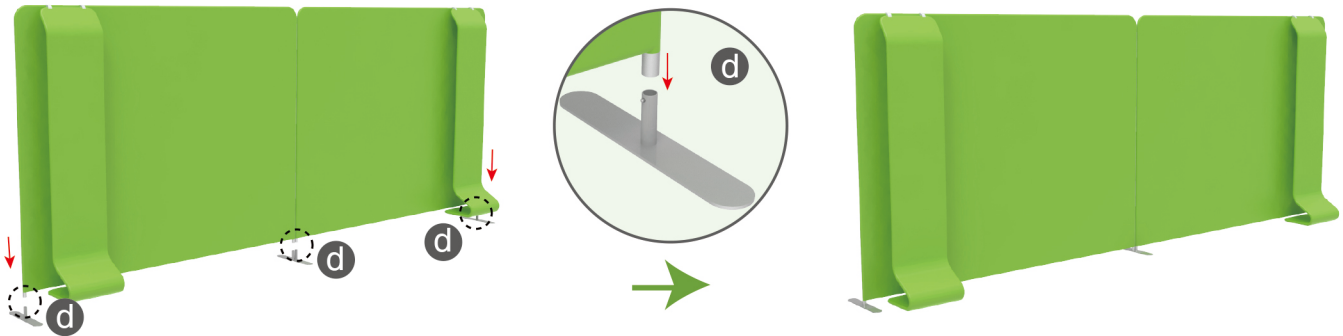
STEP 04 Slide fabric banner on frame from top and zip up at bottom.

Booth Set Assembly

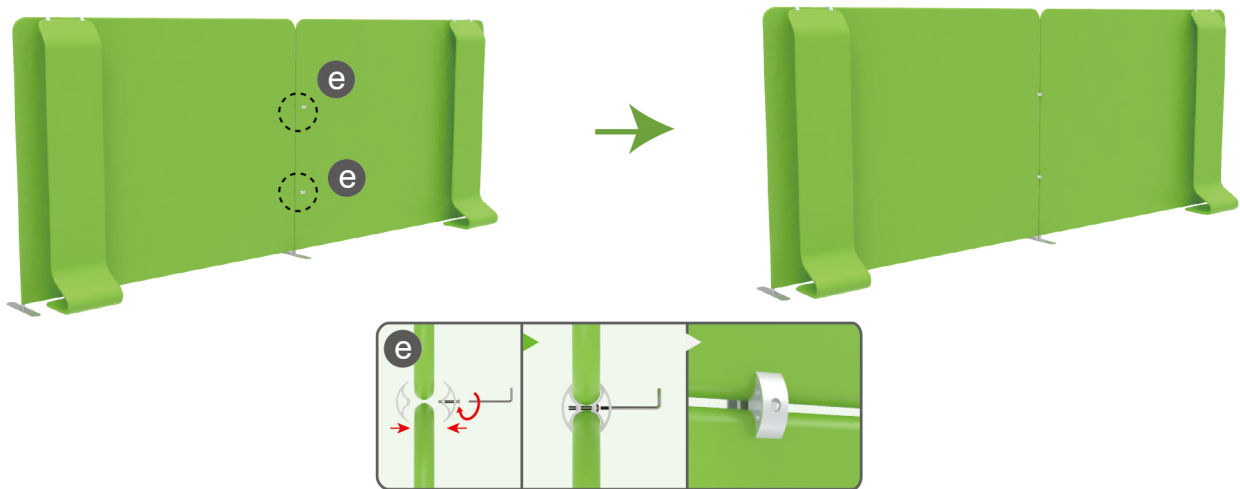
**STEP 01** Interconnect display stands with C-shaped clips.

STEPS

STEP 02 Insert display stands onto feet by pressing their knobs.

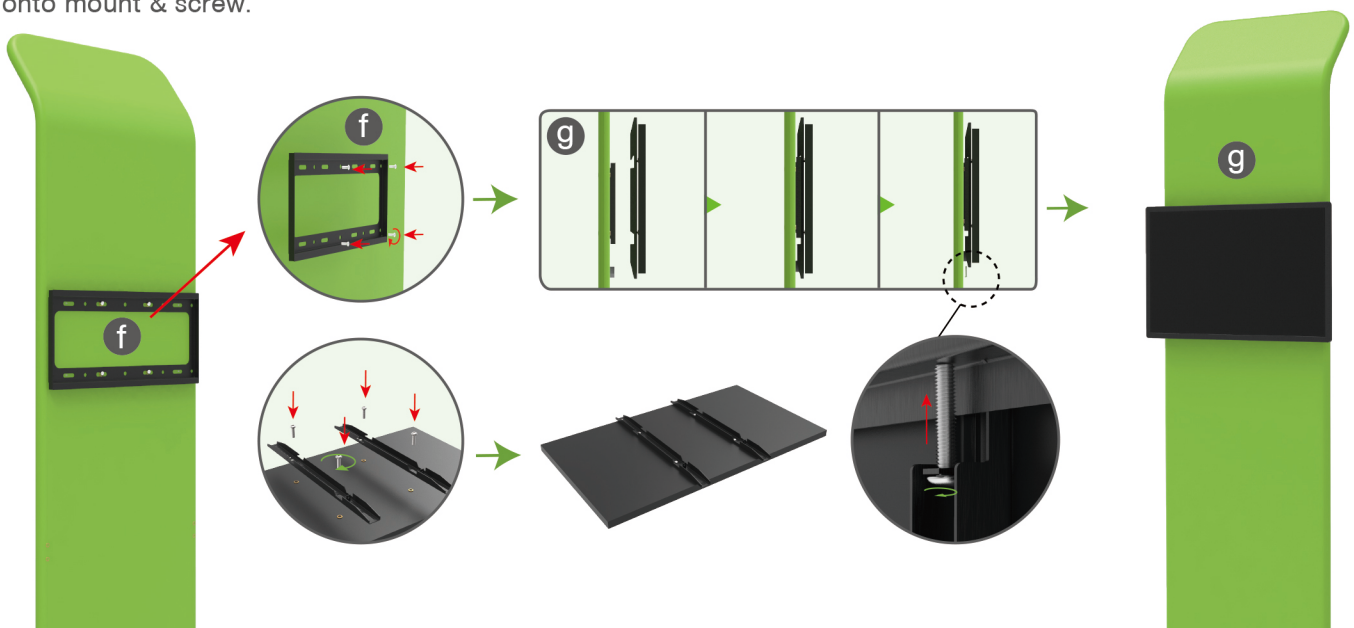


STEP 03 Interconnect display stands with C-shaped clips.



STEP 04

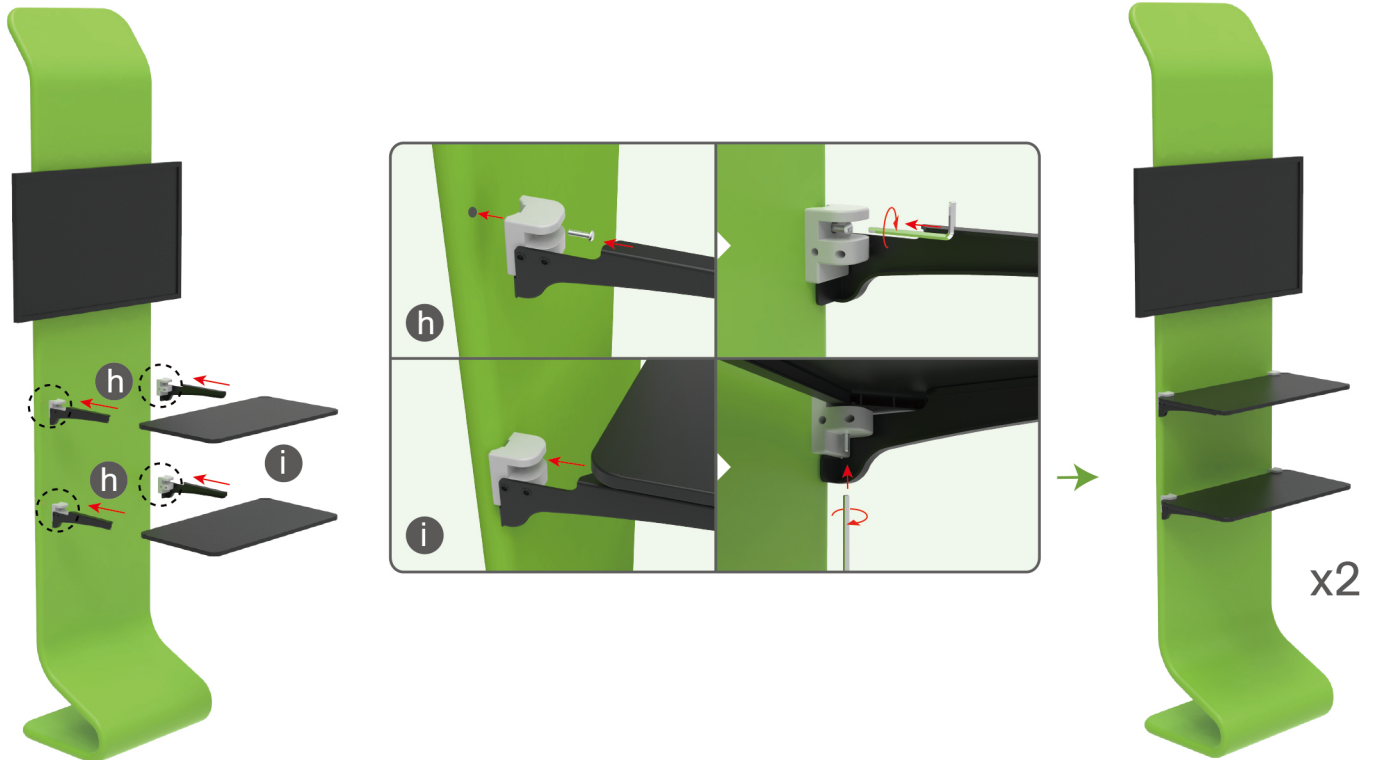
Screw TV mount onto display stand & support brackets onto TV's back with hex wrench, hang TV onto mount & screw.



STEPS

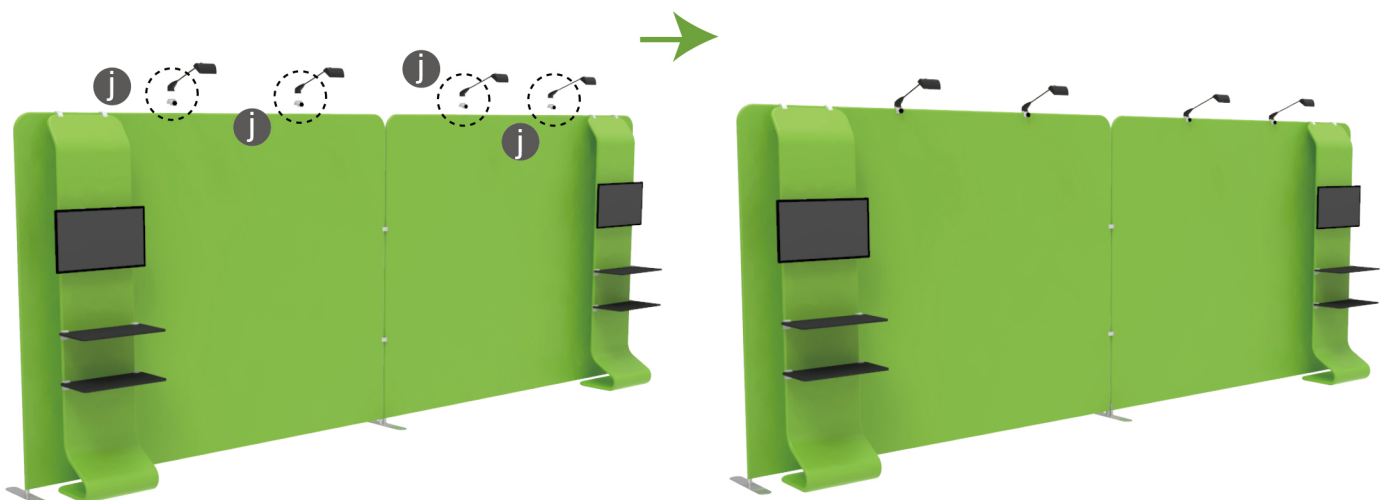
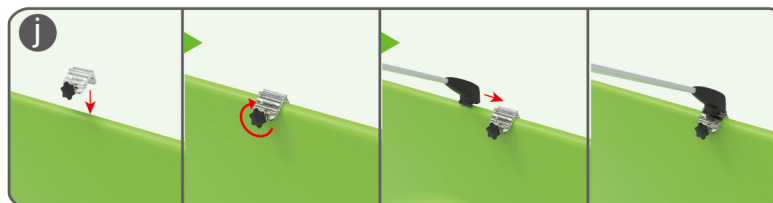
STEP 05

Screw brackets onto display stand with hex wrench, insert shelves into slots.



STEP 06

Screw light clips at top of display stands, slide lights onto them and adjust their direction.



STEPS**10X20FT-BOOTH-I**