

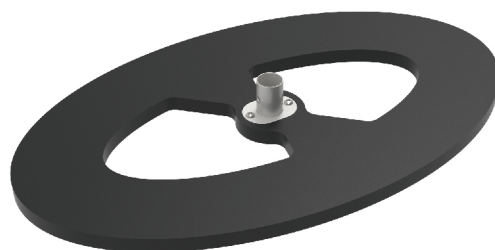
★ One Tool (Hex Wrench) 

STEPS

(1) Aluminum pole



(2) MDF panel



(3) Fabric banner

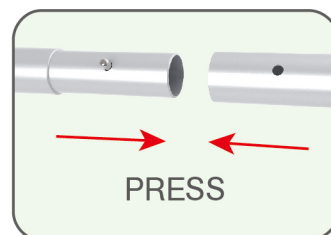
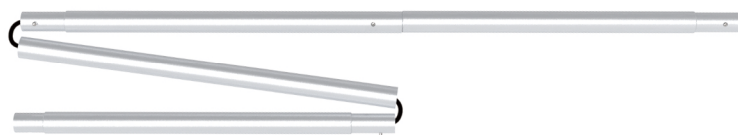


(4) Optional Accessory



STEP 01

To assemble the poles according to labelling



STEPS

STEP 02

To put the bottom MDF panel upside down and clip the fabric banner to the slot

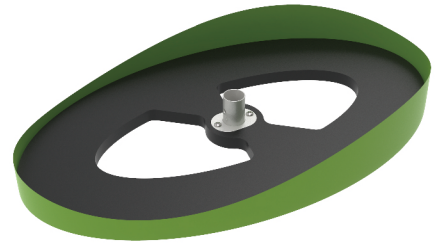
To put the middle of fabric bottom into the middle of bottom panel slot and start the assembly



BOTTOM

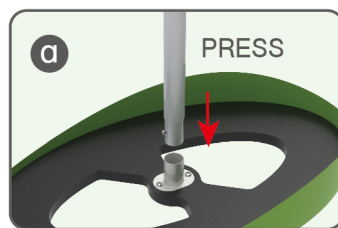


PRESS



STEP 03

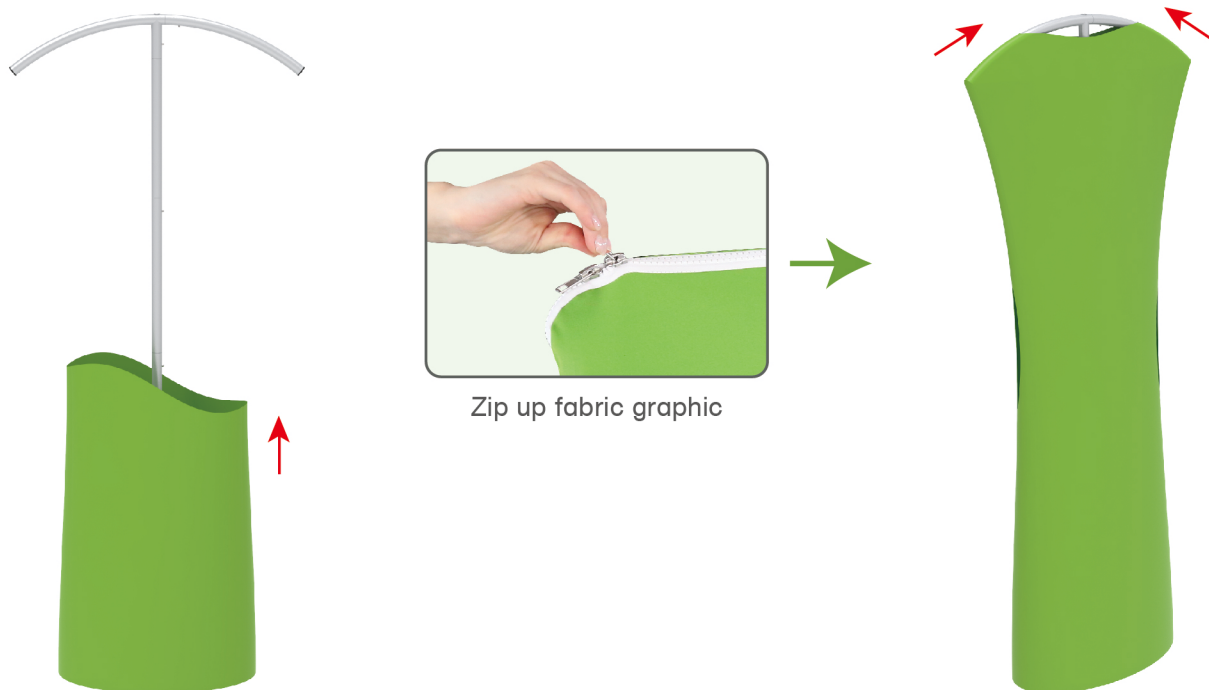
Insert the center pole into the base.



STEPS

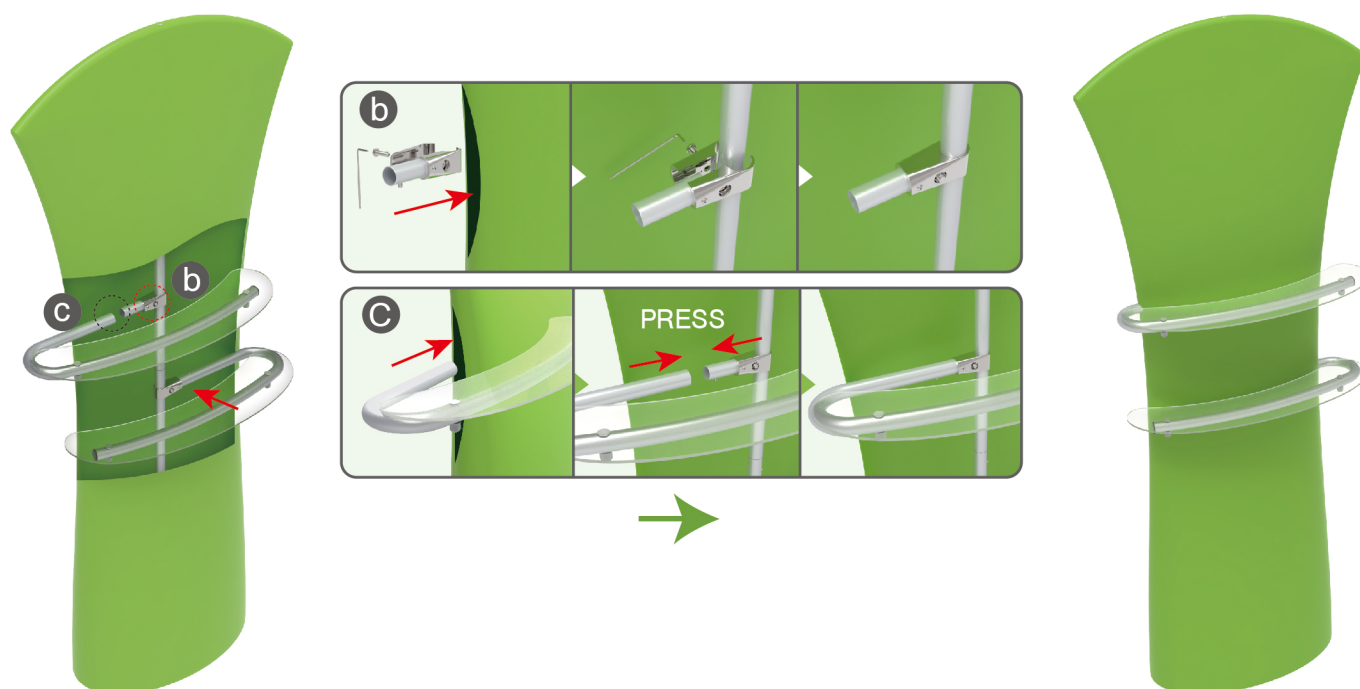
STEP 04

Stretch the cloth cover upward and put it into the top bracket. Pull the zipper on both sides to the middle to expose the hole of the LED light on the top of the bracket



STEP 05

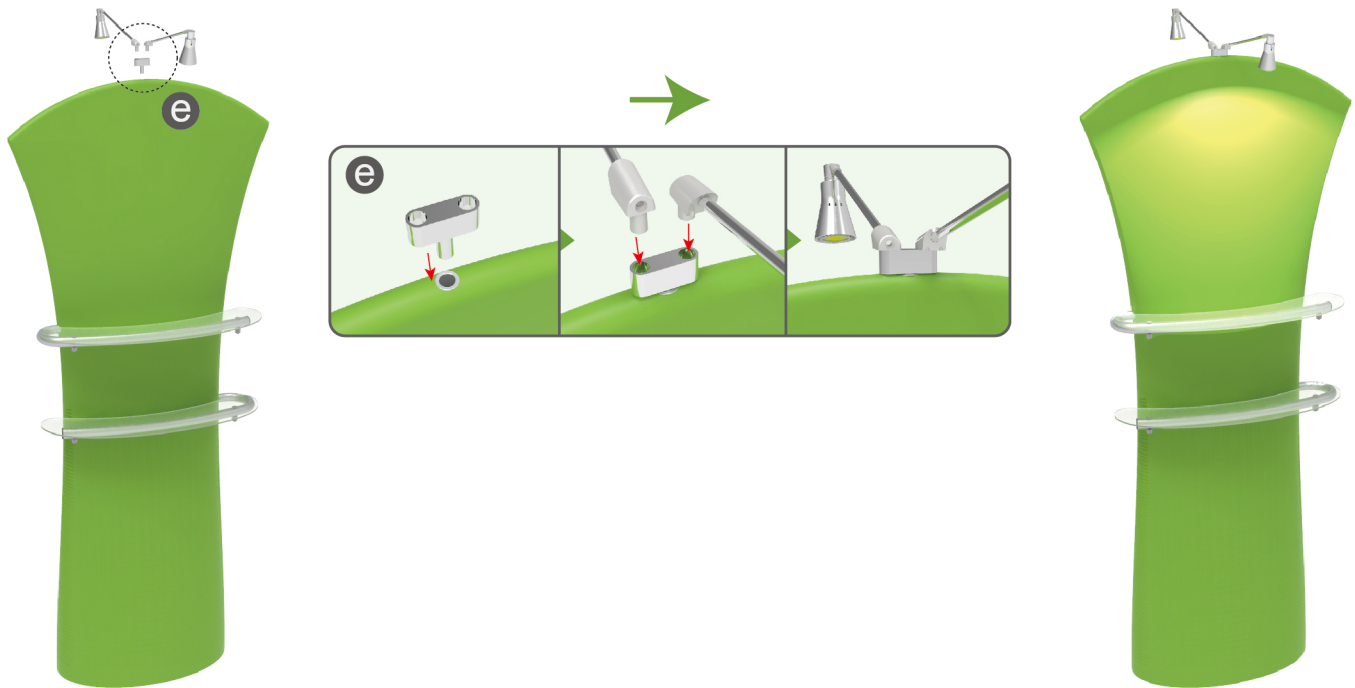
Slide the shelves through the open slits in the graphic and connect them to their support sockets.



STEPS

STEP 06

Place the base of the light fitting in the hole in the middle of the profile.



DT-W-01



DT-W-02



DT-W-03