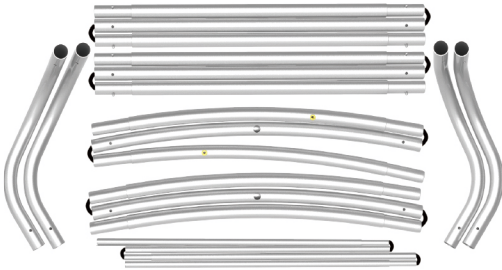
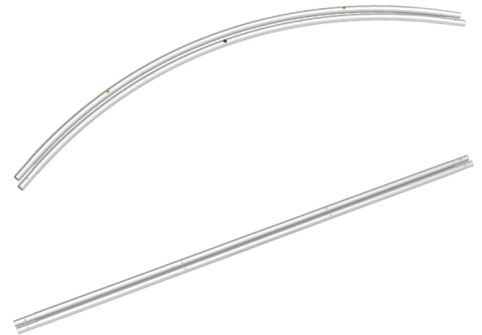
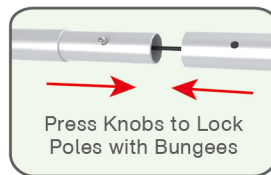
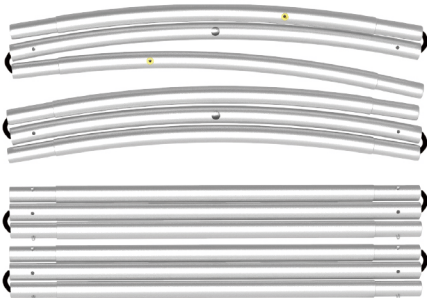
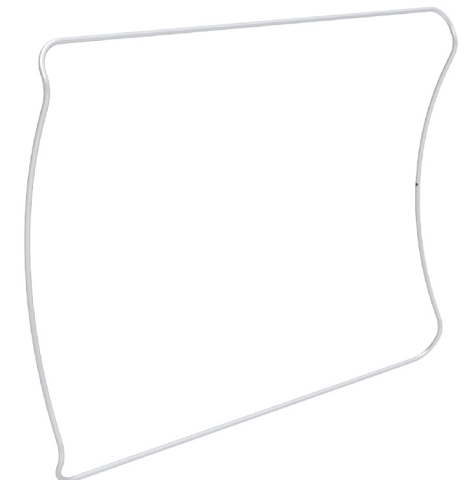
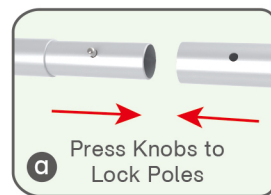
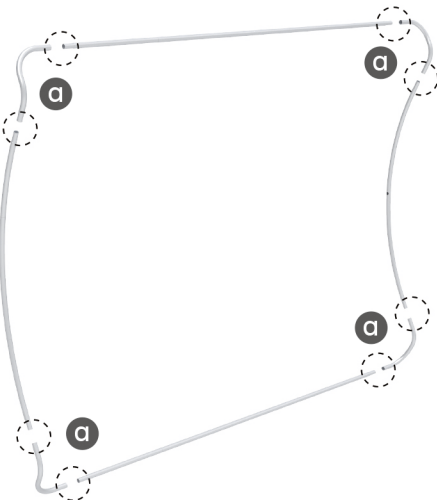
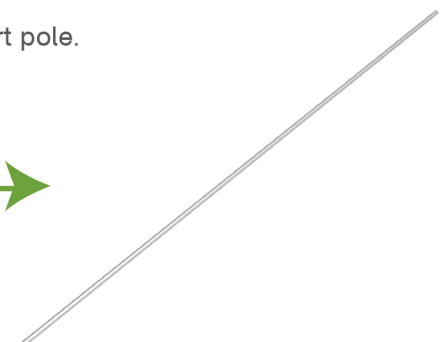
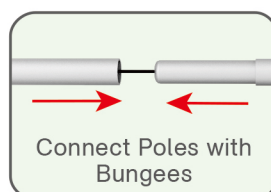


STEPS

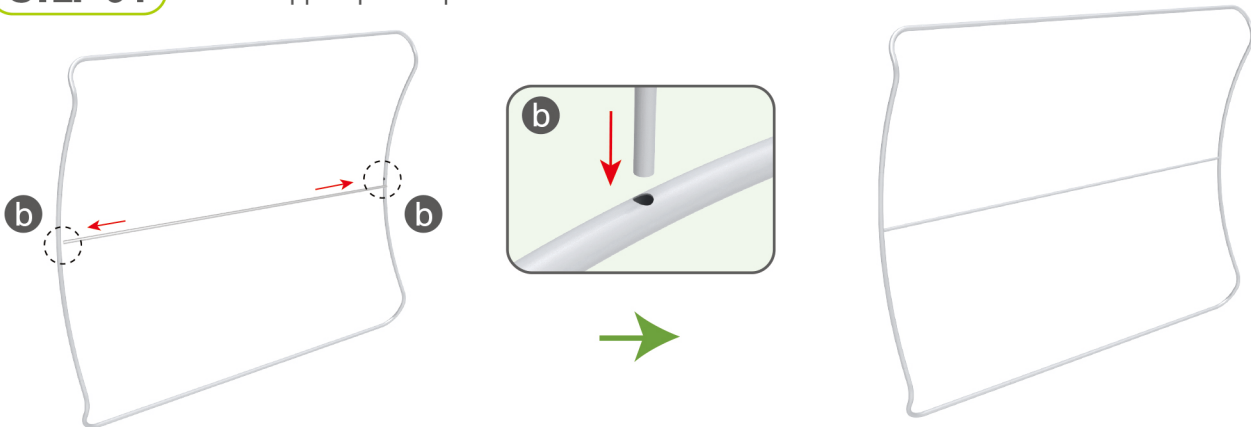
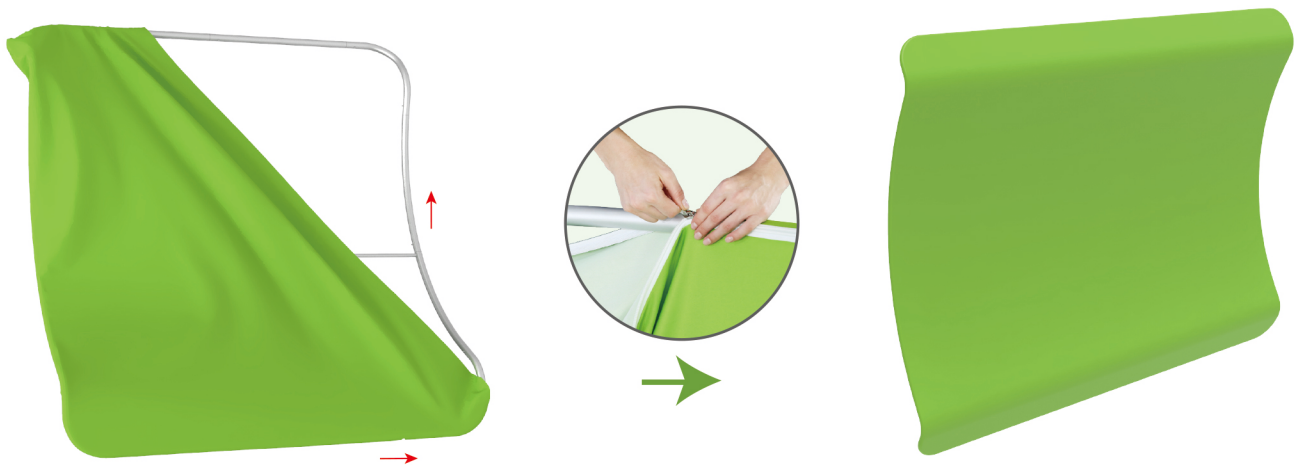
(1) Hardware



(2) Printed Graphic Fabric Banner

**STEP 01** Connect to make long poles according to labelings.**STEP 02** Connect long poles with corner poles according to labelings.**STEP 03** Connect poles with bungees for making middle support pole.

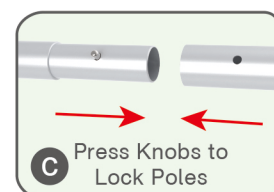
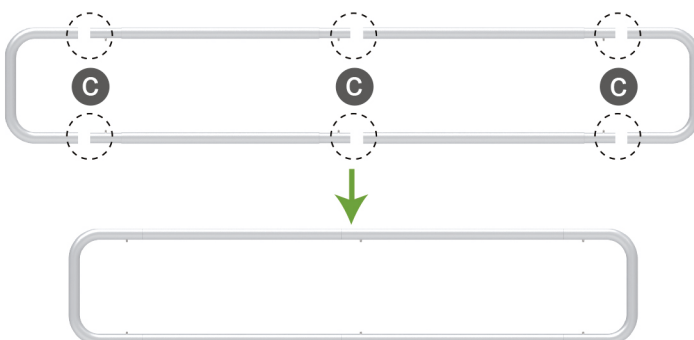
STEPS

STEP 04 Insert support pole in position.**STEP 05** Slide fabric banner on frame from left and zip up at right.

(1) Hardware

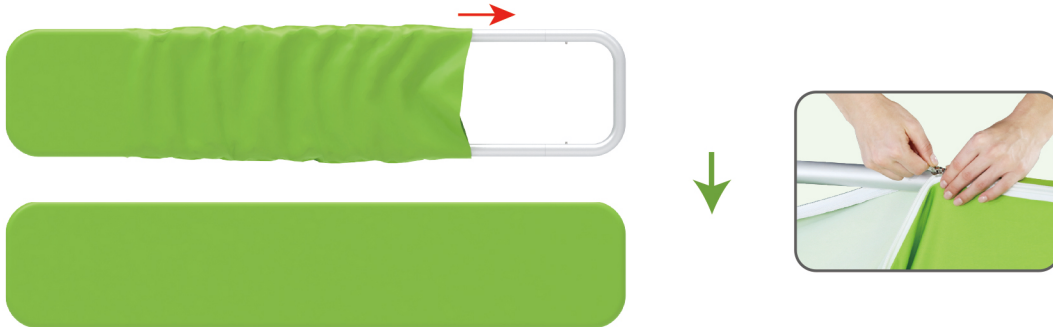


(2) Printed Graphic Fabric Banner

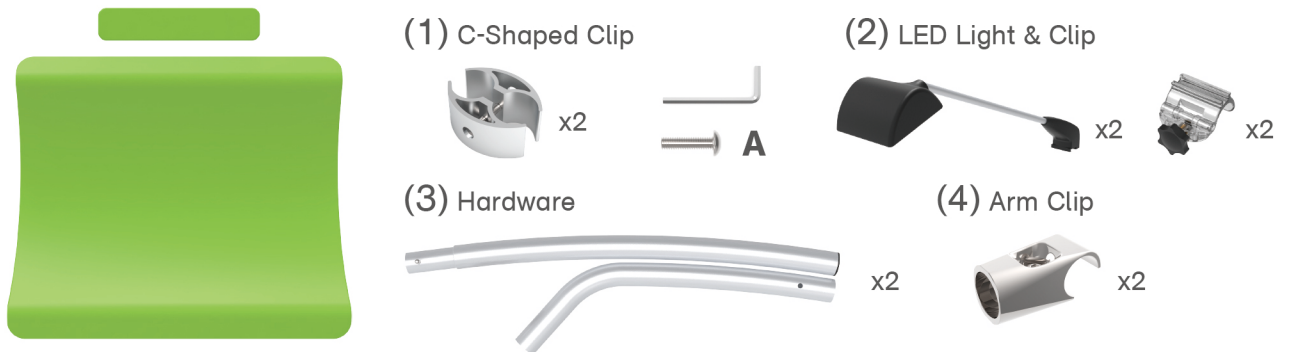
**STEP 01** Connect poles according to labelings.

STEPS

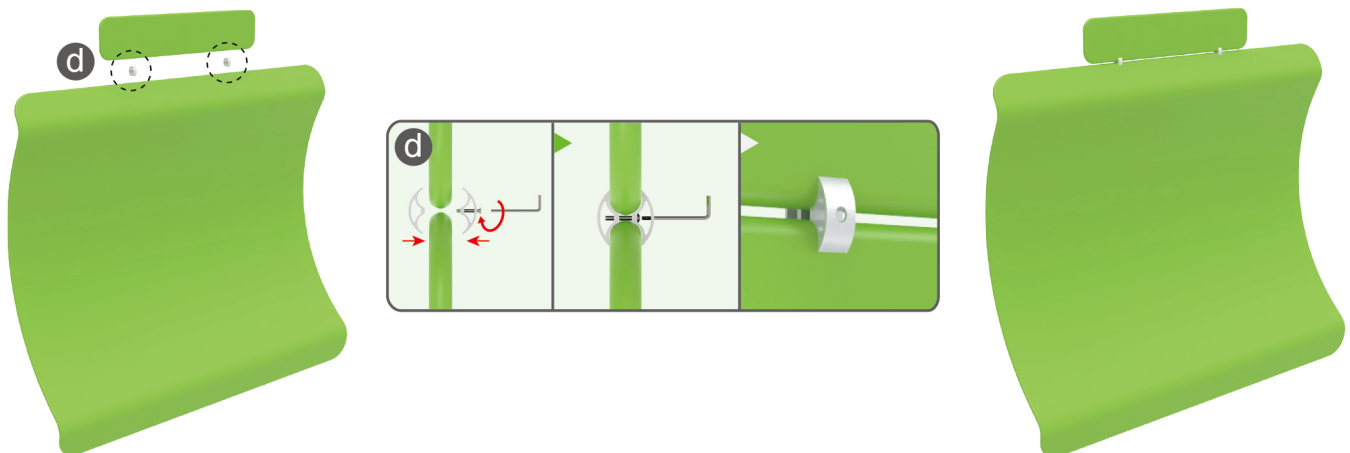
STEP 02 Slide fabric banner on frame from left and zip up at right.



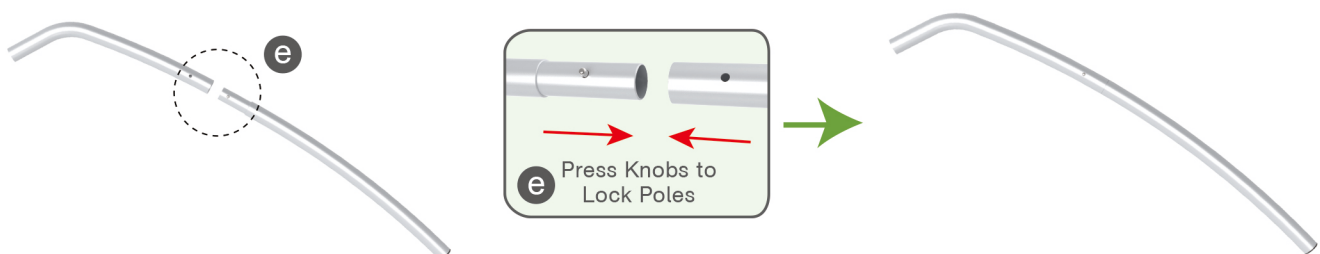
Booth Set Assembly



STEP 01 Interconnect display stands with C-shaped clips.

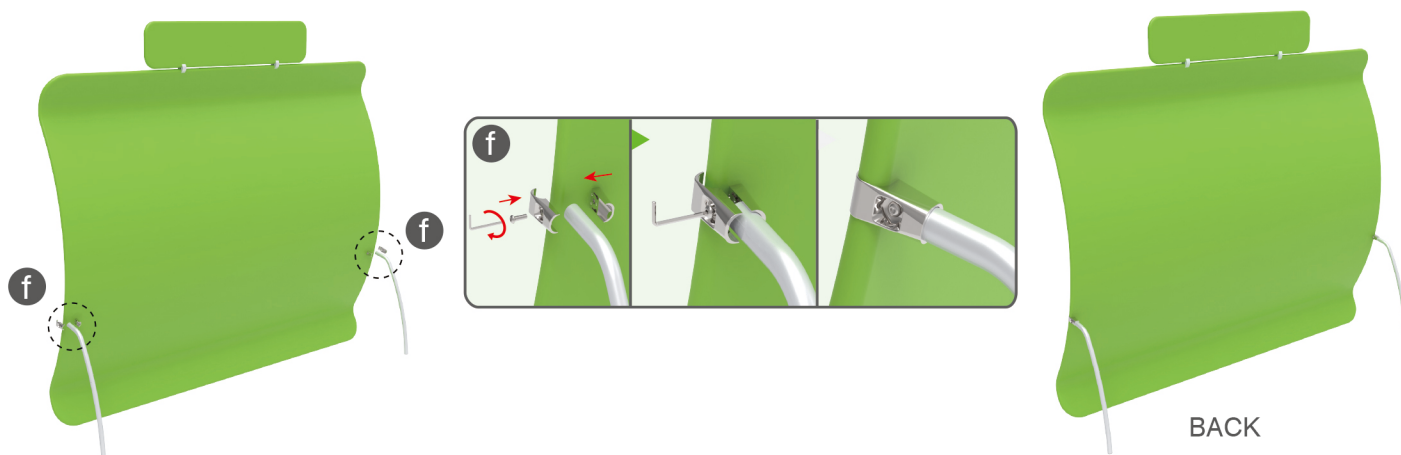


STEP 02 Connect the support poles.

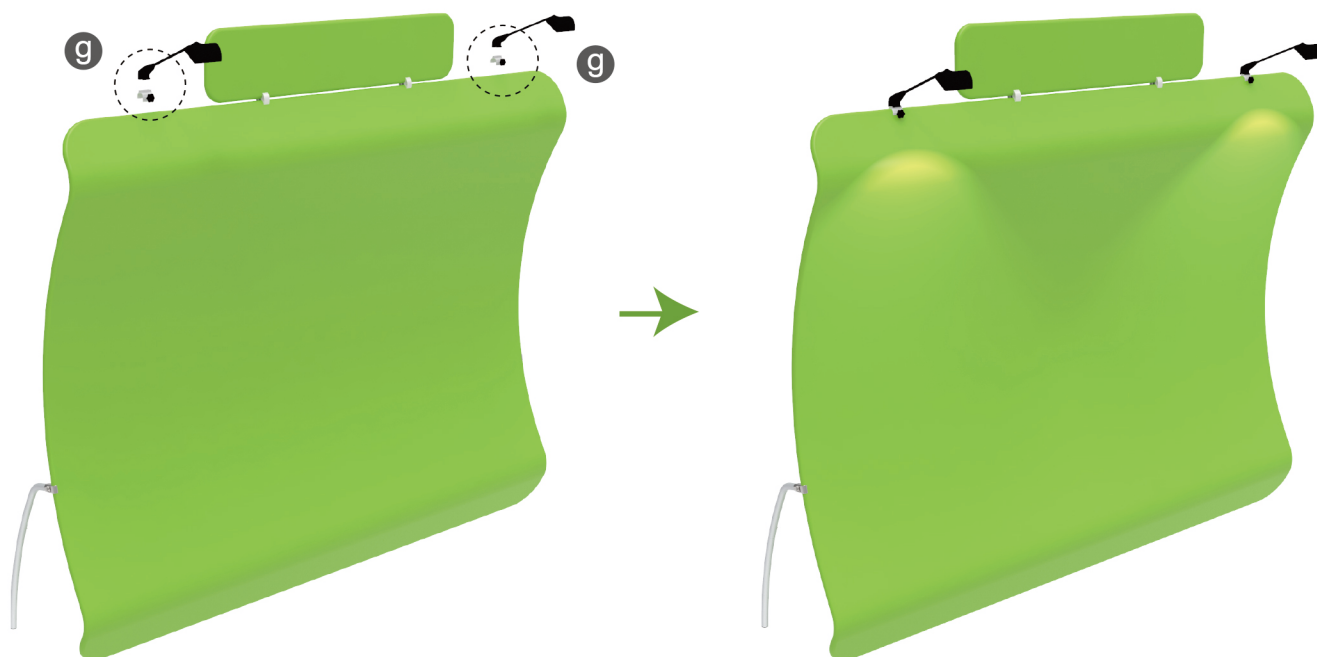
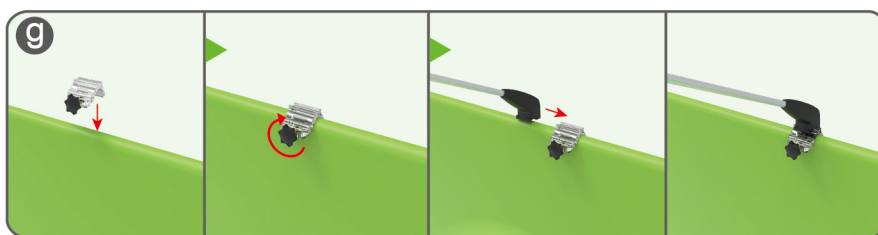


STEPS

STEP 03 Clamp support poles onto display stand from back.



STEP 04 Screw light clips at top of display stands, slide lights onto them and adjust their direction.



10X10FT-BOOTH-H