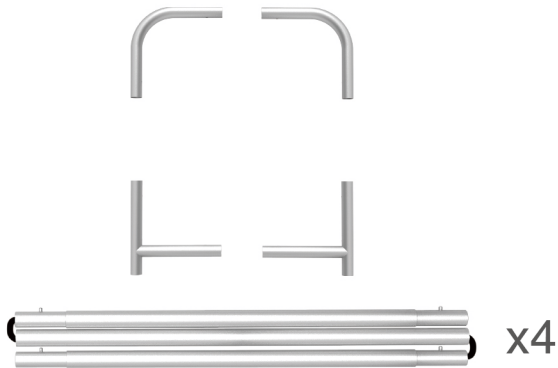


STEPS

(1) Hardware

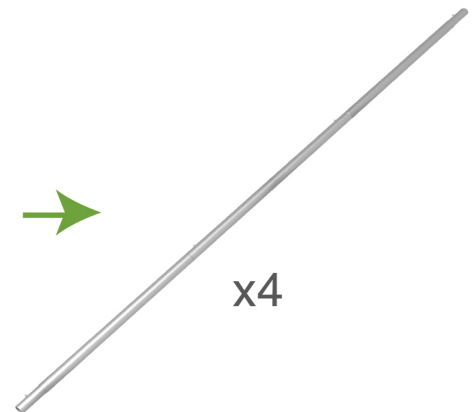
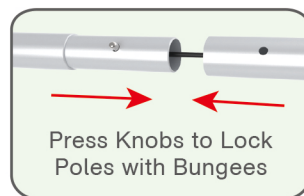
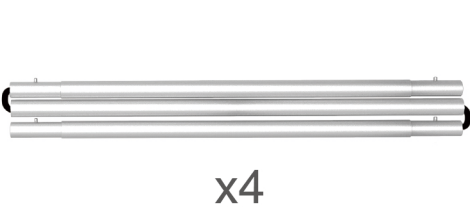


(2) Printed Graphic Fabric Banner



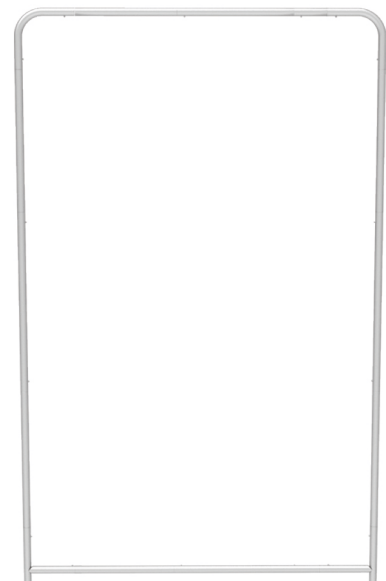
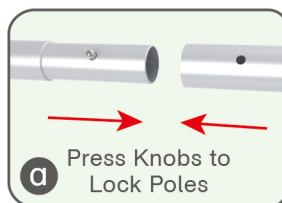
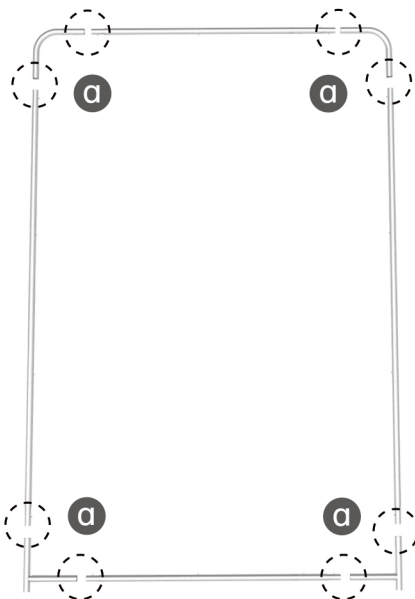
STEP 01

Connect to make long poles according to labelings.



STEP 02

Connect long poles with corner poles according to labelings.



STEPS

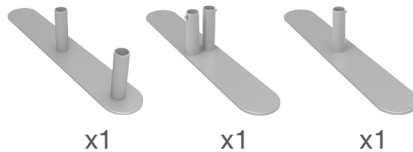
STEP 03 Slide fabric banner on frame from top and zip up at bottom.

Same Steps for Other Display Stands

Booth Set Assembly



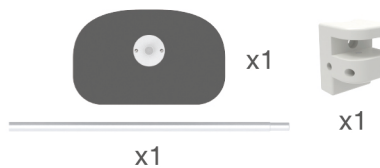
(1) Base



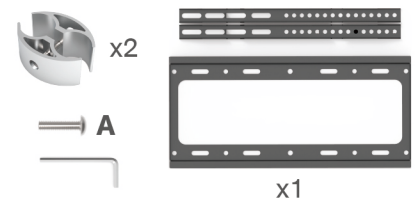
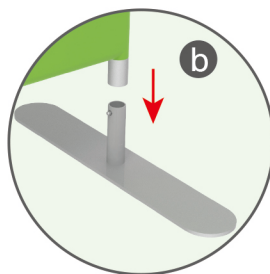
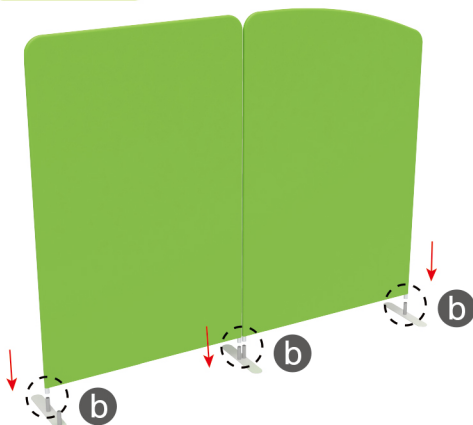
(2) LED Light & Clip



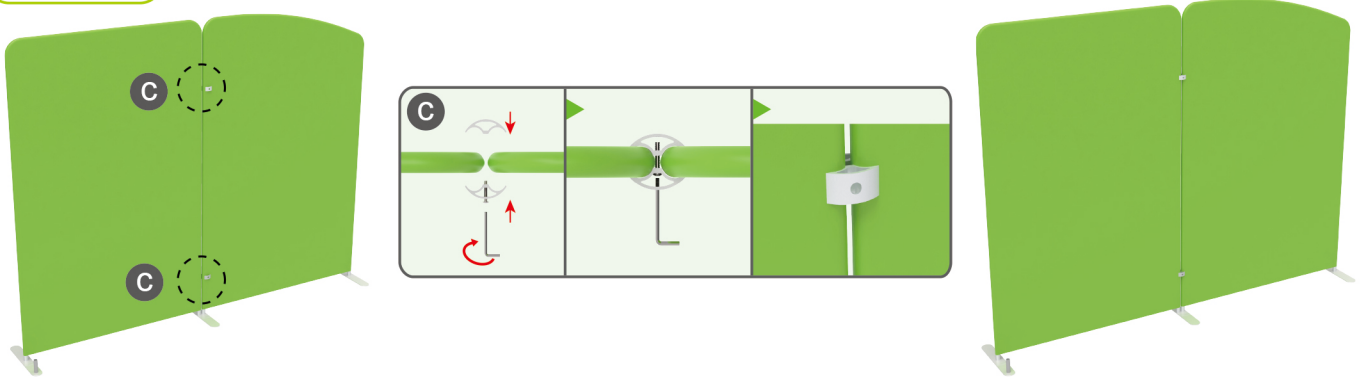
(3) MDF Board Table



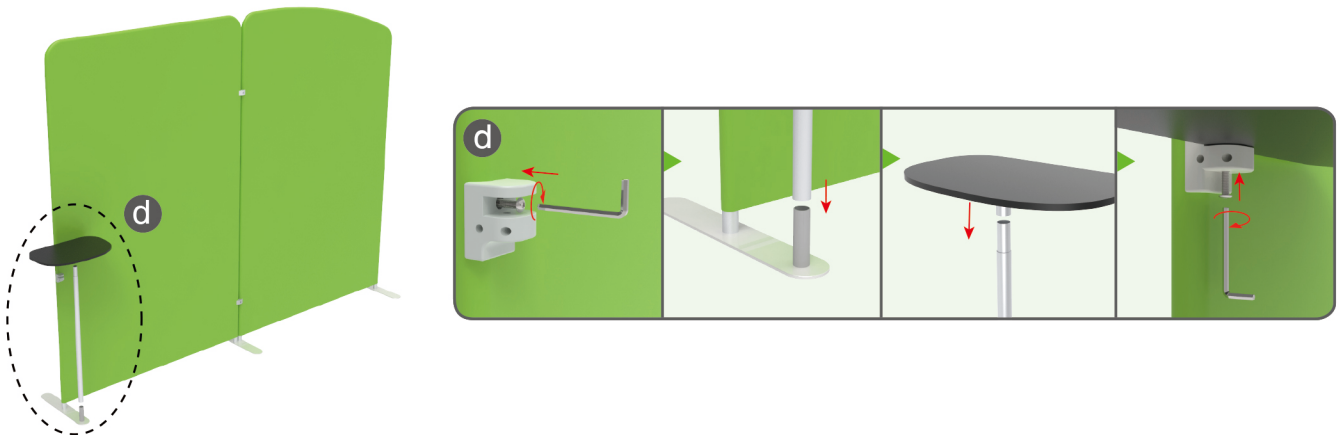
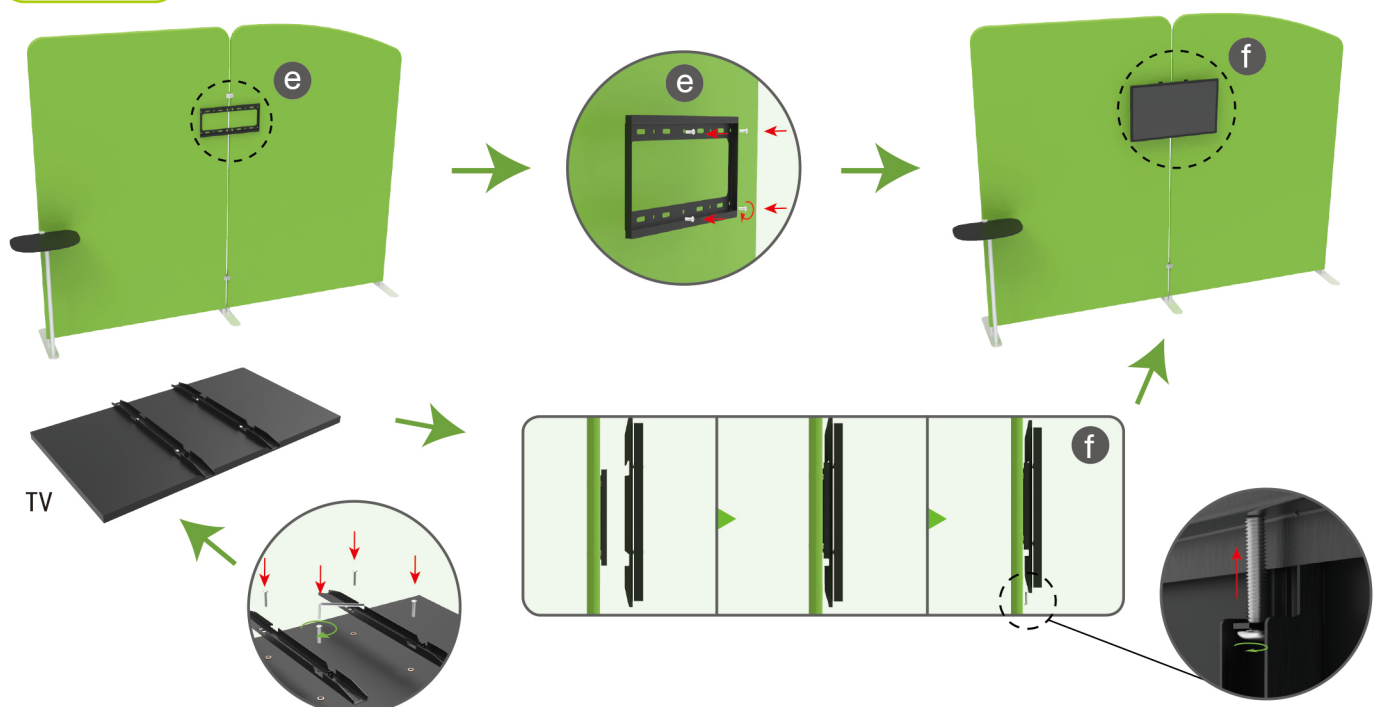
(4) C-Shaped Clip & TV Mount

**STEP 01** Insert display stands onto feet by pressing their knobs.

STEPS

STEP 02 Interconnect display stands with C-shaped clips.**STEP 03**

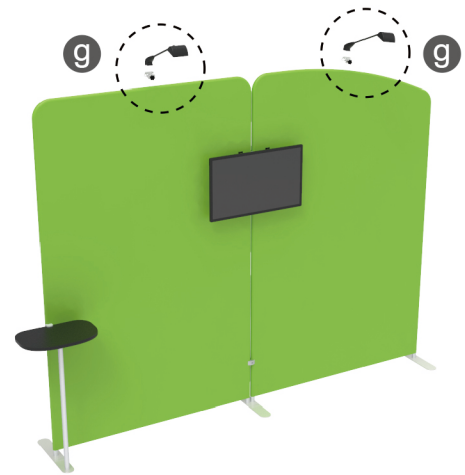
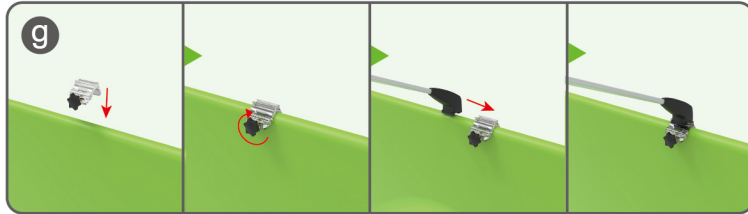
Insert pole into base, screw clamp with hex wrench, place MDF board onto pole & insert into clamp with screw.

**STEP 04** Screw TV mount with hex wrench.

STEPS

STEP 05

Screw light clips at top of display stands, slide lights onto them and adjust their direction.



Same Steps for These Booths



10X10FT-BOOTH-A1



10X10FT-BOOTH-B



10X10FT-BOOTH-03



10X10FT-BOOTH-13